

HANOVER TAVERN

VIRGINIA **rep**

A comic thriller
that's funny...
until it's fatal.



DEATHTRAP

BY **IRA LEVIN**

Historic HANOVER TAVERN

SOUTHERN
CULINARY
EXCELLENCE
IN A
WARM
HISTORIC
SETTING



13181 Hanover Courthouse Rd. Hanover, Virginia 23069 | 804-537-5050 | www.HanoverTavern.org

Learn more about our
Education Programs—
including programs we
can bring to you!



Artistic Director Rick Hammerly
Managing Director Klaus Schuller

VIRGINIA **rep**

DEATHTRAP

By
Ira Levin

DIRECTION
Paul Takács

SCENIC DESIGN
Dasia Gregg

COSTUME DESIGN
Sarah Grady

LIGHTING DESIGN
Steven Koehler

SOUND DESIGN
Jonathan Pratt

FIGHT & INTIMACY DIRECTION
Casey Kaleba[^]

STAGE MANAGEMENT
Hannah Hoffert*

Deathtrap is presented by special arrangement with Dramatists Play Service, Inc., New York

Deathtrap contains some simulated violence - including gunshots and the mention of suicide - and some adult content. Recommended for teens and older.

The play is approximately 2 hours and 20 minutes with a 15 minute intermission.

The videotaping or making of electronic or other audio and/or visual recordings of this production and distributing recordings or streams in any medium, including the internet, is strictly prohibited, a violation of the author(s)'s rights and actionable under United States Copyright Law.

SPECIAL THANKS

Robyn O'Neill

SHOW SPONSOR



SEASON SPONSORS



E. Rhodes and Leona B. Carpenter Foundation



The Reinhardt Foundation
Performing Arts Endowment



* Appearing through an Agreement between Virginia Rep and **Actors' Equity Association**, the Union of Professional Actors and Stage Managers in the United States.



+ Member of **USA, United Scenic Artists'**, local 829



[^] The Director is a member of the **Stage Directors and Choreographers Society**, a national theatrical labor union.

CAST

Nathan Whitmer*	Sidney Bruhl
McLean Fletcher.	Myra Bruhl
Axle Burtress	Clifford Anderson
Donna Marie Miller.	Helga ten Dorp
William Vaughn	Porter Milgrim, U/S Sidney Bruhl
Maggie Ronck.	U/S Myra Bruhl, U/S Helga ten Dorp
Gordon Graham	U/S Clifford Anderson, U/S Porter Milgrim

FOR THIS PRODUCTION

Assistant Stage Manager	Amber Hooper
Fight Captain	Hannah Hoffert*
Carpenters.	Sam Foote, Avery Rose
Scenic Artists	Julie Gallagher, Avery Rose
Electricians	Rylie Vann
Light and Sound Board Operator	Georgia Garrett
Marketing Photography	Aaron Suttten
Marketing Video Footage.	Austin Lewis

VIRGINIA REP STAFF

Artistic Director	Rick Hammerly	Managing Director.	Klaus Schuller
Production Manager	Ginnie Willard	Director of Development	Kiffy Werkheiser
Production Associate	Hannah Hoffert	Development Assoc.	Dr. Brandon LaReau
Technical Directors	Thomas Hawfield, Hans Paul	Director of Marketing & Communications	Amy Wolf
General Technicians	Becka Russo, Jacob Bingaman	Graphic Designer	Tiffany Smith
Carpenter	Shawn Goodman	Internet Srvcs. Manager	Jessica Printz
Scenic Charge Artist	Amy Gethins Sullivan	Daugherty	
Props Supervisor	Mercedes Schaum	Group Sales Manager	Kylee Márquez-Downie
Production Electrician.	Kacey Yachuw	Box Office Manager	Joel Vella
Audio Visual Supervisor	Jonathan Pratt	Asst. Box Office Manager	Shannon Frazier
Costume Shop Manager	Patricia Austin	Box Office Associates	Erin Dabrowski, Novella Edwards, Kim Hoyle, Erin Sears
Cutter/Draper.	Marcia Miller Hailey	Front of House Manager	Janelle Cottman
Facilities Manager.	Bruce Rennie	Accounting and Finance	Sandbox
Custodial Services.	Tim Bethea	External Auditor	Keiter
Education Manager	Vivian Schwartz	Manager of Community & Board Relations	Jessi Johnson Peterson
Education Assistant	Gracie Berneche	General Manager	Lisa Kotula

Use the QR code to read Cast & Creative Full Bios ►



FOLLOW US ONLINE!



VAREPTHEATRE



@VAREPTHEATRE

VIRGINIA rep

A Night With **VIRGINIA REP**

SAVE THE DATE

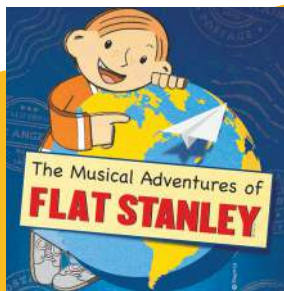
ANNUAL GALA

JANUARY 31, 2026

JOIN US FOR THE
2025/26
SEASON

VIRGINIA rep

A Pulitzer Prize-winning drama, a classic Whodunnit, a side-splitting comedic romp, an enduring family favorite, and the regional premiere of a beloved Broadway musical—the 2025/2026 Season at Virginia Rep is certain to thrill and delight Richmond audiences!

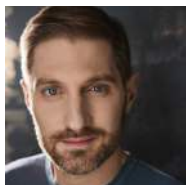


Subscribe & save today!

Call our box office at 804-282-2620
or visit us on the web! ►



COMPANY BIOS



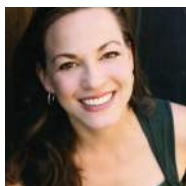
Nathan Whitmer, he/him, (Sidney Bruhl) is making his Hanover Tavern debut! Richmond Theatre: *Murder on the Orient Express* (VA Rep). Other Theatre: *The Heiress* (Arena Stage), *People, Places and Things* (Studio Theatre), *Candida* (Washington Stage Guild). Off-Broadway: *A.A. Milne's The Ugly Duckling* (Marvell Repertory Theatre). Regional: The Old Globe, Cincinnati Playhouse, Virginia Theatre Festival, Texas Shakespeare Festival, Roxy Regional Theatre, Fairbanks Shakespeare, and over 25 roles at the Barter Theatre where Nathan was a resident company member. Television: *George Washington's Secret Love*, *Mystery at Jamestown* (Smithsonian Channel). MFA - The University of San Diego Shiley Graduate Acting Program; BFA - Ohio University. Love to Virginia Rep veteran Emelie Thompson and our three fantastic kids. IG: @actornate



McLean Fletcher, she/her, (Myra Bruhl) is excited to be back at Virginia Rep where some of her previous credits include Greta Ohlsson in *Murder on the Orient Express*, Annie Wilkes U/S in *Misery*, Betsy/Lindsey in *Clybourne Park*, Beth in *A Lie of the Mind*, and Jill in *Equus* in partnership with Cadence Theatre, Mabry in *The Human Terrain* at Fifth Wall (RTCC for Best Leading Actress), and many others at Richmond Shakespeare, Firehouse and TheatreLAB. She has also performed with Studio Theatre, Constellation Theatre, Synetic Theatre, Folger Shakespeare, Shakespeare Theatre Company, The Kennedy Center, and others. McLean earned her MFA in classical theatre at The George Washington University.



Axle Burtress (Clifford Anderson) is happy to return to Hanover Tavern with such suspense! Axle has spent over 20 years performing, directing, and creating fight choreography. When he isn't lost in his art, he is lost in a good book. Recent stage credits: *Long Days Journey Into Night* (Jaime Tyrone) at Cadence Theatre and *Gaslight* (Mr. Manningham) at Swift Creek Mill (RTCC Winner - Best Supporting Actor: Play). Recent directing credits: 2022 revival of *Christmas on the Rocks* at Richmond Triangle Players. Recent Fight Choreography: *Passover* (RTCC Nominee - Best Play) and *Constellations* at Yes, And! Theatre. Axle would like to thank his wife, Irene, their dog Lykota, and all his friends and family for their support.



Donna Marie Miller, she/her, (Helga ten Dorp) most recently performed in Triangle Players' *5 Lesbians Eating a Quiche*. Previous Va Rep productions include: *The Game's Afoot*, *Miracle on South Division Street*, *Golden Goose*, and both *Charitable Sisterhoods*. Other local productions include: FirehouseTheatre's: *Roman A Clef*, *Animal Control*, *Invalid*, and *Food Clothing Shelter* (2018 RTCC's Best Supporting Actress); Swift Creek Mill Theatre's *Sweet Delilah*, *Swim Club*, *Miracle on South Division Street*, and *Mystery of Edwin Drood*; Yes And's *Placebo*; Quill Theatre's *Merry Wives of Windsor* and *Much Ado About Nothing*; TheatreLAB's *Admissions*, and CAT's *Enchanted April* and *Private Lives*.



William Vaughn, he/him, (Porter Milgrim, U/S Sidney Bruhl) makes his triumphant return to Hanover Tavern in another whodunnit! It's only possible thanks to the love/support of his friends, his family, Chelsea, Penny, and Baxter. Previous credits include-- huh, did you hear that? Came from over there. Probably nothing but... Anyways, William's previous-- there it is again! You heard it that time, right?? Kind of a crunching and a sharp inhale? William's trying not to get freaked out, but with his evil twin brother being released from prison recently he's kind of on OMG LOOK OUT BEHIND YOU!!!

COMPANY BIOS



Maggie Ronck, she/her, (U/S Myra Bruhl, U/S Helga ten Dorp) is thrilled to be returning to Hanover Tavern where she previously understudied for VA Rep's *On Air*. Select credits include: Jim Henson's *Dinosaur Train Live* (national tour), *Clifford the Big Red Dog* (national tour), Reno Sweeney in *Anything Goes* (Summerstage at Leonia), *Into the Woods* (The Vineyard), *Endangered, An Eco Musical!* (Davenport Theatre), *Night Witches-A New Play* (Dixon Place, Circus Warehouse and The Hangar). She holds a BA in Theatre and Drama from Indiana University and trained at HB Studios in New York. Much love to her husband Matt!



Gordon Graham, he/him, (U/S Clifford Anderson, U/S Porter Milgrim) Gordon is thrilled to be a part of this production. You may have seen him this past summer as Demetrius in *A Midsummer Night's Dream* (Richmond Shakespeare) or your family may have seen him as the swing/understudy in *Don't Let The Pigeon Drive the Bus!* (VA Rep). Other past credits include Don John in *Much Ado About Nothing* (Richmond Shakespeare), Sam in *Grace For President* (VA Rep), Bull Connors in *I Have A Dream* (VA Rep Children's Tour) and the Wolf in *The Three Little Pigs* (VA Rep Children's Tour). Gordon would like to thank Paul and Rick for the opportunity to be a part of this production, his friends and family for always supporting him, Naomi and, of course, his Mama.

Paul Takács, he/him, (Director) is a Richmond, VA based director and most recently directed the world premiere of Andrew Gall's play, *Burial Tax* for Firehouse Theatre. Previous credits for Virginia Repertory Theatre are: Mo Willems and Deborah Wicks La Puma's *Don't Let The Pigeon Drive The Bus!*, Roald Dahl's *Charlie & the Chocolate Factory* and Ken Ludwig's *Baskerville: A Sherlock Holmes Mystery*. He was the founding Artistic Director of The Shop in New York City, where he directed the New York premieres of David Harrower's *Knives in Hens* for The Shop at 59E59 Theaters and Philip Ridley's *Dark Vanilla Jungle* at HERE Arts Center. Other credits for The Shop include the U.S. premieres of Jon Fosse's *I Am The Wind* translated by Simon Stephens and Philip Ridley's *Tender Napalm*, both at 59E59 Theaters. Other work: The world premiere of David Pinski's Yiddish play *Professor Brenner* and the premiere of a new translation of Peretz Hirshbein's Yiddish play *Carcass* both for the New Worlds Theatre Project at HERE Arts Center, NYC. He holds a BA in Drama from St. Mary's College of Maryland and an MFA in Directing from The New School for Drama. Paul is currently Head of Upper School Theatre at St. Christopher's School in Richmond, VA and Artistic Director of Amperсанд, the joint theatre company of St. Christopher's and St. Catherine's Schools. www.paultakacsdirector.com

Dasia Gregg (Scenic Design) is a scenic and projection designer based in Richmond, VA. Some recent and favorite credits include Scenic and Projection Designer for *Ride the Cyclone* (SPARC), Projection Designer for *Misery* (Virginia Repertory Theatre), Animator for *The Dragon King's Daughter* (The Kennedy Center), and Assoc. Projection Designer for *Murder on the Orient Express* (Flat Rock Playhouse). Dasia graduated from Virginia Commonwealth University School of the Arts in 2018 with a BFA in Theatre and concentration in Scenic Design.

Sarah Grady (Costume Designer) has been designing costumes for Richmond audiences since 2004. Recent designs include *Waitress*, *Dial M for Murder & Moriarty* (Virginia Rep) and *True West* (Cadence). She worked as a Costumer on the Pharrell Williams movie "Atlantis", Apple TV's *Swagger* and AMC's *The Walking Dead: World Beyond*. She was the Assistant Costume Director for Virginia Repertory Theatre for 17 years. Favorite designs include *Sister Act*, *West Side Story* (RTCC Award for Best Costume Design), *In the Heights*, *Dreamgirls* (RTCC Award for Best Costume Design), *Junie B. Jones*, *The Music Man*, *Spring Awakening*, *The Sound of Music* (Virginia Rep); *Fun Home*, *Violet*, *The Mountaintop*, *Caroline or Change*, and *Appropriate* (Cadence). For three lucky summers, Sarah traveled to Roma, Italy, to work with the Operafestival di Roma, where she coordinated the costumes for *The Magic Flute*, *Suor Angelica*, *The Marriage of Figaro*, and *Die Fledermaus*. She has also worked at VCU Opera, TheatreVirginia and Williamstown Theatre Festival.

COMPANY BIOS

Steven Koehler, he/him, (Lighting Designer) is happy to return to the Tavern. Previous Virginia Rep credits include *Dial M for Murder*, *Moriarty*, *Baskerville*, *Honky Tonk Laundry*, *Gross Indecency*, *the Three Trials of Oscar Wilde*, *The Syringa Tree*, *A Doll's House Part 2*, *Pipeline*, and many more. Additional design work through the Midwest and in Idaho, *The Syringa Tree*, *Good People*, *Chicago*, *Grey Gardens*. Steven is also the managing director of Swift Creek Mill Theatre and is married to local musician, Shellie Johnson, and proud parent to three mostly grown children.

Jonathan Pratt (Sound Design) Jonathan is thrilled to be designing again at Virginia Rep where some of his recent designs include *Waitress*, *Dial M for Murder*, Ken Ludwig's *Moriarty*, *Baskerville: A Sherlock Holmes Mystery*, *Satchmo at the Waldorf*, *On Air*, *9 to 5: The Musical* and *Charlie and the Chocolate Factory*, the latter three winning the RTCC Award for Outstanding Sound Design of a Musical. At the Rep Family Theatre, Jonathan's favorite shows designed include *Don't Let the Pigeon Drive the Bus: The Musical!*, *The Santa Clues* and *Grace for President*. Other favorite local design credits include: *The Scarlet Pimpernel* (William and Mary), *Cry It Out* (Yes, And!) and *Sunset Baby* (Blk Theatre Alliance for Youth). Jonathan has also designed over 40 productions for Camelot Theatre in Talent, Oregon. Favorites include *Catch Me If You Can*, *Matilda the Musical*, *Almost, Maine*, and *Something Rotten*, and wrote and directed musical tribute shows to Stephen Sondheim and the music of Motown.

Casey Kaleba, he/him, (Fight & Intimacy Direction) has arranged violence and intimacy for nearly 600 productions, most recently at Round House Theatre (*Rules for Living*), Wolf Trap Opera (*Carmen*), and Olney Theatre Center (*Red Pitch*). He has worked throughout the country, including Northern Stage, Washington National Opera, Ford's Theatre, Signature Theatre, Spoleto Festival USA, Guthrie Theatre, and as an audition choreographer for Marvel Universe Live. A Fight Director and Certified Teacher with the Society of American Fight Directors, Casey holds a PhD in Theatre History from the University of Maryland - College Park. For more of his work go to www.ToothAndClawCombat.com

Hannah Hoffert, she/her, (Stage Manager) is a proud alumnus of Carnegie Mellon University, receiving her B.S. ('16) and M.S. ('17) in Mechanical Engineering. This is her fifth season with Virginia Rep, and some of her previous credits include *Murder on the Orient Express*, *Dial M for Murder*, Ken Ludwig's *Moriarty*, *Beautiful: The Carole King Musical*, *Beehive: The 60's Musical*, *Mamma Mia!*, *Chicken & Biscuits*, *Elephant & Piggie*, *Naked Mole Rat Gets Dressed* and *Grace for President*. In addition to stage management, she works full-time at Virginia Rep as a Production Associate. Hannah wouldn't be here today without her medical alert service dog, Clara, and her late service dog, Olive, who accompanied her to every rehearsal and performance in her professional career. To learn more about life changing service dogs like Clara and Olive, please visit www.servicedogsva.org.

Amber Hooper, she/her, (Assistant Stage Manager) is thrilled to be working at the Hanover Tavern once again. She has Assistant Stage Managed with Virginia Rep at the Hanover Tavern for a few years now, in shows such as *Steel Magnolias*; *Honky Tonk Laundry*; *Baskerville*; *On Air*; *Moriarty*; and *Dial M for Murder*. She has also worked backstage at the November Theater on shows such as *Misery* and *Waitress*, but she prefers working at the Hanover Tavern due to its intimate space, delicious food, and friendly staff. Amber graduated from Eastern Mennonite University in 2020 with a degree in Theatre. In her free time, Amber enjoys crocheting, cosplaying, and playing video games with her wonderful fiancé, Johnny.

LEADERSHIP



RICK HAMMERLY *Artistic Director*

Rick has worked as an award-winning actor, director, filmmaker, and arts manager with more than three decades of

experience, formerly based in Washington, DC.

Since relocating to Richmond and joining the leadership team at Virginia Repertory Theatre, he has directed *Beautiful: The Carole King Musical* (for which he received an RTCC Award for Best Direction of a Musical), *Murder on the Orient Express*, *Waitress*, *Misery*, *Martha Mitchell Calling*, *After December*, and most recently adapted and directed VA Rep's *A Christmas Carol*. In addition, he received a 2018 Helen Hayes Award for his direction of *Lela & Co.* and a 2020 Helen Hayes Award nomination for his direction of *Agnes of God*, both for Factory 449. Other directing credits include *Dizzy Miss Lizzie's Roadside Revue's The Brontes* (New York Musical Theatre Festival), *Reykjavik* (Rorschach Theatre), *Emilie: La Marquise du Châtelet Defends Her Life Tonight* (WSC Avant Bard), *Driving Miss Daisy* featuring Karen Grassle (Riverside Center for the Performing Arts), *Junie B. Jones Is Not a Crook* (Adventure Theatre MTC), *Dead Man Walking* (American University), and *Closet Land* (Factory 449).



KLAUS SCHULLER *Managing Director*

Schuller boasts more than 20 years of experience managing the operations of complex, multi-venue and multi-disciplinary

organizations and has produced and presented live, touring and televised events that included collaborations with The Kennedy Center and the Toronto Symphony Orchestra, among others.

Known as much for his collaborative nature as his creativity, he has worked on various projects with celebrities such as Martin Short, Eugene Levy, Tina Fey, Catherine O'Hara, Bob Martin, and Dave Thomas.

Most recently, Schuller served as the executive director and producer for Randolph Entertainment, which presented Teatro

As an actor, he has performed Off-Broadway and regionally, receiving a Helen Hayes Award for his turn as Hedwig in Signature Theatre's production of *Hedwig and the Angry Inch*, as well as nominations for his work in *Angels in America* (Signature Theatre), *Me and Jezebel* (MetroStage) and *Oliver!* (Adventure Theatre MTC). For ten years, he played Mr. Fezziwig in Ford's Theatre's annual production of *A Christmas Carol* and was most recently seen as Miss Tracy Mills in Round House Theatre's *The Legend of Georgia McBride*.

He is a founder and Producing Artistic Director of Factory 449, the recipient of multiple Helen Hayes Awards, including the John Aniello Award for Outstanding Emerging Theatre Company, and the Executive Director of the Washington Area Performing Arts Video Archive (WAPAVA). For Idle Rich Productions, he wrote, directed, and produced *signage*, his debut film, which screened in over 60 film festivals world wide, garnered 5 festival awards, and was purchased by MTV and programmed on their LOGO channel.

Rick is a member of the Stage Directors and Choreographers Society (SDC) and Actors' Equity Association (AEA). He received a B.A. in Theatre from the University of Virginia, an M.A. in Film & Video Production from American University, and has completed the coursework for an M.A. in Arts Management, also from AU.

ZinZanni and Cabaret ZaZou in partnership with Broadway in Chicago, from 2018-23. He led the planning, construction and launch of a unique new theater in a "forgotten" space that was rediscovered during a hotel renovation that revealed the original grand space inside the historic 1926 building in the Chicago Loop.

Schuller also served as executive director and producer for The Second City Canada from 2005-17, where he supervised the planning and construction of its Mercer Street home in Toronto and planned or led the construction of venues in Toronto, Cleveland and Las Vegas.

"Virginia Rep's exceptional reputation and the diversity and quality of its offerings immediately appealed to me," Schuller said. "I am humbled to have the opportunity to contribute to the incredible legacy the organization has built over the past 70-plus years and its impact on the arts community in Richmond, Central Virginia and beyond."

Inclusion, Diversity, Equity, and Access (IDEA) Accountability Statement

Since 2020, Virginia Repertory Theatre has been intentional in our efforts to become an artistic home that is multicultural in representation and where everyone is welcomed and included. We still have much work to do and continue to commit to doing our part to dismantle systems of oppression, not only in the theatre community, but everywhere it is present.

Our Commitment

We commit to examining our organizational culture to assure that we are an artistic home centered on anti-racist and anti-oppression practices. We will actively pursue and embrace inclusion, diversity, equity, and access in all aspects of art, business, and life in our community.

We will intentionally make space for the diverse voices of our board, staff, artists, and theatre community.

We will seek to include and reflect on the varied experiences of our community to ensure everyone has access to live theatre that entertains, inspires, and challenges. We will be mindful of Black, Indigenous, and Persons of Color (BIPOC); Asian American Pacific Islander (AAPI); People with Disabilities, Lesbian, Gay, Bisexual, Transgender, Queer+ (LGBTQ+), and other marginalized communities in our efforts and we will actively seek to learn from them.

We make these commitments to the theatre community and to the community at large and we ask that they take this journey with us and hold us accountable.

We will commit to implement our action plan so that
we can honestly say:

At Virginia Repertory Theatre, everyone has a voice.

At our theatre, everyone is welcomed and included.

*Please refer to the Social Justice section of our website for
our full Anti-Racism Commitment & Accountability Statement
and our history in support of racial equity.*

OUR MISSION

Our Mission: To entertain, challenge, and uplift our communities through the power of live theatre. To that end, we seek national caliber excellence in the arts, education, and community health and leadership.

BOARD OF DIRECTORS

Vivian White

Chair, Acting Treasurer

Jason De La Cruz

Vice Chair

Martha Quinn

Immediate Past Chair

Kendall B. Neely

IDEA Officer

BOARD MEMBERS

Jevata Herman Bagby

Susie Bogese

Corey S. Booker

Benjamin Dessart

Trish Forman

Barbara M. Glenn, PhD

Charmica Epps Harris

Lt Gov-Elect Ghazala Hashmi, PhD

Nathan Hatfield

EmJay Johnson

Kathy Messick

Thomas Millisor

Alana M. Ritenour

Rachel Snead

Katie Studer

Edward T. White

VIRGINIA REPERTORY THEATRE

114 West Broad Street; Richmond, VA 23220

Administration: 804-783-1688 Box Office: 804-282-2620

VA-REP.ORG



THANK YOU, DONORS!

Thank you to the many generous donors who power Virginia Rep's mission. Below are our donors from last fiscal year to this fiscal year-to-date. If you would like to join these supporters by donating to our nonprofit theatre, please visit www.virginiarep.org to **DONATE NOW** or mail your contribution check to Virginia Repertory Theatre, 114 West Broad Street, Richmond, VA 23220. Corrections to this list or questions about donating should be directed to our Development Office at (804) 783-1688 x1263.

INDIVIDUAL CONTRIBUTORS

Angels (\$25,000+)

Ally and Jay Ashcraft
Mikey Bogese
Susie Bogese
George and Cal Jennison
Perry and Meredith Miles
Steve and Kathie Markel
Paul and Nancy Springman
J. Edward and Katie Ukrop
James E. and Bobbie Ukrop
Mr. Edward Villanueva

Producers (\$10,000-\$24,999)

Ellen Brown
Brian and Liz Haney
Jeff Gallagher and Catherine Howard
Bruce and Janet Kay
Dan and Alice Lynch
Steven and Marci Linas
Susan Ivie Rickman

Directors (\$5,000-\$9,999)

Anonymous
Frazier and Brad Armstrong
Rawls and Julie Bolton
Ted and Laura Lee Chandler
Kelly Chopus
Jason and Paige De La Cruz
Benjamin Dessart
Terry and Mark Dozier
Stephen and Cheryl Goddard
Elfriede Gould
Lynn Greer
Daniel and Cynthia Kelley
Katherine Kelly
Ken and Terry Murphy
Mr. Philip W. Klaus Jr
Kathy L. Messick
David Morgan
Carolyn and Bill Paulette
Mrs. Suzanne C. Pollard
Martha Quinn
Carter and Joe Reid
Dr. Christopher Reina and Mr. Tell Carlson
Mr. William Reinhart
Jill and Andy Stefanovich

Stars (\$2,500-\$4,999)

Robert & Shannon Alexander
Rev. Vienna Cobb &erson
Corey & Gray Booker
S. Kay Burnett
Mr. JP Causey, Jr.
Jewel & Dean Caven
Richard & Kathryn Clary
Carolyn & Herb Davis
Drs. Mark & Georgean DeBlois
Marc Derks
Nancy Finch
Tom S. Gay
P. Christopher Guedri
Donna & Jon Hatfield
Susie & Michael Haubenstock
Gloria M. Hintz
Charles & Florence Hunt
Dianne & Darl Jewell
Martha Kelley
Joseph & Jane Knox
Morris & Jane Logan
Caroline & Chris McDowell
Robert & Beth Musick
Kendall & Brian Neely
William Paul Pitts
Catherine & Mike Rey
Ed & Alice Rivas
Anne Marie Irani & Larry Schwartz
Robert & Tara Seward
Martha Shickle
Carolyn Simpson
Griff & Cathy Surowka
Ed & Ruthie White
Vivian & Steve White
Whitney & Josh Reid
Julie Wilcox
Wilhelm & Helen Zuelzer

Designers (\$1,000-\$2,499)

Judith Abruzese
Philip Anastasi
S. Wyndham and Huldah Anderson
John Atkins
Michael Bagwell
Mabel Baldwin
Susan Barton
Jean Bear
James and Carolyn Behrens

Christopher Bergin, Jr.
Cara and Stephen Bowen
Doris Brody
Karen and Robert Buesing
Ben and Zoe Bunnell
June Burks
Alysa & Anthony Cargiulo
Keith and Pam Carney
Michelle Christian and Jeb Eakin
KC and Kristen Crosthwaite
Marian Dealto
Anne Dobson and Timothy Baird
Donna Douglas
Mark and Joni Dray
Margarete Eckhaus
Fred and Ellen Ende
Steven Farber and Ann Jewell
Lewis and Gena Farinholt
Melody G. Foster
Barbie Gallini
Gary and Tooie Garber
Noopur Garg
Anita Garland
Thomas and Carolyn Garner
Barbara and Vernon Glenn
Mike and Susan Gracik
David and Debra Haber
Pauli Hagan
Scott And Janet Hammer
David and Sandra Harless
Kitty Harlow
Nathan Hatfield
Debra Hayner
Michael and Paige Holbert
Sarah Holland
Anne Holton and Tim Kaine
Kathy Hughes
Haywood Hyman
Ann W. Jackson
John and Beryl Ball
Roger Johnson
Jackie Jones
Claire Kaugars
Beth and Richard Kelly
Pat Kibler
Martha Konvicka
Lisa and Paul Kotula
Sharon Kotula
Liz and Pat Lacy
Peggy Lee
June Lehman

*Deceased

Virginia and Andrew Lewis
 Yasmin Lutterbie
 Jeff and Mary Markunas
 K McCarthy
 Jack E. McClard
 Lynne McClendon
 Thomas and Donna McClish
 Thomas and Shannon Millisor
 Nicole Morris-Anastasi
 Linda and Terry Oggel
 Emmanuel Padilla
 Margaret Pence
 Janell Pridgen
 Rob and Bev Pugh
 Mary Ann and Ervin Reid
 Margaret and W. Taylor Reveley, IV
 Annetta and William Riley
 Alison and Joseph Rogish
 Cindy and Robert M. Rolfe
 Joseph and Virginia Sandford
 Klaus Schuller
 Alfred and Meredith Scott
 Janine Serresseque and Andy
 Cleveland
 David Sharrar
 Peggy and Daniel Siegel
 Robin Skoog
 Arnold Stolberg
 Suzanne and John Ley
 Jayme Swain
 Lange Taylor and Jared
 Silverman
 Joseph B. Terry
 Margaret R. Thomas
 Kishore Thota
 Thomas and Katina Vlahakis
 Gary and Sara Wallace
 Scott Warren
 Deborah Waters
 Donna Wheeler
 Joel White and Rachel Marrs
 Leanne M. Yanni
 John and Mary Zeugner

Ensemble (\$500-\$999)

Corynne Arnett
 Leola Bedsole
 Martin Beekman
 Ms. Patricia Bell
 Mariam Bello
 Rebecca Bietz
 Lynne Blain
 Mr. and Mrs. Brad Booker
 Mary Bowden
 Dr. and Mrs. Matthew Boyce
 Derrick Brewer
 Dr. and Mrs. Owen Brodie
 Ms. Sally M. Brown
 William Bryan
 Robert Buesing
 Carolyn Quinn
 Mrs. Rejena Carreras
 Michael Cole
 Mr. and Mrs. Robert Comet
 Rich Contreras
 Mr. William Cooper

Mr. and Mrs. Frank Creasy
 Druanne Cummins
 Mary Ann Curtin
 Mr. and Mrs. John Davenport
 Susanne Dibert
 Lloyd Dickson
 Mr. Steven Ebert
 Virginia Edmunds
 Mary Chris Escobar
 Mr. Aubrey Ford
 Mr. and Mrs. Craig Forman
 Ms. Brandon Fox and Mr.
 Christopher Arias
 Christian Fox
 Leigh and Drew Gallalee
 Jody Godsey
 Leslie and Grant Grayson
 Meredith Harbach
 Laura Heymann
 Ms. Sara Hillgrove
 Melanie Holloway
 Lucinda Hooper
 Michael Jarett
 Mr. & Mrs. William B. Jenkins Jr
 John Lambert
 Mr. Marshall Johnson
 Alison Kaufmann
 Anne Kemp
 Helen L. Konrad
 Kunal and Priyanka Kumar
 Diana LaMattina
 Mr. Matt Landwehr
 William Latham
 John Loyer
 Kathryn E. McCormick
 Mr. and Mrs. Dominic Madigan
 Jillian Marchant and Thomas
 Winston
 David J. Marchette
 Mr. Peter E. Marcia
 Mr. Bradley P. Marrs
 Mr. L. Richard Martin, Jr.
 Mr. and Mrs. Hank Mayer
 Dr. and Mrs. Read McGehee
 Mr. and Mrs. Marshall Morton
 Mr. and Mrs. Allen Neergaard
 Ann Nichols-Casebolt
 Mr. Joseph Papa
 Kathleen Patenaude
 Ms. Angelene Pell
 Mark and Caryn Persinger
 Julia Pilipenko
 Mitchell Polizzi
 Mr. and Mrs. Richard L. Ramsey
 Robert Rea
 Mr. and Mrs. Bruce Rennie
 Wayland T. Rennie
 Mrs. Aimee Rice
 Ms. Joan S. Richards
 Elizabeth Robbins
 Barbara and John Rose
 Mr. and Mrs. David and Linda
 Rose
 Fred Rosen
 Mr. & Mrs. Steven Saltzberg
 Kassie Schroth

Charol Shakeshaft
 Beth Shivak
 Eileen Sigmund
 Catherine Smith
 Maria P. Tedesco
 Meredith Thrower
 Daniella Tsamouras
 Mr. and Mrs. Daniel
 Vallandingham
 Patricia A. Wall
 Jane Page Watson
 Shannon Webb
 Steven Weisel
 Michael L. White
 Mr. David Wilson
 Mr. and Mrs. Everett Worthington
 Mrs. Nancy Wright
 Jane and Fred Yanni

Orchestra (\$250-\$499)

Sara Akl
 Judith Alexander
 Ms. Carol Anderson
 Jean Arrington
 Nathalia Artus
 Ron Barnett
 Joanne Barreca and Vic Bouril
 Mr. Zach Baumann
 Robert Beckwith
 Joe Bellamah
 Ms. Rosanna L. Bencoach
 Dr. Stephen H. Bendheim
 Anne K. Bishop
 Mr. and Mrs. Richard Bohrer
 Women's Club of Bon Air
 Mr. and Mrs. John and Peggy
 Borgard
 William Brand
 Mr. and Mrs. Charles Brewer
 Barbara Brock
 Bruce Brown
 L. Stanley and Martha Brown
 Ms. Irene H. Burlock and Mr.
 Joseph J. Holicky III
 Mr. Steve Caffery
 Allyson Cain
 Jennifer L. Carr
 Mrs. Catherine H. Cary
 Steve Chafin
 Ronald Ciamaga
 Ms. Terri Clifton
 Mr. and Mrs. Rick Coomer
 Mr. Matthew Costello
 Carolyn Crighton
 Ms. Marian Daniels
 Jessica Daugherty
 Mr. Jacob Devol
 Maura Dunn
 Sharon A. Esau
 Lynn Faugot
 Shannon Feagans
 Mr. and Mrs. Bruce Fletcher
 Ms. Felicia Fox
 Lisa Gay
 Darren Gibula
 Gregory J. Gilligan

Ann Goebel
 Mr. and Mrs. James Green
 Melissa Haber
 Jessica Hacker Trivizas
 Mr. and Mrs. John Hall
 Katie Hamann
 Ms. Hope Harris Foster
 Ms. Lynne Hartman and Mr. D. Redinbaugh
 Candace A. Haske
 Leslie Hausser
 Samantha Heise
 Anne Henley
 Laura L. Hicks
 Alice Hirata
 Constance J. Hom
 Mr. and Mrs. Gary Hopper
 Mr. and Mrs. Walter Howard
 Mr. Roger Hultgren
 Mr. and Mrs. Bob Jaspen
 Vanessa O. Johnson
 Mr. Dewey M. Jones
 Elizabeth King
 Mindy Kinsey
 Kristin Kumpf and Michael Barr
 Jay and Sally Lafler
 Lee LeBlond
 Anne S. Looney
 Chelsea Majors
 Mrs. James E. Mann, Jr.
 Mr. and Mrs. William A. Manson, Jr.
 Rachel Marrs
 Arthur McCray
 Brad McGetrick
 Nancy McMahon
 Joanne Meeley
 Matthew Meixler
 Carrie Miller
 Allison Mitchell
 Debbie Morris
 Janet Morrow
 Laila Nabhan
 Ms. Elizabeth Nance
 Ms. Karen J. Nelson
 Wade Ogg
 Mr. and Mrs. Fred Orelove
 Michelle Orsi
 Jacqueline D. Palmatier
 June Pankey
 Heather Phibbs
 Bill Pisa
 Nancy G. Powell
 Dr. Andrea Pozez
 Ms. Jennifer Procise
 Taylor Rambo
 Ms. Brooke Rhodes
 Mary Kay Williams
 Mr. and Mrs. John Ritz
 Ms. Desirée Roots-Centeio
 Judy Rurak
 Theresa Russo
 Leonard Sachs
 Mr. and Mrs. Thomas H. Sanders II
 Ms. Renae Y. Sands
 Vivian Schwartz
 Ms. Maura Scott

Mr. John G. Selph
 Misty Sexton
 Temma Shoaf
 Mr. Richard M. Simon
 Brooke & Susan Smith
 Ms. Susan Snyder
 Mr. and Mrs. Jack Spain
 James Speer
 Mr. and Mrs. Richard E. Strauss
 Caroline Szumski
 Mr. and Mrs. David Tetrault
 Diane Tiller
 David and Holly Timberline
 Ms. Betse Trice
 Ms. Sara Wallace
 Donna M. Warfield
 Kiffy Werkheiser
 Kathryn Whitlock
 Mr. & Mrs. Charles F. Witthoeft Esq
 Lisa Wood
 Harriet Yake
 Susan Youngs
 Ms. Renaita Zlatkin

THE REP SOCIETY

Ron Barnett
 Candace Haske
 Nathan Hatfield
 Brandon LaReau
 Yasmine Lutterbie
 David Marchette
 Kendall Neely
 Jean Pokorny
 Sherrina Sewell
 Joel and Matthew Vella
 Frank Watson
 Kiffy Werkheiser

INSTITUTIONAL CONTRIBUTORS

Cornerstones (\$50,000+)

Altria Group
 Anonymous
 E. Rhodes and Leona B. Carpenter Foundation
 Lettie Pate Whitehead Foundation
 Mary Morton Parsons Foundation
 McGeorge Family Fund
 Pauley Family Foundation
 Robins Foundation
 The Community Foundation for a Greater Richmond
 The Schubert Foundation

Angels (\$25,000 - \$49,999)

Atlantic Union Bank
 CultureWorks & the Arts and Cultural Funding Consortium
Supported by the City of Richmond & the Counties of Hanover & Henrico
 Roy E. Burgess II Fund

Saunders Family Foundation
 The Reinhart Foundation
 Virginia Commission for the Arts
 Virginia Sargeant Reynolds Foundation

Producers (\$10,000 - \$24,999)

Freeman Family Foundation
 Genworth Financial/CareScout
 Lewis & Butler Foundation
 R.E.B. Foundation
 The Chrisman Family Foundation
 The James & Margaret Carreras Foundation
 The Tomato Fund
 Virginia A. Arnold Endowment Fund
 Wilbur M. Havens Charitable Foundation

Directors (\$5,000-\$9,999)

Dominion Energy
 Encompass Health
 Estes Foundation
 Honey Foundation
 Lewis Insurance Associates
 McGuire Woods, LLP
 St. Catherine's School
 Universal Leaf Foundation
 Williams Mullen C&D Charitable Foundation

Stars (\$2,500-\$4,999)

Canal Capital Management
 Hunton Andrews Kurth LLP
 Kathryn & W. Harry Schwarzschild Fund
 Barbara William Thalhimier, Jr. Family Fund
 Virginia Family Dentistry

Designers (\$1,000-\$2,499)

Caplin Foundation
 CarMax Foundation
 Markel Corporation
 The Micawber Foundation, Inc.
 USAA
 Whiteford, Taylor, & Preston LLP

Ensemble (\$500-\$999)

Actor's Equity
 Alexander Brady Foundation
 CarMax Foundation
 Hartford/The Kroger
 Loucks Family Foundation
 PayPal Giving Fund
 PGA Tour Charities

Orchestra (\$240-\$499)

The Capa Foundation
 Common House Richmond
 Richmond Jewish Foundation
 Virginia Credit Union

IN HONOR & MEMORIAM

Hilda Hankins *in honor of* Laura Lee Chandler
Laura Bateman *in honor of* Martha Quinn
Nan McKenney *in honor of* Janine Sears
Phyllis Errico *in memory of* Audrey Errico
Scott & Janet Hammer *in memory of* Marion B. Hammer
Ralph & Jacqueline Harman *in memory of* Thomas Wyeth Harman
Jean Hartley *in memory of* Dorman Hartley
Gloria Hintz *in memory of* Greg Sparrow
Kiffy Werkheiser *in memory of* Adam Turk
In Memory of Margaret Perkinson

MATCHING GIFTS

Altria Client Services
AstraZeneca
Bank of America
Carmax
CarMax Foundation

Disney
Dominion Energy
Exelon Corporation
Exon
ICF
Kroger
Markel Corporation
Microsoft
PGA Tours
The Hartford
Total Quality Logistics
TowneBank
USAA
Virginia Federal Credit Union

IN-KIND CONTRIBUTIONS

Alton Lane
Amy Wratchford
ARC Home Interiors (Alysa Cargiulo)
Around the Table
Carreras Jewelers
Ed Trask
Flying Squirrels
Gary & April LeClair
GFWC Ashcake Woman's Club
Glamping RVA
Hunton Andrews Kurth LLP
Kingfish Boat Rentals
Linden Row Inn
Magna Hospitality
Main Street Spa & Wellness Center
Mama J's Kitchen
Maureen Regulinski
Moments by Maggi Photography
Nena Muerlin Photography
NES Cornhole Lounge
Oceano Restaurant
Osaka Sushi & Steak
Richmond Symphony
Richmond Triangle Players
Schwarzschild Jewelers
Spa Three Ten
Spa310 (Daniella Tsamouras)
Swisher Auctions
The Lilly Pad & Kingfish Boat Rentals
The Richmond Symphony
Tiffany & Co.
Truckle Cheesemongers
USA Med Bed Williams Mullen
Wawa
Waygone Brewery
WHISK
Willow Oaks Country Club
Yoga Dojo

JOIN THE REP SOCIETY!

A convenient, monthly giving program with benefits designed to connect you to the art your gifts make possible. Rep Society members receive exclusive benefits for as little as \$10 a month, like casting your vote for season titles, a limited edition season t-shirt, and more!

Become a sustaining donor and keep Virginia Rep open and accessible to ALL!

For more information, please contact Kiffy Werkheiser at 804-783-1688 x1238 or kwerkheiser@virginiarep.org.



Thank you so much to all of our donors for your generous support. To see the full list of all of those who have contributed, please visit our website.

