

**BARKSDALE SEASON**  
HANOVER TAVERN

**VIRGINIA rep**

**KEN LUDWIG'S**  
**Baskerville**  
**A SHERLOCK HOLMES MYSTERY**

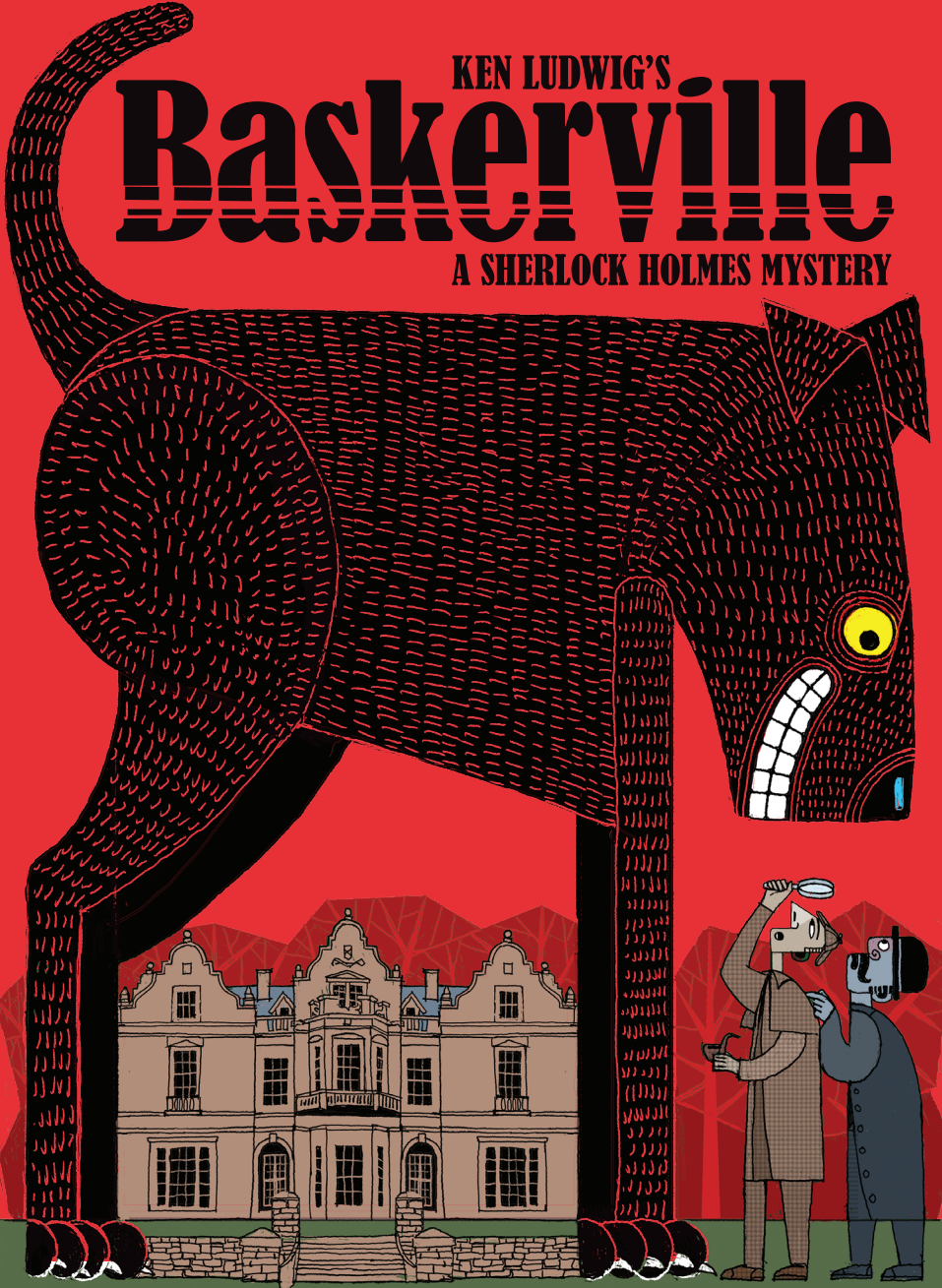


ILLUSTRATION BY ROBERT MEGANCK



JOIN US

January 27, 2024

6:00 pm

The Jefferson Hotel

# A NIGHT IN NEW ORLEANS

2024 ANYTHING GOES GALA

Cocktails + Dinner   Silent + Live Auctions   Live Music   Black Tie Optional

BENEFITTING  
VIRGINIA  
REPERTORY  
THEATRE



MARQUÉE SPONSOR

 **Atlantic  
Union Bank**

**Artistic Director of Programming** Rick Hammerly  
**Artistic Director of Education** Todd D. Norris  
**Artistic Director of Community** Desirée Roots  
**Interim Managing Director** Amy Wratchford

VIRGINIA  
**rep**

**KEN LUDWIG'S**  
**Baskerville**  
**A SHERLOCK HOLMES MYSTERY**

By Ken Ludwig

“Ken Ludwig’s Baskerville: A Sherlock Holmes Mystery” is presented by arrangement with Concord Theatricals on behalf of Samuel French, Inc.  
[www.concordtheatricals.com](http://www.concordtheatricals.com)

“Ken Ludwig’s Baskerville: A Sherlock Holmes Mystery” was originally produced by McCarter Theatre Center, Princeton, NJ  
Emily Mann, Artistic Director; Timothy J. Shields, Managing Director  
and Arena Stage, Washington, DC  
Molly Smith, Artistic Director; Edgar Dobie, Executive Producer

CO-SCENIC DESIGN  
**Thomas Hawfield**  
**Paul Takács**

COSTUME DESIGN  
**Sue Griffin**

LIGHTING DESIGN  
**Steve Koehler**

SOUND DESIGN  
**Jonathan Pratt**

FIGHT CHOREOGRAPHER  
**Irene Kuykendall**

STAGE MANAGEMENT  
**Laura Swygert**

DIRECTION  
**Paul Takács**

SEASON SUPPORT



E. Rhodes and Leona B.  
Carpenter Foundation



## CAST

---

Sherlock Holmes .....	<b>Travis Williams</b>
Doctor Watson.....	<b>William Vaughn</b>
Actor 1 .....	<b>Scott Jones</b>
Actress 1.....	<b>Irene Kuykendall</b>
Actor 2.....	<b>Joel White</b>

## FOR THIS PRODUCTION

---

Assistant Stage Manager .....	<b>Amber Hooper</b>
Assistant Costume Designers .....	<b>Sarah Grady, Marcia Miller Hailey, Jeanne Nugent</b>
Photographer .....	<b>Aaron Suttan</b>
Vidographer.....	<b>Austin Lewis</b>

## SPECIAL THANKS

---

Patricia Munford, Sassy Rychalski, and Donna Warfield

The videotaping or making of electronic or other audio and/or visual recordings of this production and distributing recordings or streams in any medium, including the internet, is strictly prohibited, a violation of the author(s)'s rights and actionable under United States Copyright Law. For more information, please visit: <https://concordtheatricals.com/resources/protecting-artists>

## COMPANY BIOS

---



**Travis Williams**, he/him, (Sherlock Holmes) is thrilled to be making his debut with Virginia Rep! Travis was most recently seen as Eddie/Dr. Scott in RTP's production of *The Rocky Horror Show*. Other Richmond Highlights include Mortimer Brewster in *Arsenic & Old Lace* at Dogwood Dell, Sebastian in *The Tempest* with Richmond Shakespeare, and Holmes/Moriarty/Orderly in *Holmes and Watson* at Swift Creek Mill

Theatre. He has spent the last decade teaching improv to high schoolers and is the creator of the Improv Mixtape, which can be seen at Bridge 9 Theater. He would like to thank his friends and family for their continued support. And so much love to Rachel, his partner, for their continued support and strength as they continue this wonderful, strange journey together.



**William Vaughn**, he/him, (Doctor Watson) is not very good at solving mysteries. For instance, he can't seem to find any of his previous credits to put in this bio. He took them to rehearsal once and hasn't seen them since. Perhaps someone is trying to sabotage him. One of his fellow actors? The director? Or... no... it couldn't be... one of the stage managers? Well played, Amber and/or Laura. Well played. Something

that's no mystery, however, is his love for his fiance Chelsea and their two cats, Penny and Baxter. [www.williamvaughnisanactor.com](http://www.williamvaughnisanactor.com)

## COMPANY BIOS

---



**Scott Jones** (Actor 1) is happy to be involved in his first Virginia Rep production, *Baskerville*. This might be the most fun he's ever had in rehearsals. Scott comes to us via a lifelong career in theatre that led him to Richmond and VCU to attain his MFA in Performance Pedagogy. Scott is what he calls a "Theatre Generalist," which is a fancy name for "the guy that does everything because nobody else wanted to do it" work in theatre. He is now teaching at St. Catherine's School here in Richmond. Thanks for the opportunity, hopefully it won't be the last.



**Irene Kuykendall**, she/her, (Actress 1) is an actor, director, and educator with a Masters in Text & Performance from the Royal Academy of Dramatic Art in London and conservatory training from The American Musical and Dramatic Academy in NYC. Acting credits include: Maria in *The Sound of Music* (JFT); The Woman in *The 39 Steps*, and Meg Magrath in *Crimes of the Heart* (Virginia Rep); and Lizzy Bennet in *Pride & Prejudice* (Richmond Shakespeare). Directing credits include: *GASLIGHT* (Swift Creek Mill), *ALL SHOOK UP young@part* (Virginia Rep's Summer Showtime), *CLUE: HSE* (Midlothian HS), and *The Good Fight* (ARGS). Irene would like to thank her husband, Axle, for his love and support.



**Joel White**, he/him, (Actor 2) is tickled pink to be back with Virginia Rep and to be making his Hanover Tavern debut. Past credits include *Huck and Tom and the Mighty Mississippi* (Virginia Rep, Huck); *Pride and Prejudice* (Quill, Mr. Collins); *Rosencrantz and Guildenstern Are Dead* (Quill, Hamlet); *Office Hours* (CAT, Richard/Bobby); *Pure Confidence* (UR, George DeWitt); *Les Blancs* (UR, Major Rice); and *The Comedy of Errors* (Richmond Shakespeare, Antipholus of Syracuse). When Joel isn't busy playing multiple characters onstage, he practices employment law. Many thanks to Virginia Rep and to all of you for patronizing the arts. Much love as always to Rachel.

**Paul Takács**, he/him, (Director) Former Artistic Director of The Shop in New York City, where he directed NYC premieres of David Harrower's *Knives in Hens* at 59E59 Theaters and Philip Ridley's *Dark Vanilla Jungle* at HERE Arts Center. Other credits for The Shop include the American premieres of Nobel laureate, Jon Fosse's *I Am The Wind* and Philip Ridley's *Tender Napalm*, both at 59E59 Theaters. Education: BA in Drama, St. Mary's College of Maryland, MFA in Directing, The New School for Drama. Paul is currently Head of Upper School Theatre at St. Christopher's and St. Catherine's Schools in Richmond, VA as well as Artistic Director of Ampersand, the joint theatre company of St. Christopher's and St. Catherine's Schools. [www.paultakacsdirector.com](http://www.paultakacsdirector.com)

## COMPANY BIOS

---

**Tommy Hawfield** (Co-Scenic Designer) is appreciative of the opportunity to showcase his first co-design at Hanover Tavern. He graduated from Catawba College in 2012 with a Theatre Bachelor Degree with emphasis in technical theatre. He has worked with Virginia Rep for eleven years starting as a carpentry intern moving up to technical director. After many years in theatre he acknowledges that he still has much to learn and is excited for what the future holds.

**Sue Griffin** (Costume Designer) has headed up the Virginia Rep costume department for the last nineteen years. Over this time, the shop has produced costumes for more than 300 shows, from traveling fairy tales to major musicals. With the help of the full time shop, hundreds of costumes, wigs, shoes and hats are sent out on a stage or packed up on tour. Some of the most memorable shows include *1776*, *Dirty Rotten Scoundrels*, *The Color Purple*, *The Curious Incident of the Dog in the Night-Time*, *A Gentleman's Guide to Love and Murder*, and *Beautiful: The Carole King Musical*. Sue thanks the team for this production — Marcia, Sarah, Jeanne, Sassy and Patricia. For a show that has 5 actors playing 37 roles, it takes a whole costume shop to produce and determine who wears what when.

**Steve Koehler**, he/him, (Lighting Designer) is excited to be a part of this production. Select previous Virginia Rep credits include: *The Santa Clues*, *POTUS*, *The Emperor's New Clothes*, *A Doll's House Part 2*, *Pipeline*, *Peter Pan*, *The Syringa Tree*, *The Laramie Project*, and *Gross Indecency*. Steve had also designed extensively for The Company of Fools in Hailey Idaho as well as several other local companies. Steve is the Managing Director of Swift Creek Mill Theatre, is married to local musician Shellie Johnson and proud father to three children.

**Jonathan Pratt**, he/him, (Sound Designer) recently moved to Richmond from Southern Oregon, Jonathan is thrilled to be designing at Virginia Rep after joining as the Audio/Visual Manager. Previously, he was the resident sound and projection designer for Camelot Theatre where some of his favorite designs include *Something Rotten*; *Hello, Dolly!*; *Almost, Maine*; *Matilda the Musical*; and *Catch Me If You Can*. In addition to design, Jonathan directed *Catch Me If You Can* and wrote and directed tribute shows to Stephen Sondheim and Motown in addition to adapting and directing productions of *Dr. Jekyll and Mr. Hyde*; *War of the Worlds*; *Jane Eyre*; *Dracula*; and *Alice in Wonderland*.

**Laura Swygert**, she/her, (Stage Manager) is excited to join the Virginia Rep team! Recent stage management credits include *White Christmas* (Lexington Theatre Company); *Mud Row*, *Barefoot in the Park*, *Steel Magnolias* (Gulfshore Playhouse); *Xanadu*, *The Cake* (Cortland Repertory); *Ripper Row* (Busch Gardens Williamsburg); *Bye Bye Birdie*, *Buried Deep* (Endstation Theatre Company). A Florida native, Laura graduated from Florida State University in Spring of 2022. She thanks her friends, family, and cat Arthur for their support. Let's connect! @lauraswyggs

**Amber Hooper** (Assistant Stage Manager) studied theater at Eastern Mennonite University where she served as stage manager, costume assistant, and various other backstage roles for many shows during her four years in undergrad. Her recent credits include being Assistant Stage Manager for *Honky Tonk Laundry*; *Steel Magnolias*; *Barefoot in the Park*; *Dear Jack*, *Dear Louise*; and the light board operator for *Ella and Her Fella Frank* at Virginia Rep.

## COMPANY BIOS

---

**Ken Ludwig** (Playwright) has had six productions on Broadway and eight in London's West End. His 34 plays and musicals are staged around the world and throughout the United States every night of the year.

His first play, *Lend Me a Tenor*, won two Tony Awards and was called "one of the classic comedies of the 20th century" by *The Washington Post*. *Crazy For You* is currently running on London's West End. It was previously on Broadway for five years, on the West End for three, and won the Tony and Olivier Awards for Best Musical.



In addition, he has won the Edwin Forrest Award for Contributions to the American Theatre, two Laurence Olivier Awards, two Helen Hayes Awards, the Charles MacArthur Award, and the Edgar Award for Best Mystery of the Year. His other plays include *Moon Over Buffalo*; *Leading Ladies*; *Baskerville*; *Sherwood*; *Twentieth Century*; *Dear Jack, Dear Louise*; *A Fox on the Fairway*; *A Comedy of Tenors*; *The Game's Afoot*; *Shakespeare in Hollywood*; and *Murder on the Orient Express*. They have starred, among others, Alec Baldwin, Carol Burnett, Kristen Bell, Tony Shaloub, Joan Collins and Henry Goodman.

His book *How to Teach Your Children Shakespeare*, published by Penguin Random House, won the Falstaff Award for Best Shakespeare Book of the Year, and his essays on theatre are published in the *Yale Review*. He gives the Annual Ken Ludwig Playwriting Scholarship at the Kennedy Center American College Theater Festival, and he served on the Board of Governors for the Folger Shakespeare Library for ten years. His first opera, *Tenor Overboard*, opened at the Glimmerglass Festival in July 2022. His most recent world premieres were *Lend Me A Soprano* and *Moriarty*, and his newest plays and musicals include *Pride and Prejudice Part 2: Napoleon at Pemberley*, and *Lady Molly of Scotland Yard*.

His plays include commissions from the Agatha Christie Estate, the Royal Shakespeare Company, The Old Globe Theatre, and the Bristol Old Vic. For more information visit [www.kenludwig.com](http://www.kenludwig.com).

Sign up to get our **ENews**.

Visit **[VirginiaRep.org](http://VirginiaRep.org)** and click **Contact & News**

**FOLLOW US ONLINE!**



VAREPTHEATRE



@VAREPTHEATRE



**Whatever Your Business Needs,  
We'll Save You.**

**Contact Us Today**

**thesupplyroom.com | 804.412.1200**



# **ZERO HOUR**

**MARCH 16 - APRIL 7, 2024**  
**THEATRE GYM**

**BY JIM BROCHU**  
**FEATURING JASON MARKS**  
**DIRECTED BY DEBRA CLINTON**

A one-man theatrical tour-de-force celebrating theatre legend, Zero Mostel. When a naïve reporter attempts to interview the famously volatile artist, it prompts an explosion of memory, humor, outrage, and juicy backstage lore.

**PRODUCED BY VIRGINIA REP**  
**IN PARTNERSHIP WITH THE WEINSTEIN JCC**  
Originally produced by Jewish Family Theatre at the Weinstein JCC

**804-282-2620**

**VIRGINIAREP.ORG**



## VIRGINIA REP STAFF

**Artistic Director of Programming** ..... Rick Hammerly  
**Artistic Director of Education** ..... Todd D. Norris  
**Artistic Director of Community** ..... Desirée Roots  
 Production Manager ..... Ginnie Willard  
 Production Associate ..... Hannah Hoffert  
 Technical Directors ..... Thomas Hawfield, Hans Paul  
     Carpenter ..... Shawn Goodman  
     Carpentry Apprentice ..... Hannah Patteson  
 Scenic Charge Artist ..... Amy Gethins Sullivan  
     Scenic Artist ..... Dasia Gregg  
     Props Supervisor ..... Cai Hayner  
     Scenic/Props Apprentice ..... Alondra Castro  
     Production Electrician ..... Kacey Yachuw  
     Lighting Apprentice ..... Dennis Cheeks  
     Audio Visual Supervisor ..... Jonathan Pratt  
     Audio Visual Apprentice ..... Truisten Murreh  
 Director of Costumes ..... Sue Griffin  
     Cutter/Draper ..... Marcia Miller Hailey  
 Facilities Manager ..... Bruce Rennie  
     Custodial Services ..... Tim Betha  
 Company Manager ..... Donna Warfield  
 Arts in Education Manager ..... Amber Martinez  
 Education Manager ..... Vivian Schwartz  
 Tour Assistant ..... SJ Phillips

**Interim Managing Director** ..... Amy Wratchford  
 Executive Assistant ..... Jessi Johnson Peterson  
 Assistant Director of Development ..... Melissa Haber  
 Community Health and Wellness Manager .. Jamie Wilson  
 Development Assistant ..... Austen Weathersby  
 Director of Sales ..... Mark Persinger  
 Communications Consultant ..... Liz Nance  
 Graphic Designer ..... Druanne Cummins  
 Internet Services Mgr ..... Jessica Printz Daugherty  
 Marketing Associate ..... Kylee Márquez-Downie  
 Box Office Manager ..... Janine Serresseque  
     Assistant Box Office Manager ..... Shannon Frazier  
     Box Office Associates ..... Sam Cook,  
         Grace Coté, D.J. Cummings, Erin Dabrowski,  
         Rod Easter, Leanna Hicks, Joel Kimling,  
         Emily Stava, Rachel Weatherby, Jack Wirth  
 Front of House Mgr/Rentals Coord ..... Janelle Cottman  
 Chief Financial Officer ..... Mike Muldowney  
 Senior Accountant ..... Emily Ritter  
 Accounting Associate ..... Sara Heifetz  
 External Auditor ..... Keiter  
 Human Resources Manager ..... Lisa Kotula  
     Archive and Admin Associate ..... Austen Weathersby  
 HR Consultant ..... Tinker HR



### VENUE at Virginia Rep Center

Richmond's Premiere Arts and Events Center

Theater for up to 650

Flexible spaces from 1 to 400, including  
the Hermitage Ballroom, which offers  
seated dining for up to 400

Catering Services (On and Off Site)  
from Award-Winning Chefs

4204 Hermitage Road  
Richmond, VA 23227

[info@VenueRVA.com](mailto:info@VenueRVA.com) (804) 835-5949  
[www.VenueRVA.com](http://www.VenueRVA.com)



## LEADERSHIP



### **RICK HAMMERLY**

*Artistic Director  
of Programming*

Rick has worked as an award-winning director, actor, filmmaker, and arts manager for over three decades. For Virginia Rep, he has directed *Martha Mitchell Calling*, the world premiere of *After December*, and *Beautiful: the Carole King Musical*, for which he recently received a 2023 RTCC Award. He received a 2018 Helen Hayes Award for his direction of *Lela & Co.* and a 2020 Helen Hayes Award nomination for his direction of *Agnes of God*, both for Factory 449. Other directing credits include *Dizzy Miss Lizzie's Roadside Revue's The Brontes* (New York Musical Theatre Festival), *Reykjavik* (Rorschach Theatre), *Emilie: La Marquise du Châtelet Defends Her Life Tonight* (WSC Avant Bard), *Driving Miss Daisy* featuring Karen Grassle (Riverside Center for the Performing Arts), *Junie B. Jones Is Not a Crook* (Adventure Theatre MTC), *Dead Man Walking* (American University) and *Closet Land* (Factory 449).

As an actor, he has performed Off-Broadway and regionally, receiving a Helen Hayes Award for his



### **TODD D. NORRIS**

*Artistic Director  
of Education*

Todd is a director, actor, writer, educator, and presenter who has worked in regional, academic, and museum theatre for over 30 years. He is past president of the International Museum Theatre Alliance and he appears regularly in museum theatre programs at Historic Jamestowne.

Todd comes to Virginia Rep from the Children's Museum of Indianapolis, IN — the world's largest children's museum — where he spent seven years serving first as Director of Interpretation and then Associate Vice President of Interpretation and Family Programs. In these roles, he was responsible for artistic direction for its professional children's theatre seasons, fiscal management, coordinating gallery performances, and overseeing quality for hundreds of daily programs.

Earlier in his career, Todd worked at the Colonial Williamsburg Foundation as Senior Manager of Performance Interpretation. While at Colonial

Williamsburg, he also acted in several episodes of their Emmy-Award winning *Electronic Field Trips*, and directed and performed in many evening programs and special events.

turn as Hedwig in Signature Theatre's production of *Hedwig and the Angry Inch*, as well as nominations for his work in *Angels in America* (Signature Theatre), *Me and Jezebel* (MetroStage) and *Oliver!* (Adventure Theatre MTC). For ten years, he played Mr. Fezziwig in Ford's Theatre's annual production of *A Christmas Carol* and was most recently seen as Miss Tracy Mills in Round House Theatre's *The Legend of Georgia McBride*.

His debut film, *signage*, which he wrote, directed, and produced, has screened in over 60 film festivals worldwide, receiving 6 film festival awards and was subsequently licensed by MTV's LOGO Channel.

He is a founder and the current Producing Artistic Director of Factory 449, the recipient of multiple Helen Hayes Awards, including the John Aniello Award for Outstanding Emerging Theatre Company, and the Executive Director of the Washington Area Performing Arts Video Archive (WAPAVA).

Rick is a member of the Stage Directors and Choreographers Society (SDC) and Actors' Equity Association (AEA). He received a B.A. in Theatre from the University of Virginia, an M.A. in Film & Video Production from American University, and has completed the coursework for an M.A. in Arts Management, also from AU.

He has taught and directed at several schools including The College of William and Mary, Christopher Newport University, Alice Lloyd College, and Wright State University. Favorite previous directing assignments include *Humble Boy*, *Tales of Olympus*, *Eleemosynary*, and the world premiere of *The Santa Clues*.

He is originally from Powell, OH, and received his M.F.A. in Acting from the University of Louisville and his B.A. in Theatre Performance, with a minor in music from the University of Findlay.

His responsibilities at Virginia Rep include artistic direction of all family mainstage productions in the Jessie Bogese Theatre and all educational touring productions for Virginia Rep On Tour, as well as supervision for all of Virginia Rep's educational offerings including our camps, classes, residencies, and workshops. Todd is also an associate member of the Stage Directors and Choreographers Society.

He is originally from Powell, OH, and received his M.F.A. in Acting from the University of Louisville and his B.A. in Theatre Performance, with a minor in music from the University of Findlay.

## LEADERSHIP



### **DESIRÉE ROOTS**

*Artistic Director  
of Community*

Desirée has showcased her triple threat talent for over 35 years as an active member of the Gospel, Jazz, and Theatre scenes regionally, nationally, internationally, and in Richmond, VA where she grew up. She started singing in church when she was four, and started her professional theatrical career at age 13. Growing up in a musical family, it was only natural that she follow in her performing parents' footsteps.

Desirée has performed throughout the East Coast with orchestras, jazz ensembles, and as leader of her own ensembles. She's been the opening act for internationally renowned artists including Boney James, Brian McKnight, the late Phyllis Hyman, and B. B. King. She is a Grammy nominated recording artist and has produced shows she wrote including *Ella at 100* in honor of the First Lady of Jazz, Ms. Ella Fitzgerald's 100th birthday. She received the Theresa Pollak award for "Vocal Excellence" in 2014.



### **AMY WRATCHFORD**

*Interim Managing  
Director*

After more than a decade as Managing Director for the American Shakespeare Center in Staunton, VA, Amy Wratchford pivoted in early 2021 to launch The Wratchford Group, a nationally known arts management consultancy with regional theater clients throughout Virginia as well as Florida, California and Chicago

As the chief administrative and financial officer at the American Shakespeare Center, Amy oversaw finance, marketing, development, and other business management functions for ASC.

Before joining ASC, Amy served as Managing Director of Synchronicity Theatre in Atlanta. Previously, she worked for 13 years in a number of capacities in theatre in New York City including producer, director, and actor. Amy regularly serves on grant panels, including the National Endowment for the Arts and Virginia Commission for the Arts, as well as adjudicating panels, including EdTA China's 2019 National Young

Along with performing, Desirée has had a long standing career in the corporate and nonprofit sectors. Upon receiving her B.A. from Virginia Union University, she initially embarked on a teaching path. This quickly evolved into other opportunities such as a Programming Manager for Richmond Jazz Society, Inc., Booking Manager for Downtown Presents (now Venture Richmond), and client liaison for Drake Beam & Morin, a Fortune 500 corporation. She has also been an educator and music facilitator privately and within the Henrico and Richmond Public school systems for over 20 years.

Desirée began her association with Virginia Rep as a high school intern when the company was Theatre IV with the unique mission "to seek national-caliber excellence equally in four areas: the arts, education, children's health, and community leadership."

These four pillars of service are what drew her to become *Artistic Director of Community* — "working with the theatre company I love to serve the community I love."

Thespian Festival in Shanghai as well as state and regional community theatre festivals.

Amy is an elected member of the Staunton City School Board and serves on the Shenandoah LGBTQ Center's Community Advisory Board. She teaches a dual-enrollment Intro to Theatre course at the Shenandoah Valley Governor's School and routinely lectures on finance, budgeting, and nonprofit governance for Mary Baldwin University's MFA program in Shakespeare and Performance and others. Amy holds a bachelor's degree in Acting from the Tisch School of the Arts of New York University and a master's in fine arts degree in Performing Arts Management from Brooklyn College.

Amy has been immersed in the Virginia theater scene for 13 years and has a history with Virginia Rep, having participated in several of our strategic planning processes. She has an incredible passion for the arts, deep compassion for the people who make a theater run, and a keen understanding of the role we play within our community. Her expertise in interim theater leadership, financial analysis and organizational structure assessment and reorganization is precisely what we need right now as we chart an exciting future and launch a national search for our next managing director.

## **Inclusion, Diversity, Equity, and Access (IDEA) Accountability Statement**

Since 2020, Virginia Repertory Theatre has been intentional in our efforts to become an artistic home that is multicultural in representation and where everyone is welcomed and included. We still have much work to do and continue to commit to doing our part to dismantle systems of oppression, not only in the theatre community, but everywhere it is present.

### **Our Commitment**

We commit to examining our organizational culture to assure that we are an artistic home centered on anti-racist and anti-oppression practices. We will actively pursue and embrace inclusion, diversity, equity, and access in all aspects of art, business, and life in our community.

We will intentionally make space for the diverse voices of our board, staff, artists, and theatre community.

We will seek to include and reflect on the varied experiences of our community to ensure everyone has access to live theatre that entertains, inspires, and challenges. We will be mindful of Black, Indigenous, and Persons of Color (BIPOC); Asian American Pacific Islander (AAPI); People with Disabilities, Lesbian, Gay, Bisexual, Transgender, Queer+ (LGBTQ+), and other marginalized communities in our efforts and we will actively seek to learn from them.

We make these commitments to the theatre community and to the community at large and we ask that they take this journey with us and hold us accountable.

We will commit to implement our action plan so that  
we can honestly say:

At Virginia Repertory Theatre, everyone has a voice.

At our theatre, everyone is welcomed and included.

*Please refer to the Social Justice section of our website for  
our full Anti-Racism Commitment & Accountability Statement  
and our history in support of racial equity.*

## OUR MISSION

Our Mission: To entertain, challenge and uplift our communities through the power of live theatre. To that end, we seek national caliber excellence in the arts, education, and community health and leadership.

## BOARD OF DIRECTORS

**Martha Quinn** - *Chair*

**Christopher S. Reina, PhD** - *Vice Chair*

**Meredith Miles** - *Corporate Secretary*

**Laura Lee Chandler** - *Immediate Past Chair*

Jason De La Cruz

Trish Forman

Dr. Barbara M. Glenn

EmJay Johnson

Dirk D. Lasater

Kathy Messick

Kendall Baltimore Neely

Carolyn Paulette

Susan Rickman

Martha Shickle

Vivian White

Leanne Yanni, MD

## VIRGINIA REPERTORY THEATRE

114 West Broad Street; Richmond, VA 23220

Administration: 804-783-1688 Box Office: 804-282-2620

VIRGINIAREP.ORG



# THANK YOU, DONORS!

---

We thank the many individuals and institutional funders who have made charitable contributions in the past year. The following lists reflect contributions to our annual operating fund between Donations November 1, 2022 - October 31, 2023. If you would like to join these supporters by donating to our nonprofit theatre, please visit [www.virginiarep.org](http://www.virginiarep.org) to **DONATE NOW** or mail your contribution check to Virginia Repertory Theatre, 114 West Broad Street, Richmond, VA 23220. Corrections to this list or questions about donating should be directed to our Development Office at (804) 783-1688 x1263.

## INDIVIDUAL CONTRIBUTORS

---

### Angels (\$25,000+)

The Estate of Agnes B. Cain\*  
Perry & Meredith Miles  
The Estate of Martha Vannoy\*

### Directors (\$10,000-\$14,999)

Anonymous  
Ellen & Orran Brown  
Gonzalee M. Ford  
Mr. & Mrs. Andrew Lewis  
Frances Lewis  
Bill & Carolyn Paulette  
Suzanne C. Pollard

### Stars (\$5,000-\$9,999)

Jane Beaver  
Susie Stevens Bogese  
J. Read, Jr. & Janet Dennis Branch  
Mr. & Mrs. James Carreras, Jr.  
Mr. J.P. Causey, Jr.  
Josée & Bill Covington  
Mrs. Jammie Coy  
Margaret Freeman  
Ms. Carrie T. Galeski  
Don & Betsy Garber  
Mr. & Mrs. Thomas F. Garner, Jr.  
Hugh & Nancy Harrison  
Jane & Jim Hartough  
Margaret T. Lee  
Judith & Mary O'Brien  
Sean Rapoza & Liz Kincaid  
William L. Reinhart  
Susan I. Rickman  
Paul & Nancy Springman  
Jeanette M. Welsh

### Stage Managers (\$2,500-\$4,999)

Pete & Marcia Alcorn  
Ruth & Franco Ambrogi  
Jan & Brad Booker  
Liz & Ben Bruni  
Janet & Duane Deskevich  
Mr.\* & Mrs.\* George Flowers III  
Robert & Lynne Glasser  
Stephen & Cheryl Goddard  
Chris & Cheryl Guedri  
Gloria Mae Hintz  
Bruce & Janet Kay  
Lynne McClendon  
Jean Normandy  
Karen and John Palen  
Martha Quinn

Joe & Carter Reid  
Larry & Matilda Shifflett  
Amery & Dave Whitby  
Dr. Leanne Yanni  
Helen & Wil Zuelzer

### Community Builders (\$1,000-\$2,499)

Ric & Rhona Arenstein  
Page Bauder  
James & Kelly Beazley  
Diana & David Beran  
Douglas W. & June M. Burks  
Keith & Pam Carney  
Jewel & Dean Caven  
Laura Lee & Ted Chandler  
Michelle Christian  
Rev. Vienna Cobb Anderson  
Mary Ann Curtin  
Carolyn A. Davis  
Drs. Georgean & Mark DeBlois  
Jason & Paige De La Cruz  
Betty Ann Dillon  
Donna T. Douglas  
Thomas Eilerson  
Regina & Eric Elbert  
The Farrell Family  
Nancy Finch  
Trish & Craig Forman  
Paul Galanti  
Dr. Gary & Tooie Garber  
Bill & Mary Garrison  
Vernon & Barbara Glenn  
Susan & Mike Gracik  
Kyle & Kym Grinnage  
Patricia Hackler  
Diana & David Hall  
Kitty Harlow  
Andrew C. Harris  
Rev. & Mrs. Charles B. Hunt  
Brian & Tammy Jackson  
Michelle Johnson  
Bevin & Michael Kehoe  
Mr. & Mrs. Joe Knox  
Dirk & Grace Lasater  
June Lehman  
Jane & Morris Logan  
Tom & Emily Love  
Pete Low  
Alice & Daniel Lynch  
Bill & Lyn Manson  
Jeff & Mary Ann Markunas  
Upton S. & Ann S. Martin III  
Chris & Caroline McDowell  
Kathy Messick

John Michael Muldowney  
Robin & Chris Nagle  
Todd D. Norris & Billy Bryan  
Terry & Linda Oggel  
Kathleen Patenaude  
Margaret Pence  
Dr. Christopher Reina & Tell Carlson  
Edward & Alice Rivas  
Alison & Joseph Rogish  
Bob & Cindy Rolfe  
Linda & David Rose  
Barbara & John Rose  
John A. Rupp  
Mr. & Mrs. James E. Ryan, Jr.  
Virginia L. Sandford  
Larry Schwartz & Anne-Marie Irani  
Martha Shickle  
Martha Singdahlsen  
Ms. Margaret R. Thomas  
Ted & Katie Ukrop  
Jim & Bobbie Ukrop  
Fredrick Vogt  
Adrienne Whitaker  
Dr. Roger & Barbara Whiteway  
Steve & Amy Williams  
Kimberly Wilson

### Co-Stars (\$500 - \$999)

Anonymous  
Howard Armistead  
Robert L. & Sandra Balster  
Erika & Eldridge Blanton  
Corey & Gray Booker  
Kay Burnett  
James & Gayle Bynum  
William H. Carter  
Lynn L. Clayton  
John & Susan Claytor  
Emily Cole-Jones & Robb Jones  
Druanne & Ralph Cummins  
Marian DeAlto  
Anne M. Dobson & Timothy S. Baird  
Virginia Edmunds  
David & Mary Frediani  
Thomas S. Gay  
Mr. & Mrs. Robert B. Giles  
Joann Grayson  
Sara Hillgrove  
Jackie Jackson & Joseph F. Yates  
Dianne Jewell  
David & Sharon Johannas  
Dr. Claire C. Kaugars  
Bev & Sid Koerin  
Ken & Kathy Lemelin  
Dr. & Mrs. Steven Linas

Amy & Mac Marshall  
Sallie & Frank Mayer  
K. McCarthy  
Jack & Marilyn McClard  
Cathy & Read McGehee  
Morenike & Brandon Miles  
Mr & Mrs. C. Glenn Miller  
Mr. & Mrs. Marshall N. Morton  
Allen & Diane Neergaard  
Kelly & Christy O'Keefe  
Elizabeth Orsi  
Gail & Barry Ridgeway  
Bradley Riddlehoover  
G. Randolph & Barbara Robertson  
Alfred & Meredith Scott  
Tara & Rob Seward  
Griff & Cathy Surowka  
Richard & Ruth Szucs  
Margaret Lee Talley  
Heather & Harry Turton  
Robert & Betty J. Van Sickle  
Edward Villanueva  
Patricia Wall  
Dr. Deborah Waters &  
Rev Dr. E. Allen Coffey  
John & Diane Whiteway  
Sandra & Roger Wiley  
Tamra & Jeffrey Wilt

**Ensemble (\$250 - \$499)**

Mr. & Mrs. John G. Adamson  
Anonymous  
Mabel Baldwin  
Gordon & Nancy Bass  
Jean Bear  
Mr. & Mrs. Anthony J. Bell, Jr.  
John & Peggy Borgard  
Debra Bradshaw  
Anne & Ron Britt  
Anne Bugarin  
Anne & Steve Caffery  
Becky Clarke  
Rich Contreras  
Janet L. Cook  
Donna Copley & Janet Inwood  
Anne & Billy Coward  
David & Carolyn Crighton  
Blair Curdts  
Horace Edward Dabney  
Matt & Mindy Dumeer  
Michael Escobar  
Steven Farber & Ann Jewell  
Howard & Leigh Ann Feller  
John & Dawn Hall  
Kathy Headlee  
Jeb & Becky Hockman  
Alison Holt Fuller & Brandon Fuller  
Walter & Geraldine Howard  
Walter Inscoe  
Lynn Ivey & Cyndy Brown  
Jennings & Matt Jarreau  
Bob & Gail Jaspén  
Ally & John Keefe  
Ron & Ann Klipp  
Dennis Lieberman & Patricia  
Vastano  
Jillian Marchant & Thomas Winston

L. Richard Martin, Jr.  
Connie McHale  
Margaret Merritt  
Suzanne & Rick Morris  
Ann Nichols-Casebolt  
Kendall & Brian Neely  
Ian & Rose A. Nimmo  
Robert & Karen Nowicki  
Mr. & Mrs. Kenneth G. Pankey  
Mrs. Patsy K. Pettus  
Heather Phibbs  
Rob & Bev Pugh  
Nadine Rapoza  
Toni & Bruce Rennie  
Lucinda & Robert Ritter  
Desirée Roots Centeio  
Lynn & Jay Schwartz  
Cindy & Joe Shearin  
Carolyn & John Simpson  
Robin & Jeff Skoog  
Jane Sper  
Tom & Jean Stevens  
Maria Tamburri  
Julie Toben  
Eugene P. Trani  
Daniel & Charlene Vallandingham  
Mr. & Mrs. Thomas H. Walker, Jr.  
Donna Wheeler  
Vivian White  
Mary Ann Wilson  
Rick & Lane Witthoefft  
Cheryl Yancey

**Curtain Raisers (\$100 - \$249)**

Carl R. & Darlene Z. Ackerman  
Dr. & Mrs. Robert A. Adler  
Anonymous  
Bev Appleton  
Ally & Jay Ashcraft  
Nathalia Artus  
John Atkins  
Sally T. Bagley  
Jonathan Baliles  
Ron Barnett  
Robert Battle  
Jerry & Patricia Bayer  
Mr. William H. Bays, Jr.  
Susan & David Beach  
Martin Beekman & Dorothy Tarleton  
Stephen Bendheim  
Roxanne Bennett  
Elizabeth Blair  
Jennifer & William Blandford  
Richard Bohrer  
Eugenia H. Borum  
William Brand, Jr.  
Doris & Bob Brody  
John Bryan  
Jeffrey Buchner  
Priscilla Burbank  
Mrs. Patricia F. Carrington  
Steve Chafin  
Dr. & Mrs. Richard Clary  
Cynthia L. & Kip K. Coco  
Linda Cooke  
David Crank  
Mr. Mark A. Creery

Charles Owens Davidson  
Frances Doyle  
Robert Duntley  
Donna Eastep  
Larry & Mary Kathryn Eek  
Tina Egge  
Phyllis A. Errico  
Lewis Farinholt  
Mrs. Robert & Marcella Fierro  
Margaret Friedenberg  
Belinda Friday  
Anita Garland  
Richard Gehr  
Larry & Brenda Gilman  
Ann M. Goebel  
Ralph & Jocelyne Graner  
Bill & Kathy Groves  
Michael & Terry Gulino  
Debi Haber  
Melissa Haber  
Hilda Hankins  
Sandra E. Harris  
Jane & George Hastings  
Karen & Michael Hojnowski  
Elizabeth & Gary Hopper  
Guy & Marion Horsley  
Mr. Dennis Lee Howard  
Wendall F. Howard  
Warren E. Hughes  
Nancy C. Hunter  
Suzette Hutchens  
Diane J. Hyra  
Earl Johnson  
Marshall B. Johnson  
Jenny Jolinski  
Ion S. & Angelika Jovin  
Winifred Warden Jude  
Charles Knight  
Lisa & Paul Kotula  
Dr. Audrey Landers  
Mr. & Mrs. Robert H. Large  
Justin Laughter  
Debby & Michael Lax  
Gene D. LeRosen  
Risa & Jay Levine  
Hortense Mitchell Liberti  
Sarah & Joe Marshall  
Lee & Peggy Martin  
Eric May  
Thomas & Nancy McCandlish  
Margaret & Bruce Mertens  
Susan J. Meyers  
Benita Miller  
Gail Miller  
Tom Mills  
Gerald & Sharon Milsky  
Constance Moe  
David Morgan  
Ed & Gloria Myers  
Kraig & Kim Negaard  
Peter Nelson  
Sylvia & Alan Newman  
Mr. & Mrs. William M. Noftsinger, Jr.  
Sandi Nogi  
Susan Nolan  
Peggy Norris  
Vilma Osmalov

Sharon Ott  
 James Overacre  
 Mr. Arthur Palmer  
 Sarah K. Parrish  
 Damon W. Pearson, AIA  
 Margaret Perkinson  
 Reid & Jamie Pierce  
 Mike & Melissa Radtke  
 Jackson E. Reasor  
 Lynne Hartman & David Redinbaugh  
 Eugenia S. Redmond  
 Dr. & Mrs. Laurie Rennie  
 Mr. & Mrs. Doug Riddell  
 Mr. & Mrs. Gregory B. Robertson  
 Charles Robinson  
 Janice Robinson  
 Pat Rooney  
 Toby Rosenthal  
 Carole Royall  
 Eileen & Thomas Sanders  
 Josef Schuessler  
 Mr. & Mrs. R. Strother Scott  
 Wayne Shields  
 Denise Simone  
 Hilary Borbón Smith  
 Susan Smyth  
 Mary Lou Sommar Dahl  
 Constance S. Sorrell  
 Claude & Mary Lou Stocky  
 Curt Straub  
 David & Georgia Tetrault  
 Robert Thomas  
 Richard & Paula Troxel  
 Howard M. Twilley  
 George Watkins  
 Reed & Terrie West  
 Sarah Jane Wetzler  
 John B. Wharton  
 Nanette & Richard Whitt  
 Ann L. Williams  
 Stacey Wilson  
 Suzanne P. Wiltshire  
 Joyce Winstead  
 Judy R. Winston  
 Mr. Ronald Witkowski  
 William & Patricia Young

**Company (\$50 - \$99)**

William L. Anderson  
 Anonymous  
 Charlotte Arnold  
 Brenda P. Bailey  
 John Ball  
 Rosanna Bencoach  
 Peter & Barbara Birch  
 Georgeann & Stuart Broth  
 Robert & Harriet Burch  
 Brian Kent Conner  
 George & Lucille Cralle  
 Cara David  
 Thomas and Lana Digges  
 Ruth H. Doumlele  
 Meg Downs  
 Laura Eastman  
 Katherine Fiedler  
 Leigh Gallalee  
 Julia Gamble  
 Ami B. Goldstein  
 Susan & James Green

Mary Gregory  
 Sue Griffin  
 Rick & Diane Hall  
 Susan Hallahan  
 Jackquelyn Harman  
 Johannah B. Harrison  
 Dr. and Mr. Patrick E. Held  
 Tanya Henderson  
 Rose & Sheldon Herold  
 Kathleen Hughes  
 Mr. & Mrs. E. R. Hutchinson, Jr.  
 Elizabeth & Andy Kerr  
 Robin E. Mapes  
 David J. Marchette  
 Kathleen Quick Martin  
 Ann Coleman Mastrotta  
 Don & Peg Mohar  
 Susan Montcastle  
 Adam T. Moore  
 Mr. William L. Motley, Jr.  
 Rita L. Nuckols  
 Ana Palaghita  
 Sandra G. Palkins  
 Nikki Parrish  
 Dominick Perez  
 Mark & Caryn Persinger  
 Charles & Julia Piper  
 Ann M. Prokopchak  
 Rose R. Reif  
 Bob & Jan Reynolds  
 Steven Saltzberg  
 Sheila H. Sencindiver  
 Jerry & Roseanne Shalf  
 Sheldon\* & Shirley Shapiro  
 Mary Ann Stana & Jack Allison  
 Josephine Strickler  
 Marla & Rob Stuebner  
 Patricia Stuart  
 Victoria Thomasson  
 Ashley Thompson  
 Jay Thompson  
 Robert Thompson  
 Bobby J. Thornburg  
 Mandy Tornabene  
 Rebecca Walsh  
 Dawn Ward  
 Kenneth Wayland  
 Jeff Wells  
 DeeDee & Phil White  
 Robert Wodarczyk  
 Danielle N. Wroblewski

**INSTITUTIONAL CONTRIBUTORS**

**Cornerstones (\$50,000+)**

Altria Group  
 CultureWorks & the Arts and Cultural Funding Consortium - supported by City of Richmond and the Counties of Hanover & Henrico  
 Dominion Energy  
 E. Rhodes & Leona B. Carpenter Foundation  
 Lettie Pate Whitehead Foundation  
 National Endowment for the Arts  
 The Shubert Foundation  
 Virginia Commission for the Arts

**Angels (\$25,000 - \$49,999)**

Atlantic Union Bank  
 Overton & Katharine Dennis Fund  
 Pauley Family Foundation  
 The Reinhart Foundation  
 The Community Foundation for a greater Richmond

**Producers (\$15,000-\$24,999)**

R.E.B. Foundation  
 Robins Foundation  
 Roy E. Burgess II Fund

**Directors (\$10,000-\$14,999)**

Arenstein Family Fund  
 Lewis & Butler Foundation  
 Genworth Foundation  
 PGA Tour Charities  
 Wilbur M. Havens Charitable Foundation

**Stars (\$5,000-\$9,999)**

Chrisman Family Foundation  
 Community Foundation of the Dan River Region  
 County of Henrico  
 Covington Travel  
 Lewis Insurance Associates  
 Virginia A. Arnold Endowment Fund

**Stage Managers (\$2,500-\$4,999)**

Estes Foundation  
 Kjellstrom & Lee, Inc.  
 Metropolitan Business League Foundation  
 NewMarket Corporation  
 PricewaterhouseCoopers LLC  
 Ruth Camp Campbell Foundation

**Community Builders (\$1,000-\$2,499)**

Feel Better RVA LLC  
 Fife Family Foundation  
 Kathryn & W. Harry Schwarzschild Fund  
 King & Spalding  
 Long & Foster  
 Rolfe Family Foundation  
 RSM US  
 Westminster Canterbury Richmond

**Co-Stars (\$500-\$999)**

Kingsbery W. & Carla C. Gay Family Fund  
 Loucks Family Foundation  
 The Micawber Foundation  
 Wegmans  
 Whisk, LLC

**Ensemble (\$250-\$499)**

Hunton Andrews Kurth LLP  
 Kroger  
 Wolfcreek Construction Co.  
 Walker Family Fund

\*Deceased



### **Curtain Raisers (\$100 - \$249)**

AmazonSmile Foundation  
Circle S studio  
The Hartford

### **Company (\$50 - \$99)**

United Way of Greater Richmond  
& Petersburg

## **IN HONOR & MEMORIAM**

Anonymous *in memory of Barbara Kincaid*  
Charlotte K. Arnold *in memory of Barbara Kincaid*  
Sally Bagley *in honor of Cal & George Jennison*  
Jerry & Patricia Bayer *in memory of Tom McGranahan*  
John Bryan *in honor of Emily Cole-Jones*  
Bob & Harriet Burch *in memory of Barbara Kincaid*  
The Estate of Agnes B. Cain *in memory of Raymond L. Brown, Jr. & Julia A. Brown*  
circle S studio *in honor of Cal & George Jennison*  
Mrs. Jamme Coy *in memory of Stephen C. Coy*  
Lou & George Cralle *in memory of Barbara Kincaid*  
Blair Curdts *in honor of Suzanne Pollard & Scott Wichmann*  
Donna Eastep *in memory of Barbara Kincaid*

Phyllis A. Errico *in memory of Audrey Errico*  
Mr. & Mrs. Robert B. Giles *in honor of Emily Cole-Jones*  
Rick & Diane Hall *in memory of Barbara Kincaid*  
John & Dawn Hall *in memory of Barbara Kincaid*  
Hilda Hankins *in honor of Laura Lee Chandler*  
Ralph & Jackie Harman *in memory of Thomas Wyeth Harman*  
Hugh & Nancy Harrison *in honor of Phil Whiteway & Bruce Miller*  
Hugh & Nancy Harrison *in honor of Emily Cole-Jones*  
Johannah B. Harrison *in memory of Barbara Kincaid*  
Catherine Stafford Hawkins *in memory of Barbara Kincaid*  
Debby & Michael Lax *in honor of Ric Arenstein*  
Mr. & Mrs. C. Glenn Miller *in memory of Curtis & Amy Miller*  
Sandi Nogi *in memory of Dr. Jay Nogi*  
Sarah K. Parrish *in memory of Alice Flowers*  
Ann M. Prokopchak *in memory of Barbara Kincaid*  
Robert & Beverly Pugh *in honor of Roxie Gates*  
Nadine Rapoza *in memory of Barbara Kincaid*  
Rose R. Reif *in memory of Barbara Kincaid*

Sheila H. Sencindiver *in memory of Barbara Kincaid*  
Elizabeth C. Shuff *in memory of Jessie Bogese*  
Mary Ann Stana & Jack Allison *in memory of Barbara Kincaid*  
Robert Thomas *in memory of Barbara Kincaid*  
Westminster Canterbury Richmond *in honor of Bruce Miller & Phil Whiteway*  
Roger & Barbara Whiteway *in honor of Phil Whiteway*  
Suzanne P. Wiltshire *in memory of Charles F. Wiltshire*

## **IN-KIND CONTRIBUTIONS**

Anne Britt  
Marge Bruning  
Margaret Doherty  
Bruce Kay  
Colleen Maitland  
Lawanna Stanton  
Linda Adams

## **MATCHING GIFTS**

Altria Client Services  
Dominion Energy  
The Hartford  
Total Quality Logistics

## **GIVING**

Like most professional nonprofit performing arts organizations, Virginia Rep relies on the generosity of our donors for over one-third of our annual operating revenue. Since our founding 70 years ago, donor support each season allows us to produce high-quality theatre productions for Virginia audiences of all ages, while addressing critical community needs through the power of live theatre.



See how donations are used, and please consider giving at [virginiarep.org/give.html](http://virginiarep.org/give.html) or scan this QR code with your phone ►



If you would like more information, contact Melissa Haber at 804-783-1688 x1263 or [mhaber@virginiarep.org](mailto:mhaber@virginiarep.org).

## GREAT STAGES CAMPAIGN DONORS

---

The following donors have made generous commitments to our **Great Stages Campaign** in support of the acquisition of the former Scottish Rite Temple as the new home of Virginia Rep Center for Arts & Education. With this facility, Virginia Rep is establishing a nationally prominent home for our programming for children, families, and schools. The list below reflects campaign gifts made through October 31, 2023. To learn more about the campaign, or to make a pledge, please contact Melissa Haber at (804) 783-1688 x1263.

Anonymous  
Rhona & Ric Arenstein  
Patricia Bedford  
Susie Stevens Bogese, Ally  
Ashcraft, & Mikey Bogese  
Brad & Jan Booker  
J. Read, Jr. & Janet Dennis Branch  
The Cabell Foundation  
Mr. J.P. Causey, Jr.  
Laura Lee & Ted Chandler  
Emily Cole-Jones & Robb Jones  
Bill Cooper  
Paige & Jason De La Cruz  
The Overton & Katharine  
Dennis Fund  
Donna T. Douglas  
E.B. Duff Charitable Lead  
Annuity Trust

Mary Butler Eggleston  
Tom & Brenda Eggleston  
George & Darlene Emerson  
William J. Ernst III  
Nancy Finch  
Craig & Trish Forman  
Don & Betsy Garber  
Nancy & Hugh Harrison  
Jane & Jim Hartough  
Cecil R. & Edna S. Hopkins  
Family Foundation  
Cal & George Jennison  
King & Spalding LLP  
Mr. & Mrs. Bruce A. Kay  
Dirk D. Lasater  
Meredith & Perry Miles  
Valerie A. Molnar & Yogi H. Singh  
The Monument Group

Moses D. Nunnally, Jr. Charitable  
Trust B  
The Mary Morton Parsons  
Foundation  
Carolyn & Bill Paulette  
Martha Quinn  
Ms. Martha Shickle  
Elizabeth C. Shuff  
Sheryl Smith  
Julie Toben  
Mandy Tornabene  
TowneBank Foundation  
Ms. Adrienne Whitaker  
The Windsor Foundation Trust  
Roller Bottimore Foundation

## QCD? RMD? IDK!

We aren't talking about Quality Character Development or Riveting Musical Drama, but **Qualified Charitable Distribution** and **Required Minimum Distribution**.

Did you know that if you are at least age 70½, these acronyms can help you save on your taxes through a gift to Virginia Rep?

To discuss a gift, or for more information, contact Melissa Haber at **(804) 783-1688 x1263**, or **mhaber@viriniarep.org**.



# SATCHMO

## AT THE WALDORF

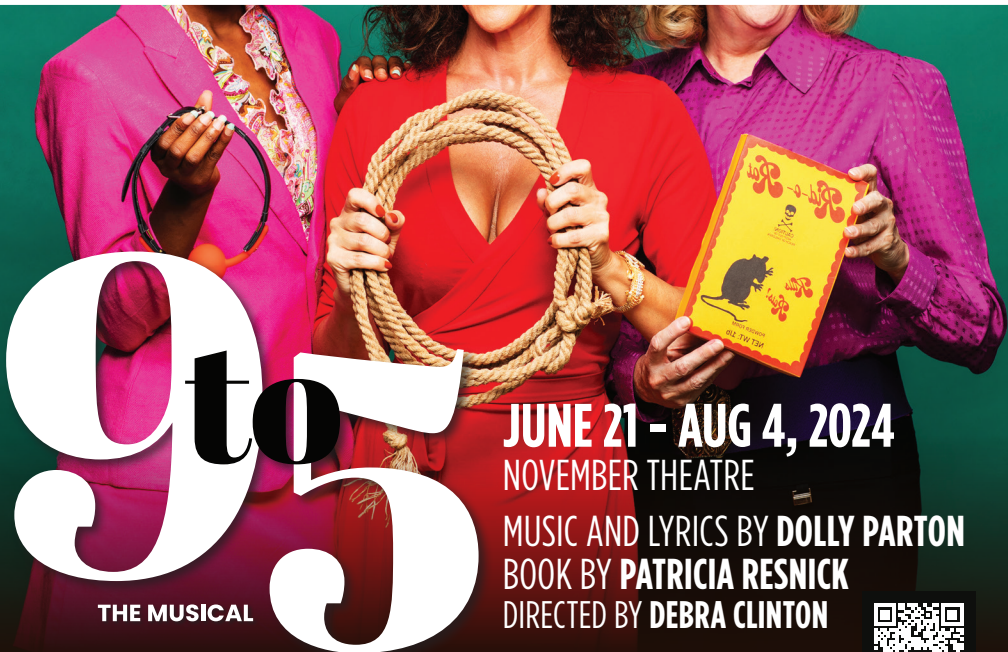
MAR 1 - APR 7, 2024  
NOVEMBER THEATRE

BY **TERRY TEACHOUT**  
FEATURING **JEROLD SOLOMON**  
DIRECTED BY **RICK HAMMERLY**



DON'T MISS THESE DOWNTOWN SHOWS  
804-282-2620 | [VIRGINIAREP.ORG](http://VIRGINIAREP.ORG)

VIRGINIA **rep**



# 9 to 5

THE MUSICAL

JUNE 21 - AUG 4, 2024  
NOVEMBER THEATRE

MUSIC AND LYRICS BY **DOLLY PARTON**  
BOOK BY **PATRICIA RESNICK**  
DIRECTED BY **DEBRA CLINTON**



**ON AIR****MARCH 15 -  
APRIL 14, 2024**  
HANOVER TAVERNMUSIC AND LYRICS BY  
**MATT CONNER**BOOK AND LYRICS BY  
**STEPHEN GREGORY SMITH**DIRECTED BY **TODD D. NORRIS**

Amidst the turbulent 1920's, Frank and Flora Conrad were on the edge of discovering mass radio broadcasting. These two unsung pioneers broke through the static and established the first radio station in America within their own unassuming garage in East Pittsburgh.

*ON AIR* follows their untold love story, their professional victories and disappointments, as well as their journey in establishing broadcast radio as a constant companion, messenger, and soundtrack for the life of every American.



ILLUSTRATION BY ROBERT MEGANCK