

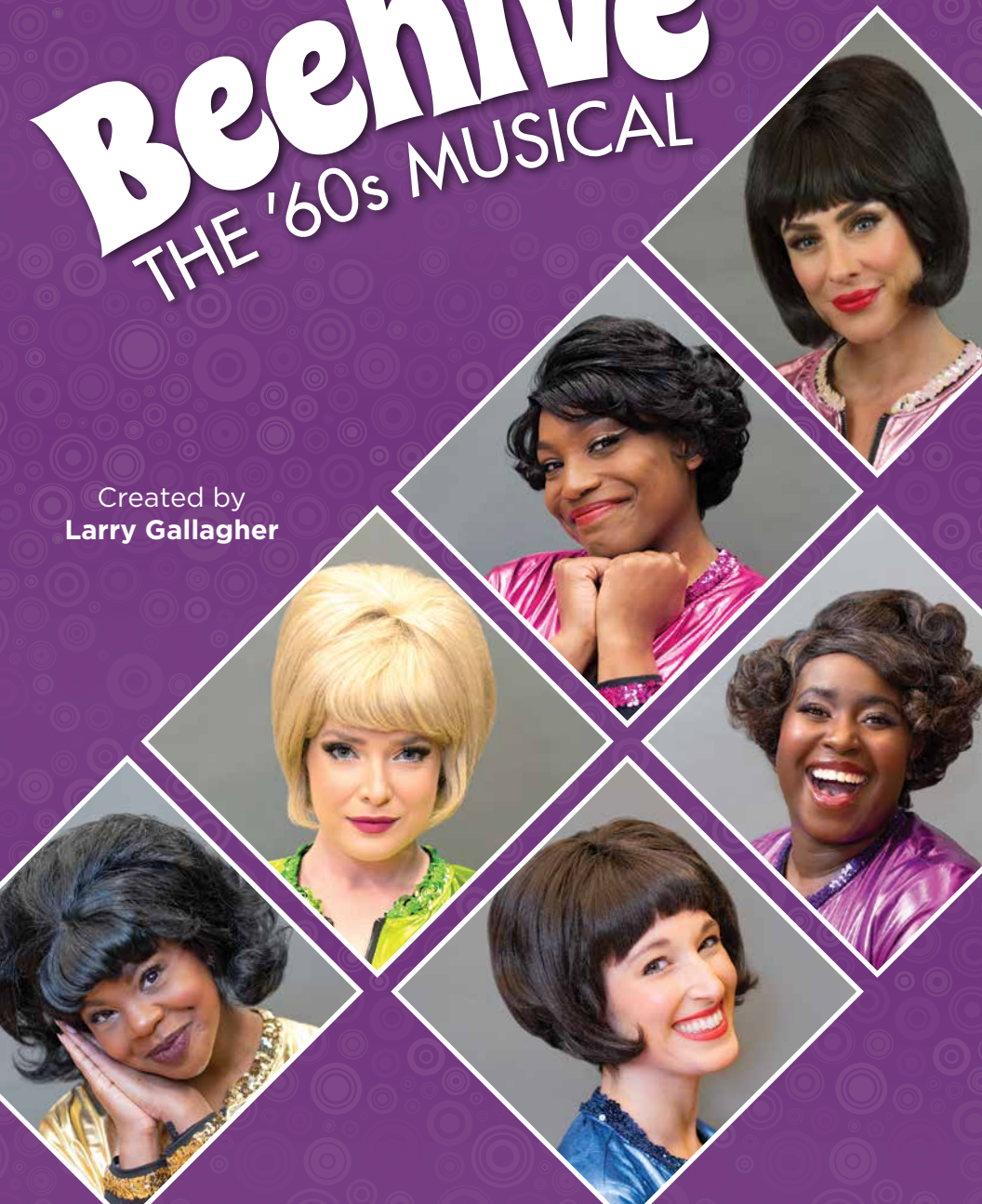
NOVEMBER THEATRE  
ARENSTEIN STAGE

VIRGINIA  
**rep**

# Beehive

THE '60s MUSICAL

Created by  
**Larry Gallagher**





**Valet in with us.**

Dine with us.

Stroll.

Take your seat.

Bravo!

Nightcap.

**Valet out with us.**

**Tarrant's, Max's,  
and Bar Solita  
make theatre easy.**



**Co-Artistic Director - Community** Desirée Roots  
**Managing Director** Phil Whiteway

VIRGINIA  
**rep**

# Beehive

## THE '60s MUSICAL

Created by  
**Larry Gallagher**

*"BEEHIVE" is presented through special arrangement with and all authorized performance materials are supplied by Theatrical Rights Worldwide, 1180 Avenue of the Americas, Suite 640, New York, NY 10036. [www.theatricalrights.com](http://www.theatricalrights.com)*

MUSIC DIRECTION

**Billy Dye**

CO-SCENIC DESIGN  
**Mercedes Schaum**  
**Amy Bale**<sup>o</sup>

COSTUME DESIGN  
**Sue Griffin**  
**Marcia Miller Hailey**

LIGHTING DESIGN  
**Lynne M. Hartman**<sup>+</sup>

SOUND AND  
PROJECTION DESIGN  
**Jacob Mishler**

STAGE MANAGEMENT  
**Hannah Hoffert**<sup>\*</sup>

WIG DESIGN  
**Kevin S. Foster II**

DIRECTION/CHOREOGRAPHY  
**Leslie Owens-Harrington**<sup>^</sup>

SEASON  
SUPPORT:



NATIONAL  
ENDOWMENT **ARTS**  
arts.gov



**THE SHUBERT**  
FOUNDATION INC.

E. Rhodes and Leona B.  
Carpenter Foundation



# CAST

---

Wanda ..... **Gianna Hurt**  
Pattie ..... **Madison Paige Buck**  
Alison ..... **Mallory Keene\***  
Laura ..... **Nicole Baggesen\***  
Jasmine ..... **Temperance Jones**  
Gina ..... **Awa Sal Secka\***

# ORCHESTRA

---

Piano/Conductor ..... **Shellie Johnson**  
Tenor Sax ..... **Deb Saidel**  
Trumpet, Tambourine ..... **Craig Taylor**  
Guitar ..... **Hannon D. Lane**  
Bass ..... **Mary Fender O'Brien**  
Drum Set ..... **Paige Miller**

# FOR THIS PRODUCTION

---

Assistant Stage Manager ..... **Katherine Swartzbeck**  
COVID Safety Manager ..... **Ginnie Willard**  
Deck/Fly Crew ..... **Jason Winebarger**  
Light Board Op ..... **Griffin Hardy**  
Follow Spot Operators ..... **Justice Craig, Gwen Ulich**  
Audio Engineer..... **Jacob Mishler**  
Wardrobe..... **Courtney Holmes, Audra Honaker, Patricia Mumford,  
Nora Ogunleye, Sheridan Parkinson, Hannah Story**  
Photographer ..... **Tom Topinka, Jason Collins, Aaron Suttan**  
Videographer..... **Austin Lewis**

The video or audio recording of this performance by any means is strictly prohibited.



^The Director is a member of the **STAGE DIRECTORS AND CHOREOGRAPHERS SOCIETY**, a national theatrical labor union.



\*Member of Actors' Equity Association, the union of professional actors and stage managers in the U.S.A.



+Member of USA, United Scenic Artists', local 829

° Original set design by Amy Bale.

## SPECIAL THANKS

---

Special Thanks to William Dye and Steve & Denise Williams for helping assemble a wonderful collection of memories in the form of '60s trivia for our pre-show enjoyment!

## THE SONGS

---

*The run time is 1 hour, 30 minutes, and there will be no intermission.*

### ***Round the Beehive / Lets Rock***

by Claudia Brevis

### ***The Name Game***

by Lincoln Chase and Shirley Elliston/EMI El Gallico Music/Used with Permission

### ***It's My Party***

by John Gluck, Walter Gold, Seymour Gottlieb, and Herbert Wiener/Warner Chappell Music, Inc./ASCAP/Used with Permission

### ***Where Did Our Love Go***

by Edward Holland, Lamont Dozier, and Brian Holland/Stone Agate Music, a division of Jobete Music Co. Inc./Used with Permission

### ***Come See About Me***

by Edward Holland, Lamont Dozier, and Brian Holland/Stone Agate Music, a division of Jobete Music Co. Inc./Used with Permission

### ***Walking in the Rain***

by Baby Mann, Phil Spector, and Cynthia Weil/EMI Music Publishing/Used with Permission

### ***I Sold My Heart to the Junkman***

by Leon Rene and Otis Rene/EMI Unart Catalog Inc./Used with Permission

### ***Academy Award***

by V. Catalano, A. Levinson, P. Alonso/EMI Unart Catalog Inc./Used with Permission

### ***I'll Never Change Him***

by Guy Hemric, Jerry Styner/Donna Dijon Music Publications/Used with Permission

### ***You Can't Hurry Love***

by Herbert Dozier, Brian Holland  
Eddie Holland/Stone Agate Music/  
Used with Permission

### ***Sweet Talkin' Guy***

by Doug Morris, Elliot Greenberg, Barbara Baer, & Robert Schwartz/Screen Gems - EMI Music Inc./Used with Permission

### ***My Boyfriend's Back***

by Richard Gottehrer, Robert Feldman, & Gerald Goldstein/EMI Blackwood Music Inc./Used with Permission

### ***Will You Still Love Me Tomorrow***

by Gerry Goffin and Carole King/  
Screen Gems - EMI Music Inc./  
Used with Permission

### ***One Fine Day***

by Gerry Goffin and Carole King/  
Screen Gems - EMI Music Inc./  
Used with Permission

### ***Where the Boys Are***

by Howard Greenfield and Neil Sedaka/  
Screen Gems - EMI Music Inc./  
Used with Permission

### ***Be My Baby***

by Jeff Barry, Ellie Greenwich, and Philip Spector/EMI Music Publishing/  
Universal Music Publishing Group/  
Used with Permission

### ***Then He Kissed Me***

by Jeff Barry, Ellie Greenwich, and Philip Spector/EMI Music Publishing/  
Used with Permission

***Baby I Love You*** by Jeff Barry, Ellie Greenwich, and Philip Spector/EMI Music Publishing/Universal Music Publishing Group/Used with Permission

## THE SONGS

---

**Beehive Dance** by Claudia Brevis/  
Used with Permission

**Abraham, Martin, and John**  
by Dick Holler/Regent Music Corp./  
Used with Permission

**You Don't Own Me**  
by John Madara and David White/  
Sony/ATV Music Publishing/  
Used with Permission

**Son of a Preacher Man**  
by John Hurley and Ronnie Wilkins/  
Sony/ATV Tree Publishing/  
Used with Permission

**To Sir with Love**  
by Don Black and Mark London/  
Screen Gems - EMI Music, Inc./Used  
with Permission

**British Invasion Cut Short**  
by J.C. Fogerty/Fourteenth Hour Music/  
Used with Permission

**River Deep Mountain High**  
by Jeff Barry, Ellie Greenwich, and Phillip  
Spector/Warner Chappell Music, Inc./  
Used with Permission

**Proud Mary**  
by J.C. Fogerty/Fourteenth Hour Music,  
Inc./Used with Permission

**Chain of Fools**  
by Donald Covay/Fourteenth Hour  
Music, Inc./Used with Permission

**Never Loved a Man (the Way That  
I Loved You)**  
by Ronnie Shannon/Fourteenth Hour  
Music, Inc.

**(You Make Me Feel Like)  
A Natural Woman**  
music & lyrics by Gerry Goffin,  
Carole King and Gerald Wexler/  
Used with Permission

**Somebody to Love**  
by Davney R Slick (aka Darby Slick)/  
Irving Music/Used with Permission

**Cry Baby**  
by Bert Berns and Norman Meade/  
Sony/ATV Music Publishing LLC,  
Warner Chappell Music, Inc./  
Used with Permission

**Try (Just a Little Bit Harder)**  
by Jerry Ragovoy and Chip Taylor/  
Warner Chappell/Used with Permission

**Me and Bobby McGee**  
by Kris Kristofferson and Fred Foster/  
EMI Blackwood Music, Inc./  
Used with Permission

**Make Your Own Kind of Music**  
by Barry Mann and Cynthia Weil/  
Screen Gems - EMI Music, Inc./  
Used with Permission

Sign up to get our Enews.

Visit [VirginiaRep.org](http://VirginiaRep.org) and click **Contact & News**

**FOLLOW US ONLINE!**



VAREPTHEATRE



@VIRGINIAREP



@VAREPTHEATRE

## COMPANY BIOS

---



**Jianna Hurt** (Wanda) is ecstatic to be part of the company of *Beehive: The '60s Musical!* This production is her debut at Virginia Repertory Theatre. Her love for musical theatre came shortly after she entered the Center for the Arts at Henrico High School. Her most recent credits include *Once Upon a Mattress* (Queen Aggravain) at John Tyler Community College, *Hairspray* (Motormouth) at CWorks, and *Addams Family* (Morticia) at Henrico High School. She would like to thank her parents, friends, family, and the cast and crew! She hopes that you will enjoy the show and dance with her again!



**Madison Paige Buck** (Pattie) is thrilled to be making her Virginia Rep debut! She received a B.A. in Musical Theatre and Opera from Temple University. A Lancaster, PA native, her favorite regional credits include: *Les Misérables* (Cosette/ Ensemble) with Arrow Rock Lyceum Theatre and Fulton Theatre, *Beehive* (Pattie) with Prather Productions, *Jekyll & Hyde* (Emma) with Prima Theatre, and *Crazy For You* (Polly Baker) with Candlelight Theatre. Additionally, Madison has performed as a Lead Vocalist onboard Holland America Cruise Line and at the American Music Theatre. Big thank you to Leslie and the exceptional Virginia Rep team, and endless love to her family and Ben. @madisonpaigeback | www.madisonpaigeback.com



**Mallory Keene** (Alison) is elated to be back on stage! Favorite stage credits include: *Sweeney Todd* (Johanna) and *Significant Other* (Kiki) at TheatreLAB; *A Chorus Line* (Val) at RTP; *Legally Blonde* (Serena ) at Fulton Theatre; *Mary Poppins* (Ensemble, u/s Mary), *Tuck Everlasting* (choreographer), *Polkadots: the Cool Kid Musical* (choreographer), *Sister Act* (Ensemble), *Beauty and the Beast* (Ensemble), and *Mame* (Ensemble) at Virginia Rep; *Nice Work if You Can Get It* (Jeannie) and *Mamma Mia!* at Virginia Musical Theatre. Proud graduate of Shenandoah Conservatory with a B.F.A. in Musical Theatre. She would like to thank Leslie, Billy, her family, fiancé, and friends for all their love and continuing support!



**Nicole Baggesen** (Laura) is thrilled to be back at Virginia Rep! She was last seen on stage at Riverside Theatre in one of her dream roles as Cassie in *A Chorus Line*. Broadway: *Urban Cowboy the Musical* (Love Levy/Sissy & Pam u/s). Tours: *West Side Story* (Rosalia). Regional: *Fosse* (Mein Herr & Big Spender), *Cabaret* (Sally Bowles), *The Drowsy Chaperone* (Chaperone), *Sweet Charity* (Charity), *Gypsy* (Tessi Tura), *Dirty Rotten Scoundrels* (Jolene), *La Cage aux Folles* (Jacqueline), *The Hot Mikado* (Peep-Bo), *Thoroughly Modern Millie*, *Dreamgirls*, *South Pacific* (Janet MacGregor), *Mame* (Sally Cato), *Lend Me a Tenor* (Diana) and *Harmony*. Choreography: *A Christmas Story* at Virginia Rep, *La Cage aux Folles*, *Thoroughly Modern Millie*, and *42nd Street*. Television: *Mercy Street* (PBS) and national commercials for companies such as Chivas Regal, Delta SkyMiles, and E\*Trade. Thanks to my husband, Randy Baggesen, Ava and Jack, Leslie Owens-Herrington, and my family at Virginia Rep!

## COMPANY BIOS

---



**Temperance Jones** (Jasmine) is from Birmingham, Alabama. At an early age, Temperance learned to appreciate musical theatre from her mother, an artist and arts educator. Temperance received her B.A. in Music from Belhaven University, with an emphasis in Musical Theatre. She has showcased her talent as a young artist in settings like International Performing Arts Institute, Bright Star Touring

Theatre, Opera Mississippi, RWS Entertainment Group, and Opera Birmingham. From a mother's inspiration to performing internationally, Temperance honors the legacies of the Black artists who came before her, and looks forward to the contributions she still has yet to make.



**Awa Sal Secka** (Gina) is grateful to be back on stage and making her debut at Virginia Rep! Recent roles include: *Simply Sondheim* (Self), *Gun and Powder* (Flo), *Jesus Christ Superstar* (Simon) at Signature Theatre; *Into the Woods* (Baker's Wife), *The Wiz* (Glinda), *Christmas Carol* (Mrs. Fred) at Ford's Theatre; *The Glorious World...* (Lady 3) at Center Stage; *School Girls...* (Ama), *Caroline, or Change* (Dottie) at Round House; *Me, Jane*

(Maisie) at Kennedy Center; *Dessa Rose Concert* (Dessa), *Children of Eden Concert* (Eve), *Avenue Q* (Ens) at Olney Theatre Center; *AIDA* (Aida), *MEMPHIS* (Felicia) at ArtCentric; *Cinderella* (Cinderella), *Charlie Brown* (Lucy Van Pelt) at Imagination; *James and the Giant Peach* (Sponge) at ATMTTC; *SILENCE!* (Ardelia) at Studio Theatre. She received her A.A. in Theatre Performance from Montgomery College. Upcoming works include her co-written play, *The Joy That Carries You*, at Olney Theatre Center, and *GODDESS* (Grio Trio) at Berkeley Rep. All thanks and love to God, her family and friends, and last but not never least, her partner, Ryan.

**Leslie Owens-Harrington** (Director/Choreographer) A Native of St. Louis Missouri, with a B.S. from Howard University, Washington, DC, is a seasoned choreographer with theatre, theme park, AMC and HBO movie credits, and over 30 years experience. She is a member of SDC, Stage Directors and Choreographers Society. Some of her musical theater credits include *Dreamgirls*, *Anything Goes*, *The Wizard of Oz*, *Cinderella*, *Godspell*, *You're A Goodman Charlie Brown*, and *Peter Pan*. Mrs. Harrington's Choreographer/Director credits include *Once on This Island*, *Smokey Joe's Café*, *Blues in the Night*, *Ragtime*, *Hairspray*, and *Joseph and the Amazing Technicolor Dreamcoat*, to name a few. Leslie is thankful for the many Phoebe and Richmond Theatre Critic Circle Awards for Best Choreography and/or Musical including *Once On This Island*, *Music Man*, *Color Purple*, *Dirty Rotten Scoundrels*, *Peter Pan*, *Beehive*, *All Night Strutt*, *They're Playing Our Song*, and *Caroline or Change*. God has Blessed her with a supportive family, and number one fan, Dr. Gary Harrington, her husband!

**Billy Dye** (Music Director) is thrilled to return to "the Hive" having offered music direction for three previous productions. He recently provided music direction, consultation, and original compositions for the Firehouse Theatre production of *Oedipus - a Gospel Myth*; has worked on productions of *Blues in the Night*, *The Taffetas*, *Pinkalicious*, and *Smokey Joe's Cafe*. He directed and wrote *Songs from the Soul* for Virginia Rep. Onstage credits include Virginia Rep's *The Color Purple* and *Dreamgirls*, and AART's *Crowns* and *Mahalia*. Other favorites include *Ain't*



## COMPANY BIOS

---

*Misbehavin'*, Schroeder in *You're a Good Man Charlie Brown*, Papa Ge in *Once On This Island*, Pish-Tush in *The Mikado*, Marshall in the world premiere of *Four-Part Harmony*, and Eubie Blake in the world premiere of Charles Strouse's *Bojangles*. He is proud to serve on the faculty of Henrico High Schools' Specialty Center for the Arts where he teaches musical theatre. Billy is excited for the upcoming world premiere musical for which he has been serving as music director. Listen out for the new Ron Klipp musical, *Gabriel* scheduled to open this summer at Firehouse Theatre. He is most thankful for a supportive family. THANKS!... for keeping dinner warm and for love, support, and patience.

**Mercedes Schaum** (Co-Scenic Designer) is thrilled to be back designing for Virginia Rep. She's been designing and painting in Richmond for 20 years. Her credits include *Annie*, *Honk!*, *A Christmas Story*, *Mame*, *The BFG*, *Song of Mulan*, *Into the Woods*, *Hay Fever*, *The Drawer Boy*, *The Magic Flute*, and so many more for Virginia Rep. *The Marriage of Figaro*, *The Magic Flute*, *The Merry Widow*, and others for VCU Opera. Most recently *Peter and The Starcatcher* and *Little Shop of Horrors* for SPARC, *Times Square Angel* for Richmond Triangle players, and *Daddy Long Legs* for Swift Creek Mill Theatre She has a B.F.A. from JMU in theatre and an M.F.A. in set design from University of Illinois. When she's not working in the theatre, Mercedes is raising four kids, helping design restaurants with her husband, Jason Alley, and looking for new challenges.

**Sue Griffin** (Costume Co-Designer) has headed up the Virginia Rep costume department for the last eighteen years. Over this time, the shop has produced costumes for more than 300 shows, from traveling fairy tales to major musicals. With the help of the full time shop, hundreds of costumes, wigs, shoes and hats are sent out on a stage or packed up on tour. Some of the most memorable shows include *1776*, *Dirty Rotten Scoundrels*, *The Color Purple*, *The Curious Incident of the Dog in the Night-Time*, and *A Gentleman's Guide to Love and Murder*.

**Marcia Miller Hailey** (Costume Co-Designer) has been working in Richmond theatres for over 30 years, and now currently works in the costume shop at Virginia Rep as a Cutter/Draper. Some of her favorite shows she designed for Virginia Rep include *Forever Plaid*, *Erma Bombeck: At Wit's End*, *Miracle on South Division Street*, *Charitable Sisterhood*, *Charitable Sisterhood Christmas Spectacular*, *Last of the Red Hot Lovers*, and *Boeing Boeing*. She has also worked for the Richmond Ballet, Virginia and Utah Shakespeare Festivals, and Royal Caribbean Cruise Lines.

**Kevin S. Foster II** (Wig Designer) Kevin is excited to be "wiggling out" once again at Virginia Rep. Other design credits at Virginia Rep include *A Doll's House, Part 2* and *It's A Wonderful Life: A Live Radio Play*. Kevin's regional design credits include *I Hate Hamlet* at The Maltz Jupiter Theatre; *Hedwig and the Angry Inch* at Post Theatre Company, Rodger and Hammerstein's *Cinderella* at The Fulton Theatre; *Shrek Jr.* and *Jersey Boys* at Maine State Music Theatre; *Cindy Reilly* and *Pippi Longstockings* at The Peterborough Players; *Our Town* at Virginia Stage Company; *Biloxi Blues*, *Hello Dolly!*, and *9 to 5* at The Fort Lee Theatre Company. He creates custom commissions for female impersonators both locally and around the country, and also has been tasked with redesigning hair for Richmond's Legendary Santa. He holds a B.A. in Performance from Virginia Tech. His wig design Instagram and TikTok: @wigsbykevin. www.kevinsfosterii.com

## COMPANY BIOS

---

**Lynne M. Hartman** (Lighting Designer) Virginia Rep designs include *A Raisin In The Sun*, *Beauty and The Beast*, *Gypsy*, *Mame*, *Other Desert Cities*, *Shrek!*, *The Music Man*, *Red*, *The Producers*, *Dirty Rotten Scoundrels*, *Spring Awakening*, *Legacy of Light* (2011 RTCC Award), and *The Sound of Music* (2010 RTCC Award). Based in Norfolk, Lynne's designs for Virginia Stage Company include *Hold These Truths*, *Dear Jack Dear Louise*, *Pride and Prejudice*, *Venus In Fur*, *All My Sons*, *Taming of the Shrew*, *Honky Tonk Angels*. In Richmond — TheatreVirginia, CenterStage, Richmond Ballet, Carpenter Science Theatre Co., and Dogwood Dell among others. Regional credits include Company of Fools, Virginia Shakespeare Festival, The Lost Colony, McCarter Theatre, Kings Dominion, Carowinds, and Porthouse Theatre. Member: USA, Local 829.

**Jacob Mishler** (Sound and Projection Designer) has been involved in live production for 25 years, moving into theatrical sound design in 2004. Most recently, Jacob's work was heard in Virginia Rep's production of *A Doll's House, Part 2*. Other selected sound design credits include: *42nd Street* - Palace Theatre New Hampshire; *Cabaret*, *Rent*, *The Drowsy Chaperone* - Dutch Apple Dinner Theatre; *Gypsy* (Broadway World Award Central PA), *Woman in Black*, *Ghost* (World Premiere), *Million Dollar Quartet* - Fulton Theatre; *The Curious Incident of the Dog in the Night-Time*, and *The Bridges of Madison County* (Henry Award) - Fine Arts Center. Love to Julie.

**Hannah Hoffert\*** (Stage Manager) is thrilled to be a member of the *Beehive* team! She is a proud alumna of Carnegie Mellon University, receiving her B.S. ('16) and M.S. ('17) in Mechanical Engineering, with a Drama Production Technology and Management minor. Hannah is currently a resident stage manager at Cadence Theatre Company and a freelancer across Richmond, recently working with the Illuminated Stage Theatre Company, River City Community Players, SPARC, and Virginia Voice. Sending a special thank you to the family and mentors that helped to make this dream into a reality!

**Larry Gallagher** (Author) created and directed the original production of *BEEHIVE*, presented at Sweetwaters in New York City. Prior to *BEEHIVE*, Mr. Gallagher wrote and directed the hit musical revue *Ain't No Mountain High Enough*, which received unanimous critical praise.



### YOUR LOCAL COFFEEHOUSE

Coffee  
Breakfast  
Lunch  
Desserts  
Cocktails

[liftcoffeeshop.com](http://liftcoffeeshop.com)

ONLY 1.5 BLOCKS  
WEST OF THE THEATER  
218 W. BROAD STREET

## LEADERSHIP



### **DESIRÉE ROOTS**

*Co-Artistic Director  
- Community*

Desirée has showcased her triple threat talent for over 35 years as an active member of the Gospel,

Jazz, and Theatre scenes regionally, nationally, internationally, and in Richmond, VA where she grew up. She started singing in church when she was four, and started her professional theatrical career at age 13. Growing up in a musical family, it was only natural that she follow in her performing parents' footsteps.

Desirée has performed throughout the East Coast with orchestras, jazz ensembles, and as leader of her own ensembles. She's been the opening act for internationally renowned artists including Boney James, Brian McKnight, the late Phyllis Hyman, and B. B. King. She is a Grammy nominated recording artist and has produced shows she wrote including *Ella@100* in honor of the First Lady of Jazz, Ms. Ella Fitzgerald's 100th birthday. She received the Theresa Pollak award for "Vocal Excellence" in 2014.



### **PHIL WHITEWAY**

*Managing Director*

Phil is a key leader in Virginia's nonprofit arts management community. He co-founded Theatre IV in 1975 as Virginia's first

professional theatre for young audiences. In 2001, he assumed the role of Managing Director of Barksdale Theatre. In 2012, he provided staff leadership as Theatre IV and Barksdale merged to form Virginia Rep, Central Virginia's flagship professional theatre. Under his management, Phil's companies have received the first *Excellence in Instruction Award* from the Virginia Board of Education, the *Dominion Shining Star Award* from Virginians for the Arts, and the *50 for 50 Arts Inspiration Award* from the Virginia Commission for the Arts.

Phil was a founding member of the boards of the Richmond Arts Consortium and the Broad Street

Association. Along with performing, Desirée has had a long standing career in the corporate and nonprofit sectors. Upon receiving her B.A. from Virginia Union University, she initially embarked on a teaching path. This quickly evolved into other opportunities such as a Programming Manager for Richmond Jazz Society, Inc., Booking Manager for Downtown Presents (now Venture Richmond), and client liaison for Drake Beam & Morin, a Fortune 500 corporation. She has also been an educator and music facilitator privately and within the Henrico and Richmond Public school systems for over 20 years.

Desirée began her association with Virginia Rep as a high school intern when the company was Theatre IV with the unique mission "to seek national-caliber excellence equally in four areas: the arts, education, children's health, and community leadership."

These four pillars of service are what drew her to become *Co-Artistic Director - Community* — "working with the theatre company I love to serve the community I love."

Association. Under his staff leadership, Theatre IV purchased and renovated our historic November Theatre, receiving the *Community Builders Award* from the Central Richmond Association for its contribution to downtown revitalization. Phil is a graduate and past board member of Leadership Metro Richmond. He has served on the Governance Board of Partners in the Arts and as treasurer of Virginians for the Arts.

Phil has received the *Voice of the University Award* from his alma mater (University of Richmond), the Theresa Pollak "Lifetime Achievement Award" from *Richmond Magazine*, and the *Governor's Award for the Arts* from Tim Kaine. In 2000, Phil was included by *Style Weekly* among the "100 Most Influential Richmonders of the 20th Century."

Phil consults on arts management both locally and nationally. He is forever grateful for the love and support of his wife, Donna, and their four adult children—PJ, Jennings, Alex, and Gordon.

## VIRGINIA REP STAFF

**Co-Artistic Director - Community** . . . . . **Desirée Roots**

**Director of Production** . . . . . **Bruce Rennie**

Technical Director . . . . . Thomas Hawfield  
 Lead Carpenter . . . . . Chris Foote  
 Carpenter . . . . . Joel Ernst  
 Carpenter . . . . . Andrew Huelskoetter  
 Carpenter . . . . . Liz Murphy  
 Custodial Services . . . . . Tim Bethea

**Production Manager** . . . . . **Ginnie Willard**

Lighting Supervisor/Resident Lighting Designer . . . . . BJ Wilkinson  
 Electrician . . . . . Joel Ernst  
 Audio Visual Supervisor/  
 Resident Sound Designer . . . . . Jacob Mishler  
 Props Supervisor . . . . . Caroline Calhoun  
 Scenic Charge Artist . . . . . Amy Sullivan  
 Scenic Artist . . . . . Diane Zimmerman  
 Production Apprentice . . . . . Katherine Swartzbeck

**Director of Costumes** . . . . . **Sue Griffin**

Cutter/Draper . . . . . Marcia Miller Hailey

**Director of Tour Operations** . . . . . **Eric Williams**

Tour Manager . . . . . Gordon Bass  
 Company Manager . . . . . Donna Warfield  
 Arts in Education Manager . . . . . Amber Martinez  
 Tour Apprentice . . . . . Jessica Jaffe

**Managing Director** . . . . . **Phil Whiteway**

**Assoc. Managing Director** **Tracy K. Coogle, CPA**

Human Resources Manager . . . . . Lisa Kotula  
 Executive Assistant . . . . . Jessi Johnson Peterson  
 Education Manager . . . . . Irene Kuykendall  
 Education Associate . . . . . Daniel Daigle  
 Archive and Admin. Assoc. . . . . Austen Weathersby

**Director of Development** . . . . . **Emily Cole-Jones**

Annual Fund & Grants Coord . . . . . Melissa Haber  
 Events . . . . . Belles and Whistles

**Director of Communications** . . . . . **Liz Nance**

Director of Group Sales . . . . . Mark Persinger  
 Web Manager . . . . . Jessica Printz Daugherty  
 Graphic Designer . . . . . Druanne Cummins  
 Marketing Associates . . . . . Kylee Márquez-Downie,  
 Madison Cox  
 Box Office Manager . . . . . Janine Serresseque  
 Assistant Box Office Manager . . . . . Shannon Frazier  
 Box Office Associates . . . . . Sam Cook, Grace Coté,  
 Rod Easter, Rachel Weatherby

**Founding Producer** . . . . . **Bruce Miller**

**Controller** . . . . . **Regina Rudolph, CPA**

Accountant . . . . . Emily Bless  
 Accounting Associate . . . . . Sara Heifetz  
 External Auditor . . . . . Pilc & Moseley

**DAS RHEINGOLD**  
 Wagner | Sept 2021 at **TOPGOLF**

**THREE DECEMBERS**  
 Heggie | Jan/Feb 2022

**LA BOHÈME:**  
 RODOLFO REMEMBERS  
 Puccini | Nov 2021

**THE MARRIAGE OF FIGARO**  
 Mozart | Mar/Apr 2022

*Virginia Opera*  
 vaopera.org

## OUR MISSION

Our Mission: To entertain, challenge and uplift our communities through the power of live theatre.

## BOARD OF DIRECTORS

**Laura Lee Chandler** – *Chair*

**William H. Carter** – *Chair Elect*

**Jeffrey M. Gallagher** – *Immediate Past Chair*

**Amanda Tornabene** – *Corporate Secretary*

**Jay Payne** – *Treasurer*

**Adrienne P. Whitaker** – *IDEA Officer*

Brad Armstrong

Brad H. Booker

William S. Cooper, Jr.

Jason De La Cruz

Donna T. Douglas

Mary Butler Eggleston

Cliff Fleet

Trish Forman

Donald B. Garber

Kyle R. Grinnage

Nancy M. Harrison

Martha Heeter

Bruce A. Kay

Dirk D. Lasater

Carmella Maurizi

Meredith Miles

Carolyn Paulette

Damon W. Pearson

Martha Quinn

Christopher S. Reina, PhD

Gail C. Ridgeway

Yogi H. Singh

## VIRGINIA REPERTORY THEATRE ADVISORY COUNCIL

Ric Arenstein

J.P. Causey, Jr.

Josée Covington

Dr. Barbara Glenn

Dr. Monroe E. Harris, Jr.

M. Addison Jones, Jr.

J. Theodore Linhart

Dominic Madigan

Carter M. Reid

Dr. Terrie H. Scheckelhoff

Charlie Whitaker

Steven R. Williams

## VIRGINIA REPERTORY THEATRE

114 West Broad Street; Richmond, VA 23220

Administration: 804-783-1688 Box Office: 804-282-2620

VIRGINIAREP.ORG



## Virginia Repertory Theatre's History of Action in Support of Racial Equity

Since its founding as Barksdale Theatre (1953), Virginia Rep has maintained a steadfast commitment to racial equity. We proudly acknowledge the roles of our audience, artists and Boards in this hard-won legacy of progress toward inclusion, diversity, equity and access.

- 1954** In partnership with VUU, and in open defiance of Virginia's Jim Crow Laws, Barksdale welcomes Virginia's first fully integrated audience since Reconstruction.
- 1968** Barksdale casts Carl Lester as Persil-le-Noir in *Irma La Douce*, marking RVA's first hiring of a Black actor in a major supporting role, not as a servant, in a major theatre.
- 1973** To critical acclaim and sold-out houses, Barksdale stages Lorraine Hansberry's *To Be Young, Gifted and Black* as RVA's first major production focusing on Black experience.
- 1975** Theatre IV's founding mission commits to excellence in "four equal areas: the arts, education, children's health and community leadership," putting EDA front and center.
- 1978** Barksdale welcomes a guest production of *The River Niger*, a realistic family drama firmly rooted in contemporary Black experience — another first.
- 1980** Theatre IV places *A Raisin in the Sun*, staged by Black director Amini Jahari, in its inaugural season — again, a first. In subsequent seasons, we produce 42 additional mainstage shows focusing on Black or Latin experience.
- 1981** Theatre IV produces its first touring instructional play based on Black History, *Bound for Freedom*, casting Tony Cosby, Kelvin Davis and Eloise Libron in its resident touring company. In subsequent years, we create 12 additional Black History instructional titles, touring them to schools statewide and nationally.
- 1986** Theatre IV purchases and renovates the historic Empire Theatre, formerly the Booker T, as our permanent home.
- 1997** Martha Gilbert elected President of the Theatre IV Board of Directors, the first Black Board President of a major nonprofit arts organization in Virginia.
- 2002** Theatre IV presents *Buffalo Soldier* as the first professional theatre production to be staged in the Pentagon, as a morale booster following 9/11.
- 2009** Barksdale and Theatre IV jointly stage Virginia's first Hispanic Theatre Festival.
- 2020** Virginia Rep Board creates IDEA Committee: Inclusion, Diversity, Equity, Access.
- 2021** Katrinah Carol Lewis named Interim Co-Artistic Director, followed by the permanent appointment of Desirée Roots as Co-Artistic Director of Virginia Rep.

The rest of Virginia Rep's Social Justice efforts, including our Anti-Racism Statement, can be found on our website at [va-rep.org/anti-racism.html](http://va-rep.org/anti-racism.html).

# THANK YOU DONORS!

---

We thank the many individuals and institutional funders who have made charitable contributions in the past year. The following lists reflect contributions to our annual operating fund between March 1, 2021 - February 28, 2022. If you would like to join these supporters by donating to our nonprofit theatre, please visit [www.virginiarep.org](http://www.virginiarep.org) to **DONATE NOW** or mail your contribution check to Virginia Repertory Theatre, 114 West Broad Street, Richmond, VA 23220. Corrections to this list or questions about donating should be directed to our Development Office at (804) 783-1688 x1263.

## INDIVIDUAL CONTRIBUTORS

---

### Angels (\$25,000+)

Anonymous  
William & Josée Covington  
Pete Low

### Producers (\$15,000 - \$24,999)

Mary Butler Eggleston  
Tom & Brenda Eggleston  
Gonzalee Ford  
Don & Betsy Garber  
Bill & Carolyn Paulette

### Directors (\$10,000 - \$14,999)

Orran & Ellen Brown  
Jeff Gallagher & Catherine Howard  
Hugh & Nancy Harrison  
George & Cal Jennison  
Frances Lewis  
Mr. & Mrs. Andrew Lewis

### Stars (\$5,000 - \$9,999)

Mr. & Mrs. James Carreras, Jr.  
J.P. Causey, Jr.  
Mrs. Jammie Coy  
Anne Garland Farrell  
Margaret R. Freeman  
Mr. & Mrs. Thomas F. Garner, Jr.  
Dr. & Mrs. William V. Garner  
Jim & Jane Hartough  
Jeff & Mary Ann Markunas  
Perry & Meredith Miles  
Bruce & Terrie Powers Miller  
Mrs. Suzanne C. Pollard  
William L. Reinhart  
Bill & Sallie Thalhimer

### Stage Managers (\$2,500 - \$4,999)

Ted & Laura Lee Chandler  
Ms. Carrie T. Galeski  
Robert & Lynne L. Glasser  
Stephen & Cheryl Goddard  
Chris & Cheryl Guedri  
Gloria Mae Hintz  
Bruce & Janet Kay  
Judith & Mary O'Brien  
John & Karen Palen  
Peter Pastore  
Jay & Casey Payne  
Martha Quinn  
Barry & Gail Ridgeway  
Ms. Margaret R. Thomas  
Jim & Bobbie Ukrop  
Phil & Donna Whiteway

### Community Builders (\$1,000 - \$2,499)

Rev. Vienna Cobb Anderson  
Brad Armstrong & Frazier Millner  
Mr. Richard L. Beadles  
Roger & Anne Boeve  
Brad & Jan Booker  
Matthew & Heather Boyce  
Douglas W. & June M. Burks  
Dr. John B. H. Caldwell  
Elizabeth (Lee) Camp  
Dean & Jewel Caven  
James & Amy Jane Cohen  
Mary Ann Curtin  
Carolyn A. Davis  
Drs. Mark & Georgean DeBlois  
M. Joe Doran  
Donna T. Douglas  
Cliff Fleet & Fran Zemmell  
Craig & Trish Forman  
Paul Galanti  
Thomas S. Gay  
Vernon & Barbara Glenn  
Anne R. Gray  
Kyle Grinnage  
Brian & Liz Haney  
Catherine C. Harlow  
Dr. & Mrs. Gary C. Harrington  
Dave & Sharon Johannas  
Michael & Bevin Kehoe  
James Klaus  
Mr. & Mrs. Joe Knox  
Ken & Kathy Lemelin  
Betty Ball Mann  
Upton S. & Ann S. Martin III  
Chris & Robin Nagle  
Allen & Diane Neergaard  
Terry & Linda Oggel  
Kathleen Patenaude  
Patsy K. Pettus  
Ed & Alice Rivas  
Robert & Cindy Rolfe  
David & Linda Rose  
John & Barbara Rose  
John Rupp  
Joe & Virginia Sandford  
Larry Schwartz & Anne-Marie Irani  
Alfred & Meredith Scott  
Rob & Tara Seward  
Larry & Matilda Shifflett  
Yogi H. Singh  
Ted & Pam Soto  
Paul & Nancy Springman  
Dennis Strawderman & Family  
Mandy & Billy Tornabene  
Ted & Katie Ukrop

Anna F. Whiteway  
Roger & Barbara Whiteway  
S.R. & Amy M. Williams  
Wil & Helen Zuelzer

### Co-Stars (\$500 - \$999)

Emily Cole-Jones & Robb Jones  
Bill Cooper  
John & Susan Davenport  
David Fauri  
Steve & Julee Fletcher  
Mary & David Frediani  
Lisa Freeman  
Bill & Mary Garrison  
Mr. & Mrs. Robert B. Giles  
Joann H. Grayson  
Patricia Hackler  
Shep & Cynthia Haw  
Michael Hopkins  
Ron Howard & Les Lewis  
Rev. & Mrs. Charles Hunt  
Claire C. Kaugars  
Patrick Kelly  
Morris & Jane Logan  
Thomas & Nancy McCandlish  
Read & Cathy McGehee  
Arlene McLaren  
Mr. & Mrs. C. Glenn Miller  
Ellen A. Moseley  
Kelly & Christy O'Keefe  
Mr. & Mrs. Kenneth G. Pankey  
Douglas H. Pick  
Bob & Jan Reynolds  
Ronny & Barbara Robertson  
Dick & Sandi Shirey  
Martha V. Singdahlsen  
Griff & Cathy Surowka  
Richard & Ruth Szucs  
Ivan Trittipoe  
Mr. & Mrs. Robert J. Van Sickle  
Mr. Edward Villanueva  
Mrs. Jeanette Welsh  
Roger C. & Sandra H. Wiley  
Dr. Leanne Yanni  
Buddy & Mary Lynn Young

### Ensemble (\$250 - \$499)

Mr. & Mrs. John G. Adamson  
Dr. & Mrs. Robert A. Adler  
Anonymous  
Ric & Rhona Arenstein  
Dr. & Mrs. Ronald Artz  
Mr. & Mrs. Frank B. Atkinson  
Robert & Sandra Balster  
William H. Bays  
Jean T. Bear

Ron Bell  
John & Peggy Borgard  
Debra Bradshaw  
Ben & Zoe Bunnell  
Susan Y. Claytor  
Rich & Fran Contreras  
Donna Copley & Janet Inwood  
David & Carolyn Crighton  
Rebecca Chandler  
Ed & Nancy Deane  
Anne M. Dobson & Timothy S. Baird  
Betty Ann Dillon  
William Dunbar  
Larry & Mary Kathryn Eck  
Howard & Leigh Ann Feller  
Steven Farber & Ann Jewell  
Laura Finch & Brian Cassel  
Mr. & Mrs. George\* Flowers III  
Mike & Susan Gracik  
Laura Greer  
Sue Griffin  
Michael & Susan Haubensstock  
Sara Hillgrove  
Harry & Katherine Hoke  
Barry & Ann Kahan  
Ron & Ann Klipp  
Judith E. Knode  
Dirk Lasater  
Steven & Marci Linas  
Lee & Peggy Martin  
Mr. Richard Martin  
Gerald Moreno  
David Morgan  
Kraig & Kim Sandera  
Ann Nichols-Casebolt  
Wade Ogg  
Edson & Sharon Pederson  
Robert & Beverly Pugh  
Dr. Christopher Reina & Tell Carlson  
Bradley A. Ridlehoover  
Robert & Lucinda Ritter  
Mr. & Mrs. James E. Ryan, Jr.  
Eileen & Tom Sanders  
Jay & Lynn Schwartz  
Brooke & Susan Smith  
Jane Sper & Pat Miller  
Eugene & Lois Trani  
Howard Twilley  
Patricia Vastano & Dennis  
Lieberman  
Francis M. Watson III  
Mark Werner  
Nanette & Richard Whitt  
Ann L. Williams  
Mary A. Wilson  
Suzanne P. Wiltshire  
Marshall & Stephanie Wishnack  
Rick & Lane Witthoefft  
Elizabeth Woods  
Cheryl Yancey

**Curtain Raisers (\$100 - \$249)**  
Judith T. Abruzese  
Carl R. & Darlene Z. Ackerman  
Anonymous  
Connie Armstead  
Sally Bagley  
Ron Barnett  
David & Susan Beach  
Katherine Beard  
Brenda Beck  
Martin Beekman & Dorothy Tarleton  
Mr. & Mrs. Anthony J. Bell, Jr.  
Dr. Stephen H. Bendheim  
Sarah Bettinger  
Steven & Claudia Biegler  
Peter & Barbara Birch  
Elizabeth Blair  
Allen Blessing  
Richard & June Bohrer  
Ms. Eugenia H. Borum  
Vic Bouril & Joanne Barreca  
Charles & Helen Brewer  
Stuart Broth  
Stan & Martha Brown  
Mr. & Mrs. Brian L. Carr  
Steve Chafin  
Mr. & Mrs. Wes Clark  
Becky Clarke  
Cynthia Coco  
Alan & Frona Colker  
Linda Cooke  
Belinda C. Friday  
Mr. David Crank  
Robbie Crockett  
Mr. Ralph R. Crosby, Jr.  
Gerald Cummings  
Blair Curdts  
Judith Cutting  
Robbie Daniel  
Cynthia Donnell  
Theresa Duffey  
Dr. & Mrs. Michael Edelstein  
Craig Enevoldsen  
Martin Erb & Hope Armstrong Erb  
Lewis & Gena Farinholt  
Mary E. Farrell  
Drs. Robert & Marcella Fierro  
Frederick Fisher  
Margaret Friedenberg  
Jack & Mary Frye  
Sally Gerdes  
Sherwin Ghaphery  
Larry & Brenda Gilman  
Margaret Goebel  
Ralph & Jocelyne Graner  
Katharine Gray  
Bill & Kathy Groves  
Steve Haerbig  
Karen Halvorsen  
Elliott & Terrell Harrigan  
Lynn Hartman & David Redinbaugh  
Tom & Donna Hennessy  
Genevieve Hildebrand  
Jeb & Becky Hockman  
Mike & Karen Hojnowski

Elizabeth & Gary Hopper  
Walter & Geraldine Howard  
Em & Kathy Hughes  
Suzette Hutchens  
Diane Hyra  
Gail & Bob Jansen  
Marshall Johnson  
Dr. Miles F. Johnson  
Addison & Jessica Jones  
Dennis & Judy Jones  
Ion Jovin  
Stan & Barbara Joynes  
Dr. & Mrs. W. Wayne Key, Jr.  
Dr. & Mrs. Barry V. Kirkpatrick  
Sid & Bev Koerin  
Dr. Audrey D. Landers  
Mr. & Mrs. Robert H. Large  
Dr. Daniel M. Laskin  
Justin M. Laughter  
Steve & Sharon Lehman  
Jay & Risa Levine  
Dr. Augustine Lewis & Elizabeth  
Christeller  
JoAnn Lindstrom-Gibbens  
Mr. & Mrs. A. John Lucas  
Shawn & Dee Majette  
Paula Makielski  
Robin Mapes  
Carol Martin  
Tom & Donna McClish  
Connie McHale  
Mr. & Mrs. C. Q. Meadows  
Bruce & Margaret Mertens  
Susan J. Meyers  
Gail Miller  
Don & Peg Mohar  
Sue F. Munro  
Karen Nelson  
Ian A. Nimmo  
Mr. & Mrs. William M. Noftsinger, Jr.  
Sandi Nogi  
Ken & Karen Olshansky  
Karen & Jeff Omohundro  
Vilma Osmalov  
Sharon Ott  
Sandra Palkins  
Arthur Palmer  
Melinda F. Parker  
Sarah K. Parrish  
Damon Pearson  
Gwen Peters  
Robert Dean Pope  
Pamela Putney  
Ervin & Mary Ann Reid  
Dr. & Mrs. Laurie E. Rennie  
Mr. & Mrs. Doug Riddell  
Mr. & Mrs. Gregory B. Robertson  
Patricia Rooney  
Connie Rose  
Krista Scoggins  
Mr. & Mrs. R. Strother Scott  
Sandra Shaw  
Joe & Cindy Shearin  
Wayne Shields  
Dean & Valarie Shostak



Ms. Mary Jo Sisson-Vaughan  
Ann Sledge  
Steve & Nancy Snyder  
Mary Lou Sommar Dahl  
Tom & Jean Stevens  
Claude & Mary Lou Stocky  
Ms. Susanne Stone  
Patricia B. Stuart  
David & Georgia Tetrault  
Meredith Thrower  
Daniel & Charlene Vallandingham  
Martha Vannoy  
Mr. & Mrs. Thomas H. Walker, Jr.  
George Watkins  
Therese Weldon  
Jennifer Wells  
Kelly West  
Karen Whelan  
Mrs. Hugh O. Wrenn  
Ann Wynne

#### **Company (\$50 - \$99)**

Diane M. Abato  
Rick & Liz Albee  
Anonymous  
Elly Bacigalupo  
Colleen Bahr  
Susan Boisseau  
Angela P. Bowers  
Christine Clarke  
Jeff & Tracy Google  
Anne C. & Maurice W. Dickerson  
Susan Dorsey  
Ruth Doumlele  
Thomas Eichler MD  
William J. Ernst III  
Debbie Fleming  
Annemarie Fontaine  
Dwight & Debby Frazier  
Dorothy Garcia  
Tim Gaudette  
Gail L. Gilligan  
William Grogan  
Ralph & Jackie Harman  
Sandra Harris  
C. Michael Hawn  
Sheldon & Rose Herold  
George L. Hiller  
Wendell Howard  
Patricia Howe  
Mr. & Mrs. E. R. Hutchinson, Jr.  
Sallie Kirchoff  
Carolyn Koelmel  
Mark Lerman  
Michelle McGregor  
Anne McLaughlin  
James Mercante  
Jennifer Montgomery  
Mr. William L. Motley, Jr.  
Gloria Myers  
Catherine Palmore  
Leslie Pankey  
Margaret Perkinson  
Christine Petri

Donald Piper  
Ms. Beth Pruitt  
Rose Reif  
Sharon K. Robertson  
Mr. & Mrs. Steven Saltzberg  
Carole SantaMaria  
Cornelia Serota  
Mr. & Mrs. Sheldon Shapiro  
Lois Sisk  
Lisa-Margaret Steven Bryan  
Mr. & Mrs. Richard E. Strauss  
Rob & Marla Stuebner  
Barbie Such  
Anne Sutton & Raymond Johnson  
Richard & Paula Troxel  
Bettie Vaughan  
Naomi Weathers  
Kristen Welsh  
Mr. & Mrs. W. Reed West III  
Harold & Suzanne Williams  
Robert Wodarczyk  
Berry Wright, Jr.  
Dr. Danielle Wroblewski  
Arlene Yarcich  
Brendan Yerian

## **INSTITUTIONAL CONTRIBUTORS**

---

#### **Cornerstones (\$50,000+)**

Altria Group  
E. Rhodes & Leona B. Carpenter  
Foundation  
National Endowment for the Arts  
The Shubert Foundation  
Virginia Commission for the Arts  
Lettie Pate Whitehead Foundation

#### **Angels (\$25,000 - \$49,999)**

Atlantic Union Bank  
The Cameron Foundation  
CultureWorks & the Arts and  
Cultural Funding Consortium  
Overton & Katherine Dennis Fund  
Dominion Energy  
Moses D. Nunnally, Jr.  
Charitable Trust B  
SisterFund

#### **Producers (\$15,000 - \$24,999)**

Roy E. Burgess II\* Fund of the  
Community Foundation for a  
greater Richmond  
CarMax Foundation  
The Community Foundation for a  
greater Richmond  
Cecil R. & Edna S. Hopkins Family  
Foundation  
R.E.B. Foundation  
George J. & Effie L. Seay  
Foundation  
TowneBank

#### **Directors (\$10,000-\$14,999)**

Arenstein Foundation  
Community Foundation for a  
Greater Atlanta  
Lewis & Butler Foundation  
Peachtree House Foundation

#### **Stars (\$5,000-\$9,999)**

Anonymous  
Ruth Camp Campbell Foundation  
circle S studio  
Covington Travel  
Greater Lynchburg Community  
Foundation  
PGA Tour Charities  
Richard S. Reynolds Foundation  
The Universal Leaf Foundation

#### **Stage Managers (\$2,500-\$4,999)**

Estes Foundation  
Kjellstrom + Lee Inc.  
Lewis Insurance Associates  
NewMarket Corporation

#### **Community Builders (\$1,000-\$2,499)**

Deloitte  
Ernst & Young  
Fife Family Foundation  
Glave & Holmes Architecture  
King & Spalding LLP  
Nathalie L. Klaus Charitable Trust  
Primis Bank  
RSM US  
Kathryn & W. Harry Schwarzschild  
Fund  
South State Bank  
Estate of Randy Strawderman

#### **Co-Stars (\$500-\$999)**

Kingsbery W. & Carla C. Gay  
Family Fund of the Community  
Foundation for a greater  
Richmond  
Loucks Family Foundation  
The M Companies LLC  
The Micawber Foundation Inc.

#### **Ensemble (\$250-\$499)**

Kroger  
Network for Good

#### **Curtain Raisers (\$100-\$249)**

AmazonSmile Foundation  
Virginia A. Arnold\* Endowment  
Fund  
Google Inc.  
The Hartford

## IN HONOR & MEMORIAM

---

Sally Bagley *in honor of George & Cal Jennison*  
Vickie Browne *in memory of Hazel Moore & Alice Tyler*  
J.P. Causey, Jr. *in memory of Charlotte McCutcheon*  
Rebecca Chandler *in honor of Laura Lee Chandler*  
Becky Clarke *in memory of Tim Cates*  
James & Amy Jane Cohen *in memory of Elizabeth Lillian Dante Cohen Pope*  
Catherine Cooper *in memory of Dr. James H. Butler*  
Mrs. Jamme Coy *in memory of Stephen C. Coy*  
Blair Curdts *in honor of Suzanne Pollard & Scott Wichmann*  
Larry & Mary Kathryn Eck *in memory of Roy E. Burgess II*  
Gonzalee Ford *in honor of her Barksdale Friends*  
Lisa Freeman *in honor of Phil Whiteway*  
Ms. Carrie T. Galeski *in memory of Charlotte McCutcheon*  
Ralph & Jackie Harman *in memory of Thomas Wyeth Harman*  
Shep & Cynthia Haw *in honor of Cal & George Jennison*

Rev. & Mrs. Charles Hunt *in memory of Walt Sherman*  
Jacqueline Goldberg Jones *in memory of Louis Di Lalla*  
Stan & Barbara Joynes *in honor of Bruce & Janet Kay*  
Pete Low *in memory of Neil & Sara Belle November*  
Shawn & Dee Majette *in honor of Libby Majette*  
Lee & Peggy Martin *in memory of John & Florence Walters*  
Mr. & Mrs. C. Glenn Miller *in memory of Curtis & Amy Miller*  
Sandi Nogi *in memory of Dr. Jay Nogi*  
Sarah K. Parrish *in honor of Alice Flowers*  
Carolyn Paulette *in honor of George & Cal Jennison*  
Suzanne Pollard *in honor of Bruce Miller & Phil Whiteway*  
Robert Dean Pope *in memory of Elizabeth C. Pope*  
Mrs. Jeanette Welsh *in memory of Elizabeth Lillian Dante Cohen Pope*  
Roger & Sandra Whiteway *in honor of Phil Whiteway*  
Suzanne P. Wiltshire *in memory of Charles F. Wiltshire*

## IN-KIND CONTRIBUTIONS

---

Gini Blostein-Wolf  
Laura Lee Chandler  
Joe Doran  
Jayne Flowers  
John Frawner  
Gail Ridgeway  
Roger Whiteway

## MATCHING GIFTS

---

Altria Client Services  
Dominion Energy  
Google Inc.  
The Hartford

## GIVING

Like most professional nonprofit performing arts organizations, Virginia Rep relies on the generosity of our donors for over one-third of our annual operating revenue. Since our founding 69 years ago, donor support each season allows us to produce high-quality theatre productions for Virginia audiences of all ages, while addressing critical community needs through the power of the performing arts.

See how donations are used, and please consider giving at [virginiarep.org/donate.html](http://virginiarep.org/donate.html) or scan this QR code with your phone ►



If you would like more information, contact Emily Cole-Jones, Director of Development, at 804-783-1688, ext. 1238 or [ecole-jones@virginiarep.org](mailto:ecole-jones@virginiarep.org).

'A transformative act of theatrical magic!' - VARIETY

# AN ILIAD

By Lisa Peterson & Denis O'Hare

**March 24th - April 16th, 2022**

Libby S. Gottwald Playhouse at the  
Dominion Energy Center

**QUILL THEATRE**



*Classical Theatre for the Current World*



RICHMOND BALLET



**STUDIO ONE**

SEPTEMBER 14 - 23, 2021

**STUDIO TWO**

OCTOBER 26 - 31, 2021

**THE NUTCRACKER**

DECEMBER 11 - 23, 2021

**ROMEO & JULIET**

FEBRUARY 18 - 20, 2022

**STUDIO THREE**

MARCH 22 - 27, 2022

**STUDIO FOUR**

MAY 10 - 15, 2022

[richmondballet.com](http://richmondballet.com)



The E. Rhodes and Leona B. Carpenter Foundation

THIS SUMMER  
NOVEMBER THEATRE

# MAMMIMA MIA!

**JUNE 24 - AUGUST 7**

November Theatre *Downtown*

Exploding with the harmonic hit songs made famous by the popular 1970s group ABBA, this intoxicating musical will have you singing and dancing in the aisles.

THIS YEAR'S  
GALA IS IN JUNE!



*Celebrate the journey with  
Virginia Repertory Theatre*

THE 10TH ANNUAL  
**ANYTHING GOES**  
*Gala*

Join us on our Greek Island

The Jefferson Hotel

June 11, 2022

6:00 pm

TICKETS AT [VIRGINIAREP.ORG](http://VIRGINIAREP.ORG) OR 804-282-2620