

NOVEMBER THEATRE
ARENSTEIN STAGE

VIRGINIA
rep

It's a 
Wonderful
Life A LIVE
RADIO
PLAY

Adapted by Joe Landry



HANOVER
REOPENS!!

VIRGINIA
rep

NEIL SIMON'S

Barefoot IN THE Park

DECEMBER 10 - JANUARY 9 Hanover Tavern

FOR THE KIDS

Virtual Santa Visits

Zoom with Santa! NOV 29 - DEC 24

RESERVATIONS

Santa's
Enchanted Workshop



THIS JANUARY
CADENCE THEATRE

VIRGINIA
rep

CADENCE
THEATRE COMPANY

EVERYBODY



BY **BRANDEN JACOBS-JENKINS**
2018 Pulitzer Prize for Drama Finalist

JANUARY 13-30, 2022 Theatre Gym

TICKETS AND SUBSCRIPTIONS AT VIRGINIAREP.ORG OR 804-282-2620

Co-Artistic Director - Community Desirée Roots
Managing Director Phil Whiteway



IT'S A WONDERFUL LIFE: A LIVE RADIO PLAY

Adapted by **Joe Landry**

"It's a Wonderful Life" is based on the story,
"The Greatest Gift" by Phillip Van Doren Stern
from the screenplay by Frances Goodrich,
Albert Hackett, Frank Capra, and Jo Swerling

Produced by special arrangement with Playscripts, Inc.
(www.playscripts.com)

SCENIC DESIGN
Mercedes Schaum

COSTUME DESIGN
Sue Griffin

LIGHTING DESIGN
BJ Wilkinson

SOUND DESIGN
Jacob Mishler

STAGE MANAGEMENT
Justin Janke*

DIRECTION
Chelsea Burke

SHOW SPONSOR:



SEASON SUPPORT:



E. Rhodes and Leona B.
Carpenter Foundation

NATIONAL
ENDOWMENT for the ARTS



SARA BELLE AND NEIL NOVEMBER THEATRE / MARJORIE ARENSTEIN STAGE

CAST

Jake Laurents	Kurt Benjamin Smith*
Sally Applewhite	Anna da Costa*
Lana Sherwood	Maggie Bavalack
Harry Heywood	Joshua Mullins
Freddie Filmore	William Anderson
Oliver Johnston	Bo Wilson*
Cover	Nora Ogunleye
Cover	Alvan Bolling II

FOR THIS PRODUCTION

Assistant Director	Nora Ogunleye
Assistant Stage Manager	Courtney Holmes
COVID Safety Manager	Lydia Hundley
Voice and Dialect Coach	Karen Kopryanski
Deck Crew	Jason Winebarger
Wardrobe Supervisor	Sheridan Parkinson
Wig Designer	Kevin S. Foster
Audio Engineer	Jacob Mishler
Light Board Operator	Griffin Hardy
House Managers	Joel Kimling, Aubrey Mitten
Photographer	Aaron Suttten
Videographer	Austin Lewis

The video or audio recording of this performance by any means is strictly prohibited.



**Member of Actors' Equity Association, the union of professional actors and stage managers in the U.S.A.*

TIME AND PLACE

The stage and auditorium of Studio A at WBFR in Manhattan, New York. Christmas Eve, 1946.

There will be no intermission.

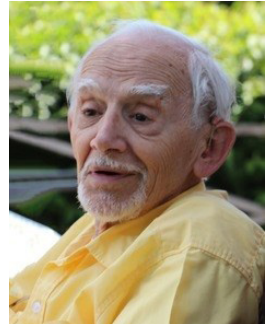
SPECIAL THANKS

SPARC, Tom Width and Swift Creek Mill Theatre

DEDICATION

Lou DiLalla

With great respect and affection, we dedicate this production to the memory of Lou DiLalla. In an era when we cherished our forebears, three men emerged as grandfatherly figures for the three buildings we grew to call home. Tom Bass at Hanover Tavern, Tom McGranahan at Willow lawn, and Lou DiLalla at our historic November (Empire) Theatre. Like trusty, hand-forged keys, our two Toms more or less came with the buildings. Lou simply showed up at the same time we purchased the Empire. Here he played the crusty Captain in *Mister Roberts* (Lou himself was a Navy veteran of World War II), Herr Schultz in *Cabaret*, and Uncle Henry in multiple productions of *The Wizard of Oz*.



Our three grandpas were talented, to be sure. But to an even greater extent, they were steadfast, relentlessly kind, and irreplaceable. We lost Lou during the dark days of COVID. Even with our stages silent, we heard his bell ring.



YOUR LOCAL COFFEEHOUSE

.....

Coffee
Espresso

.....

Breakfast
Lunch

.....

Desserts
Cocktails

.....

liftcoffeeshop.com

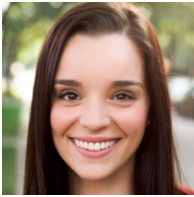
ONLY 1.5 BLOCKS WEST OF THE THEATER. **218 W. BROAD STREET**

COMPANY BIOS



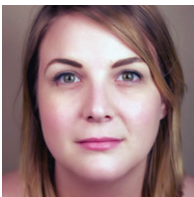
Kurt Benjamin Smith, he/him. (Jake Laurents) Kurt is excited to be back in Richmond working with such a talented cast and crew. Memorable credits include plays with Obie Award winners, Drama Desk Award winners, Pulitzer Finalists, and a lead role in an Emmy award winning TV series.

He has been seen in Richmond as Jay Gatsby in *The Great Gatsby*, Bottom in *The Bottom Show*, and as Sir Andrew in *Twelfth Night*. Kurt couldn't be more happy to conclude his debut season in Richmond as George Bailey. He lives in Williamsburg portraying Thomas Jefferson. Much love to mom and dad. Michelle, with Everything.



Anna da Costa, she/her. (Sally Applewhite) Anna is thrilled to be making her Virginia Rep debut! Originally from Michigan, Anna holds her B.F.A. in Musical Theatre from Coastal Carolina University. She spent the last few years calling Central Florida home, where she could be seen performing at

Walt Disney World and Universal Orlando Resort in Entertainment. She would like to dedicate this show to those who can't make it home for the holidays. Much love to her family, friends, and husband Artur for their constant support. annadacosta.net



Maggie Bavalock (Lana Sherwood) is so happy to spend the holidays on stage! Some of her favorite credits include Marie Antoinette in *The Revolutionists* (RTCC Best Actress in a Supporting Role - Play award, The Conciliation Lab), Gremio in *Taming of the Shrew* (Quill Theatre), Chick Boyle

in *Crimes of the Heart* (Virginia Rep), Kleonike in *Lysistrata* (RTCC Best Supporting Actress - Play nominee, Quill Theatre) and Liza in *Riding the Bull* (RTCC Best Actress in a Leading Role - Play award, The Conciliation Lab). When not on stage, you can find her crafting the best Instagram selfies in RVA (@maggersyeah).

COMPANY BIOS



Joshua Mullins (Harry Heywood) is a graduate of Radford University where he obtained a B.A. in Theatre. Notable works include Juliet, et al. in *The Complete Works of William Shakespeare [abridged]* (Quill Theatre); Mole, et al. in *Thumbelina*, Jacob in *Hugs and Kisses* (Virginia Rep On Tour); and Jan in *The Unexpected Guest* (Chamberlayne Actors Theatre). He also teaches Theatre III for Henrico County's Center for the Arts and seasonal lessons with the local children's theatre company CharacterWorks. He would like to thank all of his friends and family for their undying love and support.



William Anderson (Freddie Filmore) is originally from Bowling Green, KY and is now a Richmond-based teacher/singer/actor/director. He is blessed to be on the stage again. He attended Western Kentucky University and The University of Kentucky where he received a B.M. in Vocal Performance. Favorite shows at Riverside Center include *Grumpy Old Men the Musical* (Chuck Barrels), *The Color Purple* (Preacher/Ole Mister), and Disney's *Beauty and the Beast* (Monsieur D'Arque). For Virginia Rep, he was in *The Wiz* (Gatekeeper), *Akeelah and the Bee* (Dr. Larabee), *The Color Purple* (ensemble)(RTCC Best Musical award), *South Pacific* (Henry); for TheatreLAB, *Sweeney Todd* (Judge Turpin)(RTCC Best Musical award); for Cadence/Virginia Rep, *Caroline or Change* (Dryer/Bus)(RTCC Best Musical award); and for 5th Wall, *The Toxic Avenger* (Black Dude)(RTCC Best Supporting Actor in a Musical nominee). Sending much love to each and every one of you for your support.



Bo Wilson (Oliver Johnston) studied at the National Theatre Institute and at Virginia Tech. Notable local roles include Friar Lawrence for Richmond Shakespeare Festival's *Romeo and Juliet*, Uncle John in *The Grapes of Wrath*, Beaudricourt in *The Lark*, and Lindy in *Melissa Arctic* (all for Virginia Rep,) and Williamson in *Glengarry Glen Ross* for the Firehouse. Bo is also a professional voice talent, having done several hundred radio and TV spots, as well as the *Fallout*

COMPANY BIOS

video game series. He's also a playwright, with five titles published (including the "Charitable Sisterhood" plays which premiered right here at Virginia Rep.) He's thrilled to be part of one of his favorite Christmas stories.



Nora Ogunleye, she/her. (Understudy, Assistant Director) Nora is ecstatic to make her debut here at Virginia Repertory Theatre! After interning in the Virginia Rep tour office from 2016-2017, Nora then went on to perform both locally and nationally with Virginia Rep On Tour for two amazing years. Nora would like to thank her friends and family, especially Chelsea Burke who has always offered her a seat at the table. She would also like to thank the amazing designers and production team whose hard work and dedication have shone throughout this process. Enjoy the show!



Alvan Bolling II (Understudy) graduated in Spring 2021 from Virginia Commonwealth University with his B.A. in Theatre Performance. Along with acting on the stage, Alvan is also a voice actor who can regularly be heard playing various roles on the SCP Archives podcast, as well as his own Horror podcast that he produces and edits himself, *The Ghost Light Theater*, which can be found anywhere podcasts are heard! He has also performed on stages across Virginia, in productions such as: *Monty Python's Spamalot* as Sir Galahad (Little Theatre of VA Beach), *Jekyll & Hyde* as Gabriel John Utterson (Williamsburg Players), *The Mystery of Edwin Drood* as Throttle/Ensemble (Swift Creek Mill Theatre), and the touring company of *Buffalo Soldier* (Virginia Rep). Most recently, Alvan appeared part of the Ensemble for *War in Pieces* at Firehouse Theatre; he will be returning to that same stage in the premiere musical, *Gabriel*, opening at the end of January! Lastly, he wishes to send Love to his parents, best friends, dog, and especially those currently struggling through any kind of personal hardship – I sincerely hope this performance will provide a few hours of needed escape. alvanthe2nd.com

COMPANY BIOS

Chelsea Burke (Director) is a theatre artist originally from Cleveland, Ohio. Favorite directing credits include: *The Revolutionists* (RTCC Best Play nominee), Grand Concourse (RTCC Best Play and Best Director of a Play awards), *Level 4* (World Premiere), *The Last Five Years*, *When Last We Flew* (TheatreLAB); *Molly House* (World Premiere), *Girlfriend*, *Hand Grenades* (Richmond Triangle Players); *The Taming of the Shrew* (RTCC Best Direction nominee, Quill Theatre); *I and You* (Theatre VCU); *Dido and Aeneas* (Capital Opera Richmond); *The Verge* (World Premiere, Firehouse Theatre); *The Curious Incident of the Dog in the Night-Time* (Associate Direction, Virginia Rep); and *In Love and Warcraft* (Assistant Direction, Kennedy Center MFA Workshop). Chelsea is currently co-directing her first feature-length movie, *Shanidar*, to be released next year. Love and gratitude to the cast and crew, Steve & Ruth, the pups, and mom for being her angels; you all deserve your wings!

Karen Kopryanski (Voice and Dialect Coach) is the Head of Voice & Speech at TheatreVCU. She has coached more than 50 professional and collegiate productions on the East Coast, including *The 39 Steps*, *A Gentleman's Guide to Love and Murder*, and *River Ditty* (all for Virginia Rep), *Milk Like Sugar* (Huntington Theatre), *Cabaret* (American Repertory Theatre), and *The Sugar Syndrome* (Williamstown Theatre festival). In Virginia, she has been seen onstage as Carol in *Anne Page Hates Fun* (American Shakespeare Center) and Soccer Mom in *The Wolves* (Cadence/TheatreVCU). She received her MFA from the ART/MXAT Institute at Harvard University, and is a member of Actor's Equity Association and an Associate Teacher of Fitzmaurice Voicework.

Mercedes Schaum (Scenic Design) is thrilled to be back designing for Virginia Rep and working on her first show since the start of the pandemic. She's been designing and painting in Richmond for 20 years. Her credits include *Annie*, *Honk!*, *A Christmas Story*, *Mame*, *The BFG*, *Song of Mulan*, *Into the Woods*, *Hay Fever*, *The Drawer Boy*, *The Magic Flute* and so many more for Virginia Rep. *The Marriage of Figaro*, *The Magic Flute*, *The Merry Widow* and others for VCU Opera. Most recently *Peter and The Starcatcher* and *Little Shop of Horrors* for SPARC, *Times Square Angel* for Richmond Triangle players, and *Daddy Long Legs* for Swift Creek

COMPANY BIOS

Mill Theatre She has a B.F.A. from JMU in theatre and an M.F.A. in set design from University of Illinois. When she's not working in the theatre, Mercedes is raising four kids, helping design restaurants with her husband, Jason Alley, and looking for new challenges.

Sue Griffin (Costume Design) has headed up the Virginia Rep costume department for the last eighteen years. Over this time, the shop has produced costumes for more than 300 shows, from traveling fairy tales to major musicals. With the help of the full time shop, hundreds of costumes, wigs, shoes and hats are sent out on a stage or packed up on tour. Some of the most memorable shows include *1776*, *Dirty Rotten Scoundrels*, *The Color Purple*, *The Curious Incident of the Dog in the Night-Time*, and *A Gentleman's Guide to Love and Murder*.

Kevin S. Foster (Wig Design) is excited to be making his wig design debut at Virginia Rep. His regional design credits include *I Hate Hamlet* at The Maltz Jupiter Theatre; Rodger and Hammerstein's *Cinderella* at The Fulton Theatre; *Shrek Jr.* and *Jersey Boys* at Maine State Music Theatre; *Cindy Reilly* and *Pippi Longstockings* at The Peterborough Players; *Our Town* at Virginia Stage Company; *Biloxi Blues*, *Hello Dolly!*, and *9to5* at The Fort Lee Theatre Company. Other design credits include *Pippin*, *The Wolves*, *Balm in Gilead*, *As You Like It*, *The Foreigner*, *Angels in America Part 1*, *The Importance of Being Earnest*, *Fun Home*, *Nosferatu*, and *Glengarry Glen Ross* at Virginia Tech. Instagram and TikTok: @wigsbykevin. www.kevinsfosterii.com

BJ Wilkinson (Lighting Design) received his B.A. from the University of Northern Colorado, and his MFA from the University of Cincinnati - College Conservatory of Music. He serves as Resident Lighting Designer and Master Electrician for Virginia Repertory Theatre where his recent designs include *Atlantis*, *Sister Act*, *The Curious Incident of the Dog in the Night-Time*, *West Side Story*, *Erma Bombeck: At Wit's End*, *Miracle on South Division Street*, *Mary Poppins*, *Shakespeare in Love*, *Da*, *The End of War*, *Dancing Lessons*, *1776*, *Summer and Smoke*, *Croaker*, *Peter and the Starcatcher*, *Whipping Man*, and *Equivocation*. Recent designs

COMPANY BIOS

for Quill Theatre include *Twelfth Night*, *Merchant of Venice*, *King Lear*, *Hamlet*, *Sam & Carol*, *Richard III*, *A Midsummer Night's Dream*, *Comedy of Errors*, *Othello*, *The Tempest*, and *Macbeth*. He would like to thank Samm, Molly and Jameson.

Jacob Mishler (Sound Design) is thrilled to join this incredible team of storytellers. Jacob has been involved in live production for 25 years, moving into theatrical sound design in 2004. His work has been heard all over the country, earning him several Broadway World awards and a Henry award. He is very happy to have recently taken the full time position of Audio Visual Supervisor at Virginia Rep. Selected favorites: *Cabaret* (Dutch Apple), *Woman in Black* (Fulton Theatre), *The Curious Incident of the Dog in the Night-Time* (Fine Arts Center). Love to Julie. Welcome back to live theatre!

Justin Janke (Stage Manager) is thrilled to be spending this holiday season in the November Theatre with the cast and crew of *It's a Wonderful Life: A Live Radio Play*. Justin is a 2018 graduate of Virginia Commonwealth University. He has stage managed many of Virginia Rep's productions over the past five years throughout all of our venues, including the recent production of *Pipeline*. He sends his love to his husband, dog, and family for always being a source of constant support. Happy holidays everyone.

Courtney Holmes (Assistant Stage Manager) is just a country girl living in a big city. Raised in Emporia, Virginia, she moved to the quiet county of Glen Allen, Virginia for middle and high school. During her time at Hermitage High, she was a member of the Center for Humanities and followed the arts in all forms from visual arts to playing the violin. After high school, she started to work full time at Capital One to fund her way through higher education in pursuit of a Medical Degree. She is currently studying at VCU to achieve her dreams of starting a small practice to help the under privileged who need medical assistance.

COMPANY BIOS

Joe Landry (Adaptation) Joe Landry's plays have been produced across the country and internationally, and include *It's a Wonderful Life: A Live Radio Play*, *Reefer Madness*, *Vintage Hitchcock: A Live Radio Play*, *Eve & Co.*, *Beautiful*, *Hollywood Babylon*, and *Numb*. Mr. Landry attended Playwright's Horizons/NYU, founded Second Guess Theatre Company in Connecticut and is a member of the Dramatists Guild of America. He is currently developing new projects for the stage and screen.

Playscripts, Inc. was formed in 1998 by playwrights Doug and Jonathan Rand as an independent theatrical agency to represent a great diversity of playwrights, composers and lyricists. Our commitment to representing artists through innovative channels with a specific focus on creating opportunities for audiences to connect with their great work has spanned two decades and has expanded into representing over 1000 of the live theatre industries most notable contributors.



RICHMOND BALLET

STUDIO ONE
SEPTEMBER 14 - 23, 2021

STUDIO TWO
OCTOBER 26 - 31, 2021

THE NUTCRACKER
DECEMBER 11 - 23, 2021

ROMEO & JULIET
FEBRUARY 18 - 20, 2022

STUDIO THREE
MARCH 22 - 27, 2022

STUDIO FOUR
MAY 10 - 15, 2022

richmondballet.com



The E. Rhodes and Leona B. Carpenter Foundation



LEADERSHIP



DESIRÉE ROOTS

Co-Artistic Director - Community

Desirée has showcased her triple threat talent for over 35 years as an active member of the Gospel, Jazz, and Theatre scenes regionally, nationally, internationally, and in Richmond, VA where she grew up. She started singing in church when she was four, and started her professional theatrical career

at age 13. Growing up in a musical family, it was only natural that she follow in her performing parents' footsteps.

Desirée has performed throughout the East Coast with orchestras, jazz ensembles, and as leader of her own ensembles. She's been the opening act for internationally renowned artists including Boney James, Brian McKnight, the late Phyllis Hyman, and B. B. King. She is a Grammy nominated recording artist and has produced shows she wrote including *Ella@100* in honor of the First Lady of Jazz, Ms. Ella Fitzgerald's 100th birthday. She received the Theresa Pollak award for "Vocal Excellence" in 2014.

Along with performing, Desirée has had a long standing career in the corporate and nonprofit sectors. Upon receiving her B.A. from Virginia Union University, she initially embarked on a teaching path. This quickly evolved into other opportunities such as a Programming Manager for Richmond Jazz Society, Inc., Booking Manager for Downtown Presents (now Venture Richmond), and client liaison for Drake Beam & Morin, a Fortune 500 corporation. She has also been an educator and music facilitator privately and within the Henrico and Richmond Public school systems for over 20 years.

Desirée began her association with Virginia Rep as a high school intern when the company was Theatre IV with the unique mission "to seek national-caliber excellence equally in four areas: the arts, education, children's health, and community leadership."

These four pillars of service are what drew her to become *Co-Artistic Director - Community* — "working with the theatre company I love to serve the community I love."

LEADERSHIP



PHIL WHITEWAY

Managing Director

Phil is a key leader in Virginia's nonprofit arts management community. He co-founded Theatre IV in 1975 as Virginia's first professional theatre for young audiences. In 2001, he assumed the role of Managing Director of Barksdale Theatre. In 2012, he provided staff leadership as Theatre IV and

Barksdale merged to form Virginia Rep, Central Virginia's flagship professional theatre. Under his management, Phil's companies have received the first *Excellence in Instruction Award* from the Virginia Board of Education, the *Dominion Shining Star Award* from Virginians for the Arts, and the *50 for 50 Arts Inspiration Award* from the Virginia Commission for the Arts.

Phil was a founding member of the boards of the Richmond Arts Consortium and the Broad Street Association. Under his staff leadership, Theatre IV purchased and renovated our historic November Theatre, receiving the *Community Builders Award* from the Central Richmond Association for its contribution to downtown revitalization. Phil is a graduate and past board member of Leadership Metro Richmond. He has served on the Governance Board of Partners in the Arts and as treasurer of Virginians for the Arts.

Phil has received the *Voice of the University Award* from his alma mater (University of Richmond), the *Theresa Pollak Lifetime Achievement Award* from *Richmond Magazine*, and the *Governor's Award for the Arts* from Tim Kaine. In 2000, Phil was included by *Style Weekly* among the "100 Most Influential Richmonders of the 20th Century."

Phil consults on arts management both locally and nationally. He is forever grateful for the love and support of his wife, Donna, and their four adult children—PJ, Jennings, Alex, and Gordon.

VIRGINIA REP STAFF

Co-Artistic Director - Community	Desirée Roots
Associate Artistic Director	Kikau Alvaro
Director of Production	Bruce Rennie
Technical Director	Thomas Hawfield
Lead Carpenter	Chris Foote
Carpenter	Joel Ernst
Carpenter	Andrew Huelskoetter
Carpenter	Liz Murphy
Custodial Services	Tim Bethea
Production Manager	Ginnie Willard
Lighting Supervisor/Resident Lighting Designer	BJ Wilkinson
Electrician	Joel Ernst
Audio Visual Supervisor/Resident Sound Designer	Jacob Mishler
Props Supervisor	Caroline Calhoun
Scenic Charge Artist	Amy Sullivan
Scenic Artist	Diane Zimmerman
Production Apprentice	Sam Shahinian
Director of Costumes	Sue Griffin
Cutter/Draper	Marcia Miller Hailey
Director of Tour Operations	Eric Williams
Tour Manager	Gordon Bass
Arts in Education Manager	Amber Martinez
Tour Apprentice	Jessica Jaffe
Managing Director	Phil Whiteway
Assoc. Managing Director	Tracy K. Coogle, CPA
Human Resources Manager	Lisa Kotula
Executive Assistant	Jessi Johnson Peterson
Education Manager	Irene Kuykendall
Education Associate	Daniel Daigle
Archive and Admin. Associate	Austen Weathersby
Director of Development	Emily Cole-Jones
Annual Fund & Grants Coordinator	Melissa Haber
Events	Belles and Whistles
Director of Communications	Liz Nance
Director of Group Sales	Mark Persinger
Web Manager	Jessica Printz Daugherty
Graphic Designer	Druanne Cummins
Marketing Associate	Kylee Márquez-Downie
Box Office Manager	Janine Serresseque
Assistant Box Office Manager	Shannon Frazier
Box Office Associates	Rye Brickey, Erin Dabrowski, Derek Gayle, Emily Stava, Gina Yolango
Founding Producer	Bruce Miller
Controller	Regina Rudolph, CPA
Accountant	Emily Bless
Accounting Associate	Sara Heifetz
External Auditor	Pilc & Moseley

OUR MISSION

Our Mission: To entertain, challenge and uplift our communities through the power of live theatre.

BOARD OF DIRECTORS

Laura Lee Chandler - *Chair*

William H. Carter - *Chair Elect*

Jeffrey M. Gallagher - *Immediate Past Chair*

Amanda Tornabene - *Corporate Secretary*

Jay Payne - *Treasurer*

Adrienne P. Whitaker - *IDEA Officer*

Brad Armstrong

Donald B. Garber

Meredith Miles

Brad H. Booker

Kyle R. Grinnage

Carolyn Paulette

Jason De La Cruz

Nancy M. Harrison

Damon W. Pearson

Donna T. Douglas

Martha Heeter

Martha Quinn

Mary Butler Eggleston

Bruce A. Kay

Christopher S. Reina, PhD

Cliff Fleet

Dirk D. Lasater

Gail C. Ridgeway

Trish Forman

Carmella Maurizi

Yogi H. Singh

VIRGINIA REPERTORY THEATRE ADVISORY COUNCIL

Ric Arenstein

Dr. Monroe E. Harris, Jr.

Carter M. Reid

J.P. Causey, Jr.

M. Addison Jones, Jr.

Dr. Terrie H. Scheckelhoff

Josée Covington

J. Theodore Linhart

Charlie Whitaker

Dr. Barbara Glenn

Dominic Madigan

Steven R. Williams

VIRGINIA REPERTORY THEATRE

114 West Broad Street; Richmond, VA 23220

Administration: 804-783-1688 Box Office: 804-282-2620

VIRGINIAREP.ORG



Virginia Repertory Theatre's Anti-Racism Commitment & Accountability Statement

Virginia Repertory Theatre aspires to become an artistic home that is multicultural in representation and where everyone is welcomed and included. We acknowledge that white supremacy and racism have permeated our national culture and are pervasive in our society. It is systemic. We stand against this and commit to doing our part to dismantle systems of oppression, not only in the theater community, but everywhere it is present.

As we look inward, we examine our own conscious and unconscious biases. We hold ourselves accountable for the ways in which our organization has caused harm to our artists and to the theater community. By not acknowledging this and the national reckoning, we caused further pain. Following the murders of George Floyd, Breonna Taylor, Ahmaud Arbery, and so many others, there has been a call for social justice. We at Virginia Repertory Theatre acknowledge this, we accept the call for social justice, and understand how and where we need to change as an organization as we move forward.

Our Commitment

We commit to examining our organizational culture to assure that we are an artistic home centered on anti-racist and anti-oppression practices. We will actively pursue and embrace inclusion, diversity, equity, and access in all aspects of art, business, and life in our community.

We will intentionally make space for the diverse voices of our board, staff, artists, and theatre community.

We will seek to include and reflect on the varied experiences of our community to ensure everyone has access to live theatre that entertains, inspires, and challenges. We will be mindful of Black, Indigenous, and Persons of Color (BIPOC); Asian American Pacific Islander (AAPI); People with Disabilities, Lesbian, Gay, Bisexual, Transgender, Queer+ (LGBTQ+), and other marginalized communities in our efforts and we will actively seek to learn from them.

We make these commitments to the theater community and to the community at large and we ask that they take this journey with us and hold us accountable.

We will commit to implement our action plan so that we can honestly say:

At Virginia Repertory Theatre, everyone has a voice.

At our theatre, everyone is welcomed and included.

LIVE ARTS

PIPELINE

BY DOMINIQUE MORISSEAU

JANUARY 14-30

DIRECTED BY DAVID VAUGHN STRAUGHN
SPONSORED BY ALLISON PARTNERS

434.977.4177 | livearts.org | 123 East Water Street, Charlottesville

DAS RHEINGOLD

Wagner | Sept 2021 at TOPGOLF

THREE DECEMBERS

Heggie | Jan/Feb 2022

LA BOHÈME:

RODOLFO REMEMBERS
Puccini | Nov 2021

THE MARRIAGE OF FIGARO

Mozart | Mar/Apr 2022

Virginia
Opera
vaopera.org

THANK YOU DONORS!

We thank the many individuals and institutional funders who have made charitable contributions in the past year. The following lists reflect contributions to our annual operating fund between December 1, 2020 through November 15, 2021. If you would like to join these supporters by donating to our nonprofit theatre, please visit www.virginiarep.org to **DONATE NOW** or mail your contribution check to Virginia Repertory Theatre, 114 West Broad Street, Richmond, VA 23220. Corrections to this list or questions about donating should be directed to Phil Whiteway (804) 783-1688 ext. 1116 or pwhiteway@virginiarep.org.

INDIVIDUAL CONTRIBUTORS

Angels (\$25,000+)

William & Josée Covington
Don & Betsy Garber
Pete Low

Producers (\$15,000 - \$24,999)

Mary Butler Eggleston
Tom & Brenda Eggleston
Gonzalee Ford
George & Cal Jennison
Mr. & Mrs. Joe Knox
Perry & Meredith Miles
Bill & Carolyn Paultette
Frances Booker Verschuure

Directors (\$10,000 - \$14,999)

Orran & Ellen Brown
Frances Lewis
Mr. & Mrs. Andrew Lewis
S.R. & Amy M. Williams

Stars (\$5,000 - \$9,999)

J. Read, Jr. & Janet Dennis Branch
Mr. & Mrs. James Carreras, Jr.
J.P. Causey, Jr.
Ted & Laura Lee Chandler
Mr. & Mrs. Thomas* Farrell
Margaret R. Freeman
Jeff Gallagher & Catherine Howard
Mr. & Mrs. Thomas F. Garner, Jr.
Dr. & Mrs. William V. Garner
Hugh & Nancy Harrison
Jim & Jane Hartough
Bruce & Terrie Powers Miller
Mrs. Margaret Pence
Paul & Nancy Springman
Bill & Sallie Thalhimier
Wil & Helen Zuelzer

Stage Managers (\$2,500 - \$4,999)

Jane Beaver
Dr. Mark Bladergroen &
Mrs. Carmella Maurizi
Dean & Jewel Caven
Ms. Carrie T. Galeski
Robert & Lynne L. Glasser
Stephen & Cheryl Goddard
Chris & Cheryl Guedri
Bruce & Janet Kay
Ken & Kathy Lemelin
Mr. & Mrs. Jeffrey Markunas
John & Karen Palen
Charles Reid
Barry & Gail Ridgeway

Larry Schwartz & Anne-Marie Irani
Alfred & Meredith Scott
Jim & Bobbie Ukrop
Phil & Donna Whiteway

Community Builders (\$1,000 - \$2,499)

Franco & Ruth Ambrogi
Rev. Vienna Cobb Anderson
Anonymous
Brad Armstrong & Frazier Millner
Robert B. Ball, Jr.
Mr. Richard L. Beadles
Roger & Anne Boeve
Brad & Jan Booker
Matthew & Heather Boyce
Dr. John B. H. Caldwell
Elizabeth (Lee) Camp
James & Amy Jane Cohen
Bill & Judi Crenshaw
Mary Ann Curtin
Carolyn A. Davis
Drs. Mark & Georgean DeBlois
M. Joe Doran
Donna T. Douglas
Cliff Fleet & Fran Zemmell
Aubrey Ford
Craig & Trish Forman
Jeff & Amanda Galanti
Paul Galanti
Thomas S. Gay
Vernon & Barbara Glenn
Anne R. Gray
Kyle Grinnage
Brian & Liz Haney
Catherine C. Harlow
Dr. & Mrs. Gary C. Harrington
Drs. Monroe E. Harris &
Jill Bussey Harris
Gloria Mae Hintz
Michael & Bevin Kehoe
James Klaus
Judith & Mary OBrien
Kathleen Patenaude
Patsy K. Pettus
Ed & Alice Rivas
Mr. & Mrs. Donald M. Robelen
Alison & Jody Rogish
Robert & Cindy Rolfe
David & Linda Rose
John & Barbara Rose
John Rupp
Larry & Matilda Shifflett
Ted & Pam Soto
Dennis Strawderman & Family
Richard & Ruth Szucs
Ms. Margaret R. Thomas

Anna F. Whiteway
John Whiteway
Vida C. Williams
Martha Quinn
Susan Quinn

Co-Stars (\$500 - \$999)

Joan Arenstein
Mabel Baldwin
Mr. & Mrs. Scott C. Barton
Page Bauder
Ben & Zoe Bunnell
Keith & Pamela Carney
Lynn L. Clayton
Rev Dr. E. Allen Coffey &
Dr. Deborah Waters
Bill Cooper
John & Susan Davenport
Philip & Kay Davidson
Mike & Maureen Donelan
Howard & Leigh Ann Feller
Steve & Julee Fletcher
Bill & Mary Garrison
Mr. & Mrs. Robert B. Giles
Joann H. Grayson
Patricia Hackler
Karen Halvorsen
Shep & Cynthia Haw
Ron Howard & Les Lewis
Robb Jones & Emily Cole-Jones
Claire C. Kaugars
Patrick Kelly
Philip W. Klaus, Jr.
Upton S. & Ann S. Martin III
Thomas & Nancy McCandlish
Read & Cathy McGehee
Arlene McLaren
Mr. & Mrs. C. Glenn Miller
Rick & Suzanne Morris
Perry Nelson
Douglas H. Pick
Martha Quinn
Bob & Jan Reynolds
Ronny & Barbara Robertson
Joe & Virginia Sandford
Rob & Tara Seward
Rick & Cindy Shearin
Dick & Sandi Shirey
Martha V. Singdahlsen
Barbara Starkweather
Griff & Cathy Surowka
Mandy & Billy Tornabene
Ivan Trittipoe
Mr. & Mrs. Robert J. Van Sickle
Mr. Edward Villanueva
Mrs. Jeanette Welsh
Roger C. & Sandra H. Wiley

*Deceased

Dr. Leanne Yanni
Buddy & Mary Lynn Young

Ensemble (\$250 - \$499)

Robert & Anne Adler
Anonymous
Ric & Rhona Arenstein
Mr. & Mrs. Frank B. Atkinson
Robert & Sandra Balster
Lisa Barker
William H. Bays
Ron Bell
Sarah Bettinger
John & Peggy Borgard
Dick & Julie Bradt
Liza Bruce
William Carter
Alan & Frona Colker
Rich & Fran Contreras
Donna Copley & Janet Inwood
David & Carolyn Crighton
Rebecca Chandler
Ralph & Druanne Cummins
Ed & Nancy Deane
Catherine DeLesDernier
Mr. & Mrs. William F. Dominick II
William Dunbar
Larry & Mary Kathryn Eck
Steven Farber & Ann Jewell
Mr. & Mrs. George* Flowers III
Ray & Sherrie Page Guyer
Laura Greer
Dave & Debi Haber
Elliott & Terrell Harrigan
Paige Harris
Michael & Susan Haubenstein
Sara Hillgrove
Harry & Katherine Hoke
Barry & Ann Kahan
Ms. Barbara Kincaid
Ron & Ann Klipp
Tyler Holt Ladner
Dirk Lasater
Justin M. Laughter
Paula Makielski
Steven & Marci Linas
Sandie Marstiller
Mr. Richard Martin
Tim & Squig Moore
Gerald Moreno
David Morgan
Ann Nichols-Casebolt
Ian A. & Rose Lane Nimmo
Mr. & Mrs. Kenneth G. Pankey
Jay & Casey Payne
Edson & Sharon Pederson
Kelly Pickerel
David & Anne Pierce
Alyson Plante
Mr. & Mrs. Robert Pugh, Jr.
Dr. Christopher Reina & Tell Carlson
Bruce & Toni Rennie
Robert & Lucinda Ritter
Mr. & Mrs. James E. Ryan, Jr.
Jay & Lynn Schwartz
Robin Skoog
Brooke & Susan Smith
Steve & Nancy Snyder
Meredith Thrower

Eugene & Lois Trani
Howard Twilley
Mr. John Walker
Shelly Walker
Mr. & Mrs. Thomas H. Walker, Jr.
Francis M. Watson III
Stephan & Mollie Watts
Mark Werner
PJ & Iliiyana Whiteway
Roger Whiteway
Richard & Nanette Whitt
Marshall & Stephanie Wishnack
Elizabeth Woods

Curtain Raisers (\$100 - \$249)

Judith T. Abruzese
Carl R. & Darlene Z. Ackerman
Anonymous
Bev Appleton
Connie Armstead
Sally Bagley
Ron Barnett
Gordon & Nancy Bass
David & Susan Beach
Jean T. Bear
Katherine Beard
Brenda Beck
Martin Beekman & Dorothy Tarleton
Mr. & Mrs. Anthony J. Bell, Jr.
Joe & Terry Bellamah
Steven & Claudia Biegler
Peter & Barbara Birch
Elizabeth Blair
Alice Theresa Bliss
Richard & June Bohrer
Ms. Eugenia H. Borum
Vic Bouril & Joanne Barreca
Charles & Helen Brewer
Anne Broadhead
Doris Brody
Rita Brooks
Stuart Broth
Dr. & Mrs. R. Lynn Browder
Robin Brewster
S. Kay Burnett
Mr. & Mrs. Brian L. Carr
Steve Chafin
Anne Chapman
Mr. & Mrs. Wes Clark
Becky Clarke
Christine Clarke
Andy Cleveland &
Janine Serresseque
Cynthia Coco
Bruce Cohen
Jeff & Tracy Coogle
Linda Cooke
Belinda Cox-Friday
Mr. David Crank
Robbie Crockett
Tom & Sheri Crowell
Mr. Ralph R. Crosby, Jr.
Gerald Cummings
Blair Curdts
Judith Cutting
Robbie Daniel
Betty Ann Dillon
Anne M. Dobson & Timothy S. Baird
Ronni Dreisback

Theresa Duffey
Dr. & Mrs. Michael Edelstein
William J. Ernst III
J. Mark Evans
Virginia Evans
Mary E. Farrell
Mrs. Robert & Marcella Fierro
Dawn Fiske
Gene Francke
Jack & Mary Frye
Richard Gehr
Celia Gehring
Sally Gerdes
Sherwin Ghaphery
Larry & Brenda Gilman
Margaret Goebel
Ralph & Jocelyne Graner
Katharine Gray
Chris Griffin
Bill & Kathy Groves
Julie Haber
Steve Haerbig
Mervyn Han & Rick Jones
Lynn Hartman & David Redinbaugh
Tom & Donna Hennessy
Bob & Jane Hilder
Genevieve Hildebrand
Mike & Karen Hojnowski
Guy & Marion Horsley
Harold & Deborah Houghton
Bethany Hover
Walter & Geraldine Howard
Charles & Nancy Hudson
Em & Kathy Hughes
Roger Hultgren
Stephan Humble
Jennifer Hundley
Rev. & Mrs. Charles Hunt
Mary Carter Hyman
Dave Johannas
Dr. Miles F. Johnson
Addison & Jessica Jones
Dennis & Judy Jones
Janice Jones
Stan & Barbara Joynes
Dr. & Mrs. W. Wayne Key, Jr.
Claire Kimberly
Dr. & Mrs. Barry V. Kirkpatrick
Dan & Beverly Kniffen
Judith E. Knode
Sid & Bev Koerin
Adam & Rachel Landsee
Mr. & Mrs. Robert H. Large
Denise Laussade
Georgi & Maya Lazarov
Steve & Sharon Lehman
Stephen Lessels
JoAnn Lindstrom-Gibbens
Morris & Jane Logan
Emily Love
Mr. & Mrs. A. John Lucas
Shawn & Dee Majette
Betty Ball Mann
Robin Mapes
Carol Martin
Lee & Peggy Martin
Tom & Donna McClish
Michael & Deanna McCullough
Connie McHale

Mr. & Mrs. C. Q. Meadows
Bruce & Margaret Mertens
Susan J. Meyers
Bennet Miles
Gail Miller
John F. Miller
Margaret Mohar
Wallace Moyer
Ronald Munro
Sue F. Munro
Steven Murden
Jonathan Murdoch-Kitt
Karen Nelson
Mr. & Mrs. William M. Noftzinger, Jr.
Sandi Nogi
Terry & Linda Oggel
Eddie & Brandi O'Leary
Ken & Karen Olshansky
Wilma Osmalov
Sharon Ott
Sandra Palkins
Arthur Palmer
Joseph Papa
Sarah K. Parrish
Marion Payne
Gwen Peters
Morrie & Carol Piersol
Dean & Elizabeth Pope
Laura Pretzman
Pamela Putney
Lindsay Ragheb
Ann Ramage
Ervin & Mary Ann Reid
Dr. & Mrs. Laurie E. Rennie
Bradley A. Riddlehoover
Mr. & Mrs. Gregory B. Robertson
Patricia Rollison
Patricia Rooney
Connie Rose
Diane Roth
Carole Royall
Carole SantaMaria
Anne Savedge
Josef Schuessler
Ms. Maura Scott
Mr. & Mrs. R. Strother Scott
Sandra Shaw
Dean & Valarie Shostak
Dan Siegel
Ms. Mary Jo Sisson-Vaughan
Ann Sledge
Jonathan & Kelly Stalls
Claude & Mary Lou Stocky
Jody Strickler
Patricia B. Stuart
Rob & Marla Stuebner
Melanie Swain
Ray & Janet Tarasovic
Rob & Mary Beth Tombes
Kristina Vadas
Daniel & Charlene Vallandingham
Bettie Vaughan
Kelly Waldrop
George Watkins
Melissa Weaver
Mary L. Webber
Nora Weinhold
Michael Weissberger
Therese Weldon

Jennifer Wells
Kelly West
Mr. & Mrs. W. Reed West III
Karen Whelan
Suzanne P. Wiltshire
Mary Ann Wilson
Joy Winstead
Mrs. Hugh O. Wrenn
Berry Wright, Jr.
Ann Wynne
Irene Aston Ziegler

Company (\$50 - \$99)

Diane M. Abato
Rick & Liz Albee
Anonymous
Dr. & Mrs. Ronald Artz
Elly Bacigalupo
Colleen Bahr
Chris & Georgianna Ball
Mary Ann Beatty
Leola Bedsol
Tanja Bishop
Susan Boisseau
Angela P. Bowers
Otis & Frances Brown
L. Stanley Brown
Karen Christian
Mrs. William R. Crews
Susan Dorsey
Ruth Doumlele
Harry Drucker
Kate Duval
James Dyk
Brian Edwards
Thomas Eichler MD
Phyllis A. Errico
Dolores Esser
Pam Farnham
Susan Finnegan
Debbie Fleming
Annemarie Fontaine
Dwight & Debby Frazier
Dorothy Garcia
Anita Garland
Tim Gaudette
Gail L. Gilligan
Ellen Gluckman
Carolyn Golladay
Vicky Hamrick
Hilda Hankins
Ralph & Jackie Harman
Sheldon & Rose Herold
George L. Hiller
Walter & Marsha Hitchcock
Wendell Howard
Patricia Howe
Mr. & Mrs. E. R. Hutchinson, Jr.
Cara Jennings
Jessie Jennison
Sallie Kirchoff
Carolyn Koelmel
Paul & Lisa Kotula
Mark Lerman
Katrinah Carol Lewis
Jay & Risa Levine
Hortense Liberti
Joan Losen
Janet Martino

Tara Matthews
Wes & Katie McElroy
Michelle McGregor
Anne McLaughlin
Anne Michie
William Mims
Terry Monroe
Jennifer Montgomery
Mr. William L. Motley, Jr.
Liz Nance
Wade Ogg
Catherine Palmore
Leslie Pankey
Margaret Perkinson
Christine Petri
Donald Piper
Sharon K. Robertson
Mr. & Mrs. Steven Saltzberg
Chuck & Mim Scalini
Cornelia Serota
Stuart & Barbara Simon
Lois Sisk
Frank Sisto
Mr. & Mrs. Richard E. Strauss
Barbie Such
Anne Sutton & Raymond Johnson
Joanne Terrell
Richard & Paula Troxel
Sandra Washington
Naomi Weathers
Lyndon & Mary Whitmore
Eric & Joy Williams
Louise Williams
Dr. Danielle Wroblewski
Harriet Yake
Arlene Yarlich

INSTITUTIONAL CONTRIBUTORS

Cornerstones (\$50,000+)

Altria Group
E. Rhodes & Leona B. Carpenter
Foundation
Lettie Pate Whitehead Foundation
The Shubert Foundation
Virginia Commission for the Arts

Angels (\$25,000 - \$49,999)

Atlantic Union Bank
The Cameron Foundation
CultureWorks & the Arts and
Cultural Funding Consortium
Overton & Katherine Dennis Fund
Dominion Energy
The Windsor Foundation Trust

Producers (\$15,000 - \$24,999)

Roy E. Burgess II* Fund of
the Community Foundation
for a greater Richmond
Cecil R. & Edna S. Hopkins Family
Foundation
The Community Foundation for a
greater Richmond
Nancy B. Booker Charitable Trust
R.E.B. Foundation
George J. & Effie L. Seay
Foundation

Directors (\$10,000–\$14,999)

Arenstein Foundation
 Lewis & Butler Foundation
 Community Foundation for a
 Greater Atlanta
 Estes Foundation
 Peachtree House Foundation
 TowneBank

Stars (\$5,000–\$9,999)

Anonymous
 CarMax, Inc.
 Covington Travel
 Greater Lynchburg Community
 Foundation
 Richard S. Reynolds Foundation
 Ruth Camp Campbell Foundation
 RPAC
 The Universal Leaf Foundation

Stage Managers (\$2,500–\$4,999)

Emerson Companies LLC
 GlaxoSmithKline
 Kjellstrom + Lee Inc.
 Lewis Insurance Associates
 NewMarket Corporation
 PGA Tour Charities

Community Builders

(\$1,000–\$2,499)
 Deloitte
 Ernst & Young
 Fife Family Foundation
 Glave & Holmes Architecture
 King & Spalding LLP
 Nathalie L. Klaus Charitable Trust
 RSM US
 Kathryn & W. Harry
 Schwarzschild Fund
 Estate of Randy Strawderman

Co-Stars (\$500–\$999)

Kingsbery W. & Carla C. Gay
 Family Fund of the Community
 Foundation for a greater
 Richmond
 Loucks Family Foundation
 The Micawber Foundation Inc.

Ensemble (\$250–\$499)

Google Inc.
 Hefty Wiley & Gore
 Kroger
 Network for Good

Curtain Raisers (\$100–\$249)

Virginia A. Arnold* Endowment
 Fund
 Bankers Insurance LLC
 Commonwealth Enterprises
 The Hartford
 MOSAIC Resturant
 Stephen & Susan Meyers Family
 Donor Advised Fund of Richmond
 Jewish Foundation
 Richmond Playwright Forum
 Wells Fargo

Company (\$50–\$99)

AmazonSmile Foundation
 Genworth Financial

IN HONOR & MEMORIAM

Donna Anderson *in memory of
 Audrey L. Errico*
 Sally Bagley *in honor of George &
 Cal Jennison*
 Lisa Barker *in memory of
 Audrey L. Errico*
 Vickie Browne *in memory of
 Hazel Moore & Alice Tyler*
 Rebecca Chandler *in honor of
 Laura Lee Chandler*
 Becky Clarke
in memory of Tim Cates
 James & Amy Jane Cohen
*in memory of Elizabeth Lillian
 Dante Cohen Pope*
 Catherine Cooper *in memory of
 Dr. James H. Butler*
 Blair Curdts *in honor of Suzanne
 Pollard & Scott Wichmann*
 Larry & Mary Kathryn Eck *in
 memory of Roy E. Burgess II*
 Phyllis Errico *in memory of
 Audrey L. Errico*
 Gonzalee Ford *in honor of her
 Barksdale Friends*
 Ralph & Jackie Harman *in memory
 of Thomas Wyeth Harman*
 Shep & Cynthia Haw *in honor of
 Cal & George Jennison*
 Hefty Wiley & Gore *in memory of
 Audrey L. Errico*
 Bob & Jane Hilder *in memory of
 Stephen C. Coy*
 Rev. & Mrs. Charles Hunt
in memory of Myra Branyon

Jacqueline Goldberg Jones
in memory of Louis Di Lalla
 Stan & Barbara Joynes
in honor of Bruce & Janet Kay
 Pete Low *in memory of Neil & Sara
 Belle November*
 Shawn & Dee Majette
in honor of Libby Majette
 Mr. & Mrs. C. Glenn Miller *in
 memory of Curtis & Amy Miller*
 Terry Monroe *in memory of
 Audrey L. Errico*
 Sandi Nogi *in memory of
 Dr. Jay Nogi*
 Sarah K. Parrish *in honor of
 Alice Flowers*
 David & Anne Pierce *in honor of
 Anthony Smith*
 Richmond Playwright Forum *in
 honor of Katrinah Carol Lewis &
 Steve Perigard*
 Patricia Rollison *in memory of
 Audrey L. Errico*
 Dan Siegel *in memory of
 Audrey L. Errico*
 Robert Steele *in memory of
 Audrey L. Errico*
 Howard Twilley *in memory of
 Evelyn Anne Twilley*
 Mrs. Jeanette Welsh *in memory
 of Elizabeth Lillian Dante
 Cohen Pope*
 Mr. & Mrs. W. Reed West III *in
 memory of Randy Stuart*
 Roger C. & Sandra H. Wiley
in memory of Audrey L. Errico

IN-KIND CONTRIBUTIONS

Deirdre Anderson
 Laura Lee Chandler
 Joe Doran
 Roger Whiteway

MATCHING GIFTS

Altria Client Services
 Bankers Insurance
 Dominion Energy
 Genworth Financial
 GlaxoSmithKline
 Google Inc.
 The Hartford
 Wells Fargo

*Deceased

GIVING

Like most professional nonprofit performing arts organizations, Virginia Rep relies on the generosity of our donors for over one-third of our annual operating revenue. Since our founding 65 years ago, donor support each season allows us to produce high-quality theatre productions for Virginia audiences of all ages, while addressing critical community needs through the power of the performing arts.

See how donations are used, and please consider giving at virginiarep.org/donate.html

If you would like more information, contact Phil Whiteway, Managing Director at 783-1688, ext. 1116 or pwhiteway@virginiarep.org.

**Atlantic Union Bank
is proud to sponsor
and support the arts.**

**Thanks Virginia Rep
for bringing great
theatre to RVA.**



AtlanticUnionBank.com

800.990.4828

Member FDIC



Valet in with us.

Dine with us.

Stroll.

Take your seat.

Bravo!

Nightcap.

Valet out with us.

**Tarrant's, Max's,
and Bar Solita
make theatre easy.**

